




Wingate House
Wingate Way
St Albans
AL1 5RE

 3 Bedrooms

 1 Bathroom

 1 Reception Room

 On-Street Parking

 EPC Band C

Council Tax
Band: C £1,915.66 (2024/2025)
Local Authority
St Albans City & District Council
Tenure: Leasehold, 125 years from 14th
August 1989
Ground Rent: £10 per annum
Service/Maintenance Charge: £720
per annum

Guide Price
£275,000 Leasehold

 **ashtons**
for life's great moves



Located within easy walking distance of the city centre and mainline station, this spacious three bedroom first floor apartment is offered to the market with no onward chain. This is a home ideal for anyone starting out or an investment purchase.

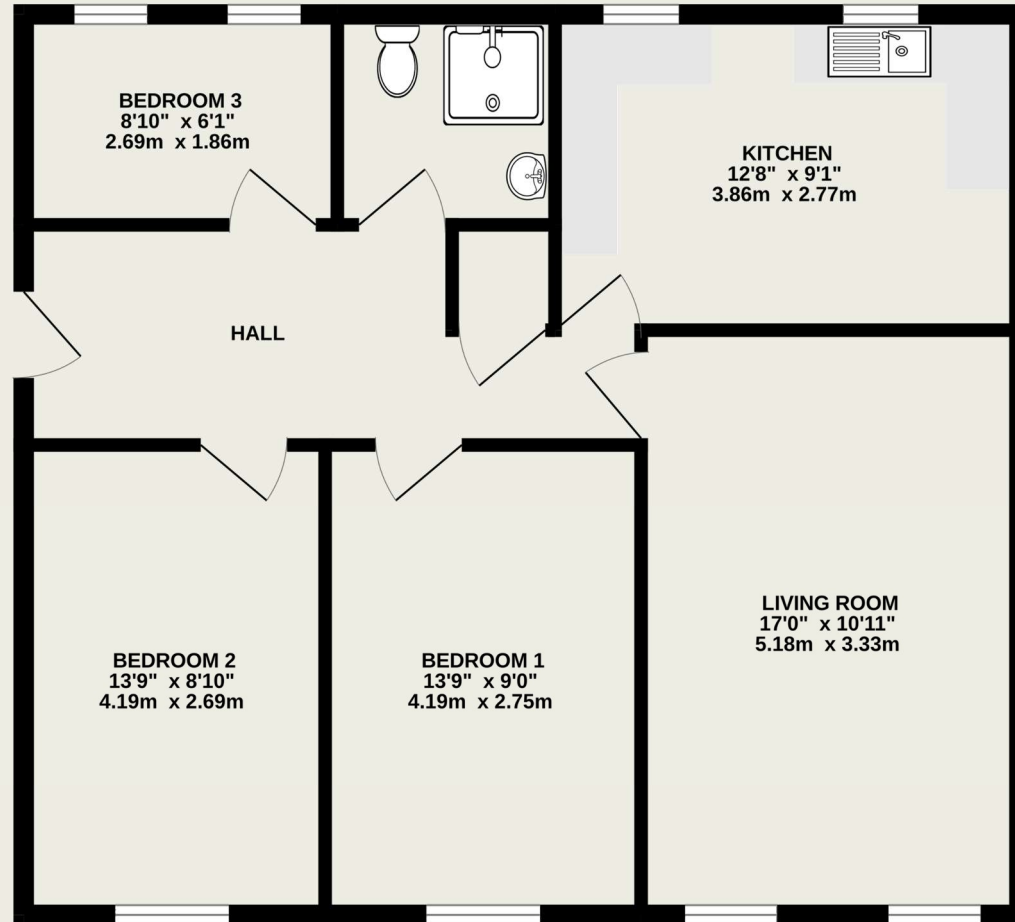
Description

This fine property offers flexible and spacious accommodation comprising a wide and bright hallway, three good size bedrooms, a spacious front aspect living room and well appointed kitchen.

All bedrooms are serviced by a stylish bathroom and there is a large storage cupboard.

Location

Wingate House is located to the east side of the city close to local shops and amenities and the mainline station is just a short distance away.



TOTAL FLOOR AREA: 741 sq.ft. (68.8 sq.m.) approx.

This floor plan is for illustrative purposes only. The measurement and position of each element is approximate and must be viewed as such

Important Information

These particulars do not constitute an offer or contract in whole or part. The statements contained herein are made without responsibility on the part of Ashtons or the vendors and they cannot be relied upon as representatives of fact. In respect of floor plans, these are for illustrative purposes only. The measurement and position of each element is approximate and must be viewed as such. Intending purchasers should therefore satisfy themselves by inspection or otherwise as to their correctness. The vendors do not make or give, and neither Ashtons nor any person in their employment has any authority to make or give, any representation or warranty whatsoever in relation to this property.

We offer a wide range of services through third-party providers including solicitors, surveyors, removal firms, mortgage providers and EPC suppliers. We receive additional payments for administering suppliers quoting software and making referrals. You are not under any obligation to use these services and it is your discretion whether you choose to deal with these parties or your own preferred supplier. You should be aware the average payment we received in 2021 equated to £48.36 per referral.