

MULBERRY MEADOWS

Castle Cary, Somerset BA7 7GG

2 bedroom homes with private gardens and allocated parking.

- Electric car charging points available
- Outdoor play area within the development

AVAILABLE TO RESERVE OFF PLAN



MULBERRY MEADOWS

Castle Cary, Somerset BA7 7GG

Stonewater proudly presents a collection of new two bedroom **homes for Shared Ownership** at Mulberry Meadows, Castle Cary.

Castle Cary is a picturesque country town 12 miles north east of Yeovil and 24 miles south of Bath. Our new community at Mulberry Meadows is located off Station Road, just a stone's throw from Castle Cary town centre.

Castle Cary boasts a bustling centre with a number of attractive, historic buildings, chain and independent shops, pubs, restaurants and cafes. An added bonus is that the town offers free parking throughout.

Other amenities close to Mulberry Meadows include doctors' and dentists' surgeries, an optician, a pharmacy, two popular primary schools and an academy for secondary school pupils.

Castle Cary is well connected to surrounding towns by road: Yeovil, Frome, Shepton Mallet and Trowbridge are all easily commutable being less than 30 minutes away by car. Castle Cary railway station is on the main London to Penzance line, with direct trains to Paddington Station taking one hour and 43 minutes travelling time.

- School 0.4 miles
- Convenience Store 0.1 mile
- Train station 1.6 miles
- Take Away & Restaurant 0.3 miles
- Cary Castle & District Museum 0.2 miles

SPECIFICATION

- Vinyl flooring to wet areas
- No carpet
- Oven, hob and extractor hood
- Porcelanosa tiles in bathroom
- Turfed rear gardens
- Turf & shrubs to front
- Allocated parking
- Allocated electronic vehicle charging point



SITE PLAN



PLOT 102

6 Cherry Court, Ansford, Castle Cary, Somerset BA7 7GL



2 bed semi-detached house

Parking for 2 cars
Turfed rear garden
Downstairs WC

£90,000 for a 40% share

Open Market Value: **£225,000**

Monthly Rent: **£309.38**

Service Charge: **£27.50**



Please note that all sales particulars and images are for marketing and illustrative purposes only. CGI's are representative of the house type and not necessarily the specified plot. Plans, computer generated images and photos may contain elements which are not present upon the final completion of the property. All room dimensions are approximate and are for general guidance only.

PLOT 103

8 Cherry Court, Ansford, Castle Cary, Somerset BA7 7GL



2 bed semi-detached house

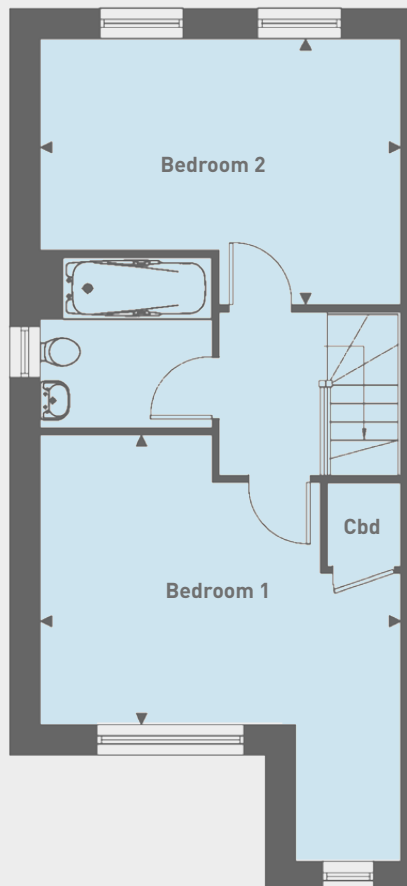
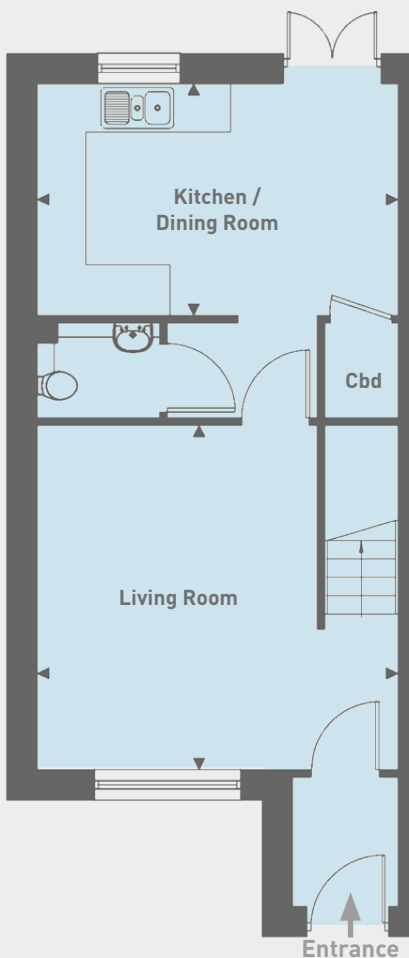
Parking for 2 cars
Turfed rear garden
Downstairs WC

£90,000 for a 40% share

Open Market Value: **£225,000**

Monthly Rent: **£309.38**

Service Charge: **£27.50**



Ground floor

Kitchen / Dining Room
4.44m x 2.85m (14'7" x 9'4")

Living Room
4.44m x 4.24m (14'7" x 13'11")

First floor

Bedroom 1
4.44m x 3.57m (14'7" x 11'9")

Bedroom 2
4.44m x 3.27m (14'7" x 10'9")

Please note that all sales particulars and images are for marketing and illustrative purposes only. CGI's are representative of the house type and not necessarily the specified plot. Plans, computer generated images and photos may contain elements which are not present upon the final completion of the property. All room dimensions are approximate and are for general guidance only.

PLOT 104

10 Cherry Court, Ansford, Castle Cary, Somerset BA7 7GL



2 bed semi-detached house

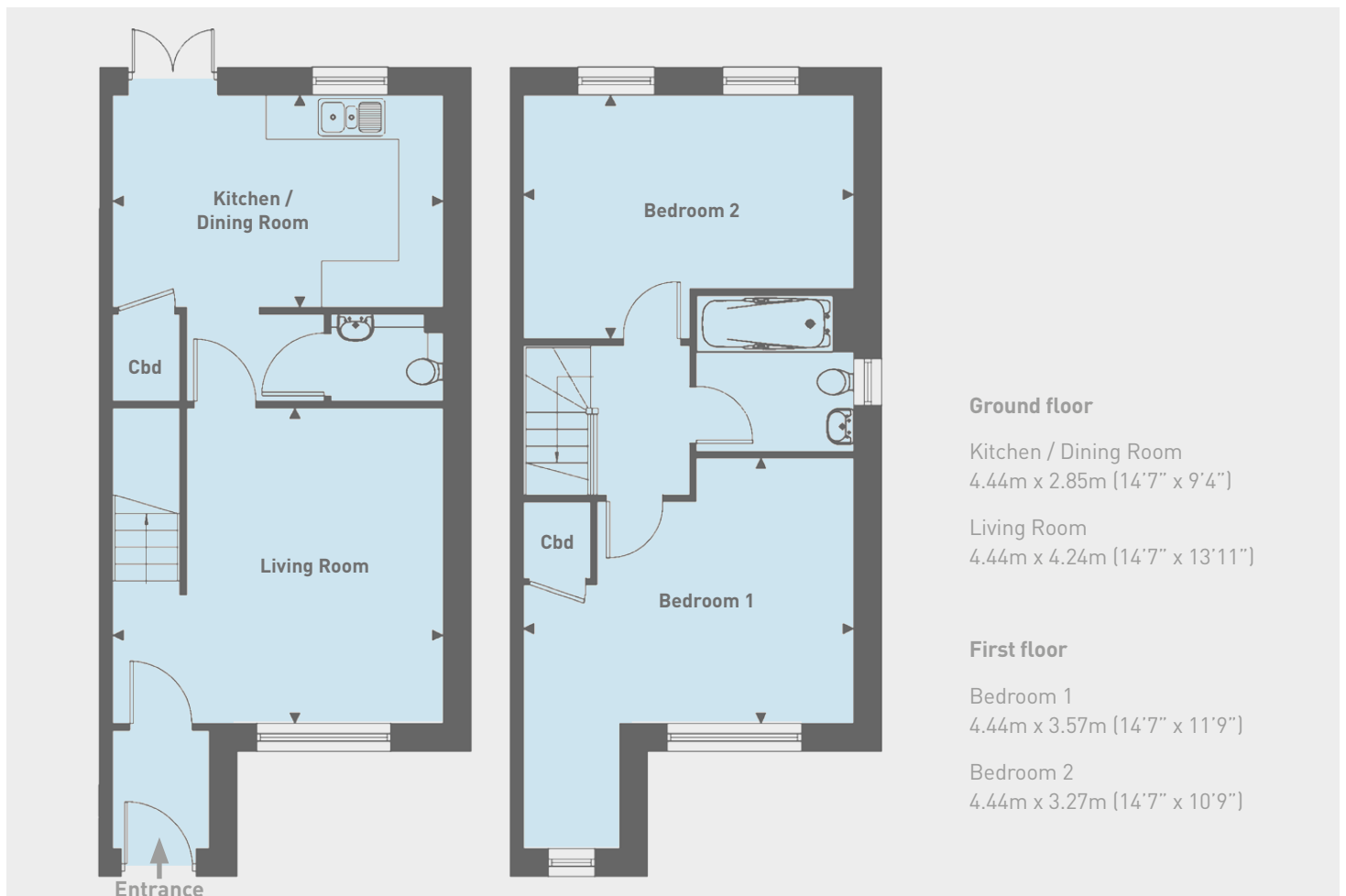
Parking for 2 cars
Turfed rear garden
Downstairs WC

£90,000 for a 40% share

Open Market Value: **£225,000**

Monthly Rent: **£309.38**

Service Charge: **£27.50**



Please note that all sales particulars and images are for marketing and illustrative purposes only. CGI's are representative of the house type and not necessarily the specified plot. Plans, computer generated images and photos may contain elements which are not present upon the final completion of the property. All room dimensions are approximate and are for general guidance only.

PLOT 105

12 Cherry Court, Ansford, Castle Cary, Somerset BA7 7GL



2 bed semi-detached house

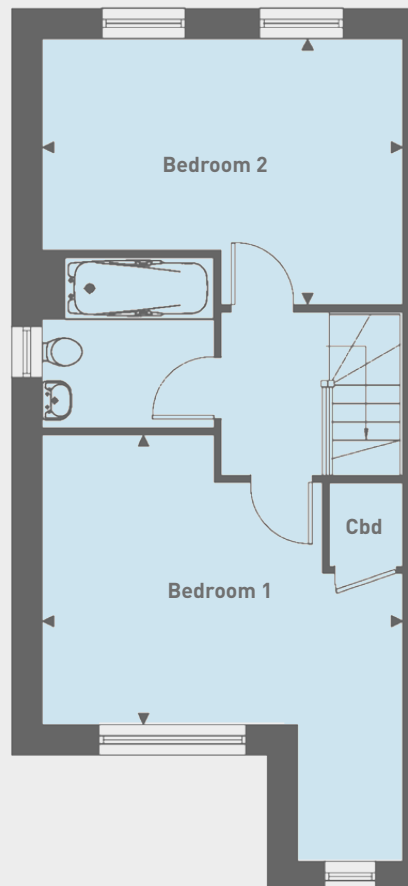
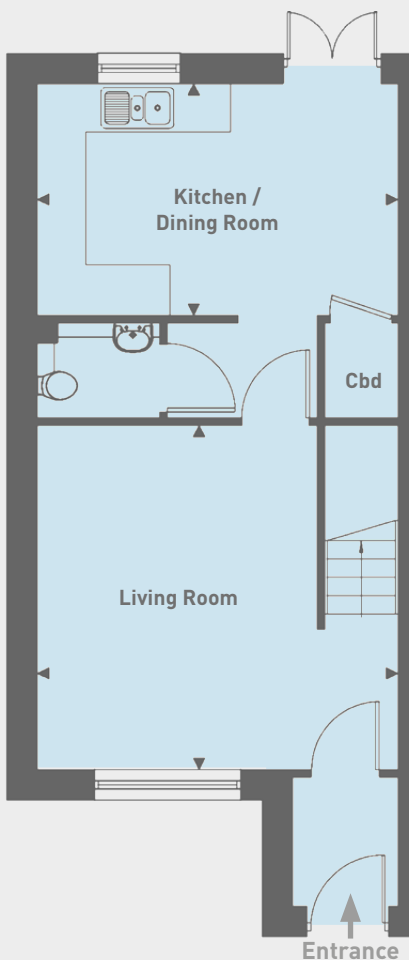
Parking for 2 cars
Turfed rear garden
Downstairs WC

£90,000 for a 40% share

Open Market Value: **£225,000**

Monthly Rent: **£309.38**

Service Charge: **£27.50**



Ground floor

Kitchen / Dining Room
4.44m x 2.85m (14'7" x 9'4")

Living Room
4.44m x 4.24m (14'7" x 13'11")

First floor

Bedroom 1
4.44m x 3.57m (14'7" x 11'9")

Bedroom 2
4.44m x 3.27m (14'7" x 10'9")

Please note that all sales particulars and images are for marketing and illustrative purposes only. CGI's are representative of the house type and not necessarily the specified plot. Plans, computer generated images and photos may contain elements which are not present upon the final completion of the property. All room dimensions are approximate and are for general guidance only.

PLOT 106

14 Cherry Court, Ansford, Castle Cary, Somerset BA7 7GL



2 bed semi-detached house

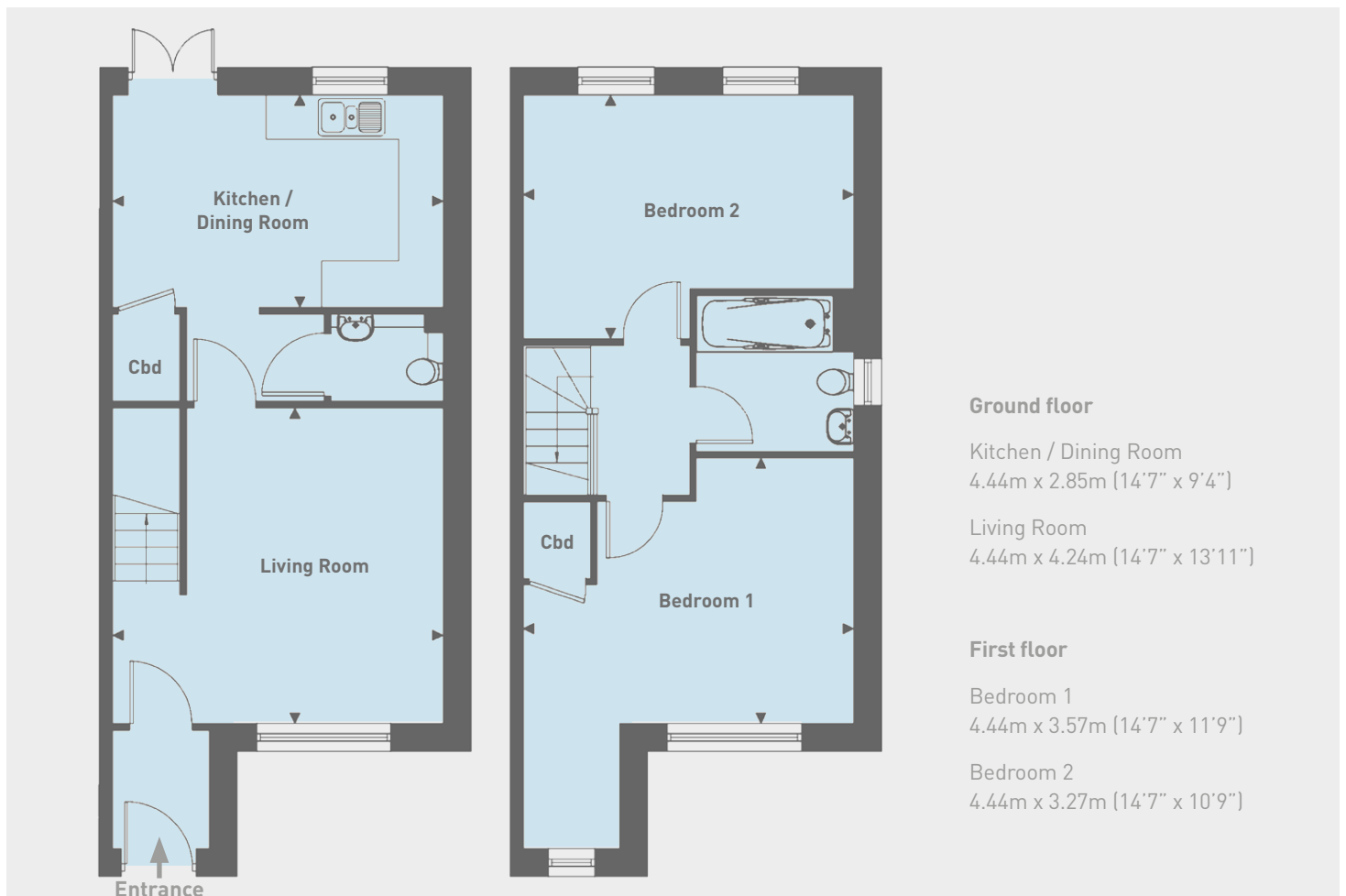
Parking for 2 cars
Turfed rear garden
Downstairs WC

£90,000 for a 40% share

Open Market Value: **£225,000**

Monthly Rent: **£309.38**

Service Charge: **£27.50**



Please note that all sales particulars and images are for marketing and illustrative purposes only. CGI's are representative of the house type and not necessarily the specified plot. Plans, computer generated images and photos may contain elements which are not present upon the final completion of the property. All room dimensions are approximate and are for general guidance only.

PLOT 107

16 Cherry Court, Ansford, Castle Cary, Somerset BA7 7GL



2 bed semi-detached house

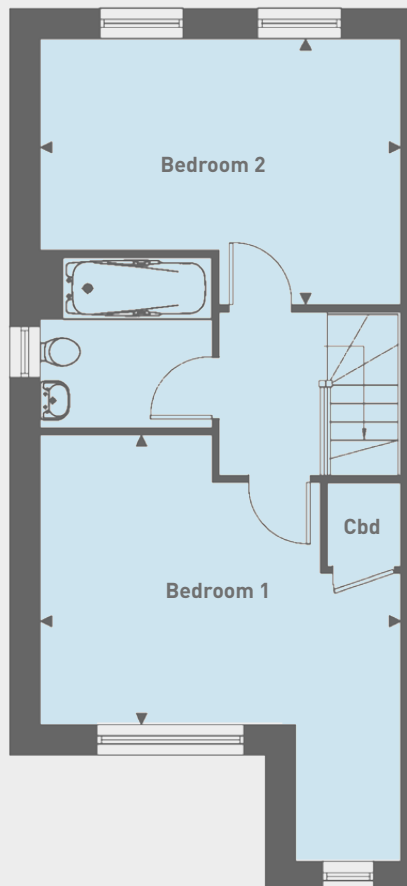
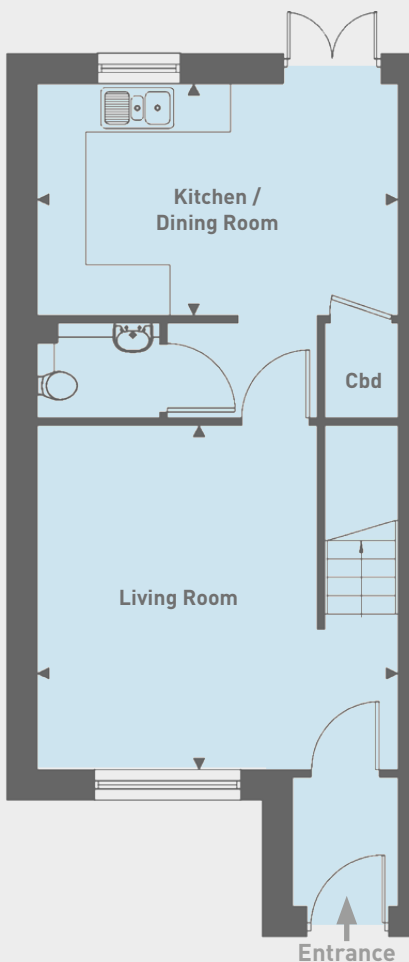
Parking for 2 cars
Turfed rear garden
Downstairs WC

£90,000 for a 40% share

Open Market Value: **£225,000**

Monthly Rent: **£309.38**

Service Charge: **£27.50**



Ground floor

Kitchen / Dining Room
4.44m x 2.85m (14'7" x 9'4")

Living Room
4.44m x 4.24m (14'7" x 13'11")

First floor

Bedroom 1
4.44m x 3.57m (14'7" x 11'9")

Bedroom 2
4.44m x 3.27m (14'7" x 10'9")

Please note that all sales particulars and images are for marketing and illustrative purposes only. CGI's are representative of the house type and not necessarily the specified plot. Plans, computer generated images and photos may contain elements which are not present upon the final completion of the property. All room dimensions are approximate and are for general guidance only.

MULBERRY MEADOWS

Castle Cary, Somerset BA7 7GG

Please note the most up-to-date availability can be found on our website www.stonewaterhomes.co.uk. Alternatively call the New Homes team to find out more on 02380 658 836

Further details are available upon request.

FIND OUT ABOUT SHARED OWNERSHIP

Please note that all sales particulars and images are for marketing and illustrative purposes only. Plans, computer generated images and photos may contain elements which are not present upon the final completion of the property.

