



Looe Street, Plymouth, Devon PL4 0EB

£140,000 LEASEHOLD



Looe Street

Plymouth, Devon PL4 0EB

Beautiful ground floor apartment with open plan living space, on the doorstep of the vibrant city centre & Barbican. Complete with two double bedrooms, ample storage space in a Grade II listed development.

Council Tax band: C

Tenure: Leasehold

- Ground Floor Two Bedroom Apartment
- Grade II Listed Development
- Fabulous Presentation Throughout
- Walking Distance to the City Centre, Barcode & Barbican
- Private Entrance
- Large Open Plan Living Space
- Main Bedroom with Walk in Wardrobe
- Three Piece Bathroom
- Low Service Charge
- Excellent Central Location



Looe Street

Plymouth, Devon PL4 0EB

Located on the ground floor with its own private entrance, you enter the property into the hallway. The hallway leads through to the open plan living space, both bedroom and the bathroom. The hallway is superbly presented, with two storage cupboards to finish and LVT flooring to finish.

The open plan living space has a fitted kitchen with space for appliances plus ample space for a range of large furniture. The room has dual aspect windows to the front and rear elevation and is superbly presented.

The main bedroom has window to the rear elevation and is a good double size. There is a large walk in wardrobe offering superb storage space, which could be converted into an en-suite if required.

Bedroom two is a smaller double room, with a window to the side elevation. The bathroom has a bath with a shower overhead, a low level w/c, hand wash basin and a heated towel rail. There is an obscured window to the front elevation and extraction fan to finish.

The property has gas central heating and is superbly presented. A viewing is highly recommended to see the finish on offer and is perfect for someone who needs to live in a quiet corner of the city centre.





Outside

Communal Garden

Tenure & Services

Tenure - Leasehold

Lease Length - 110 Years

Service Charge & Ground Rent - £1512 & £424.81
Per Annum

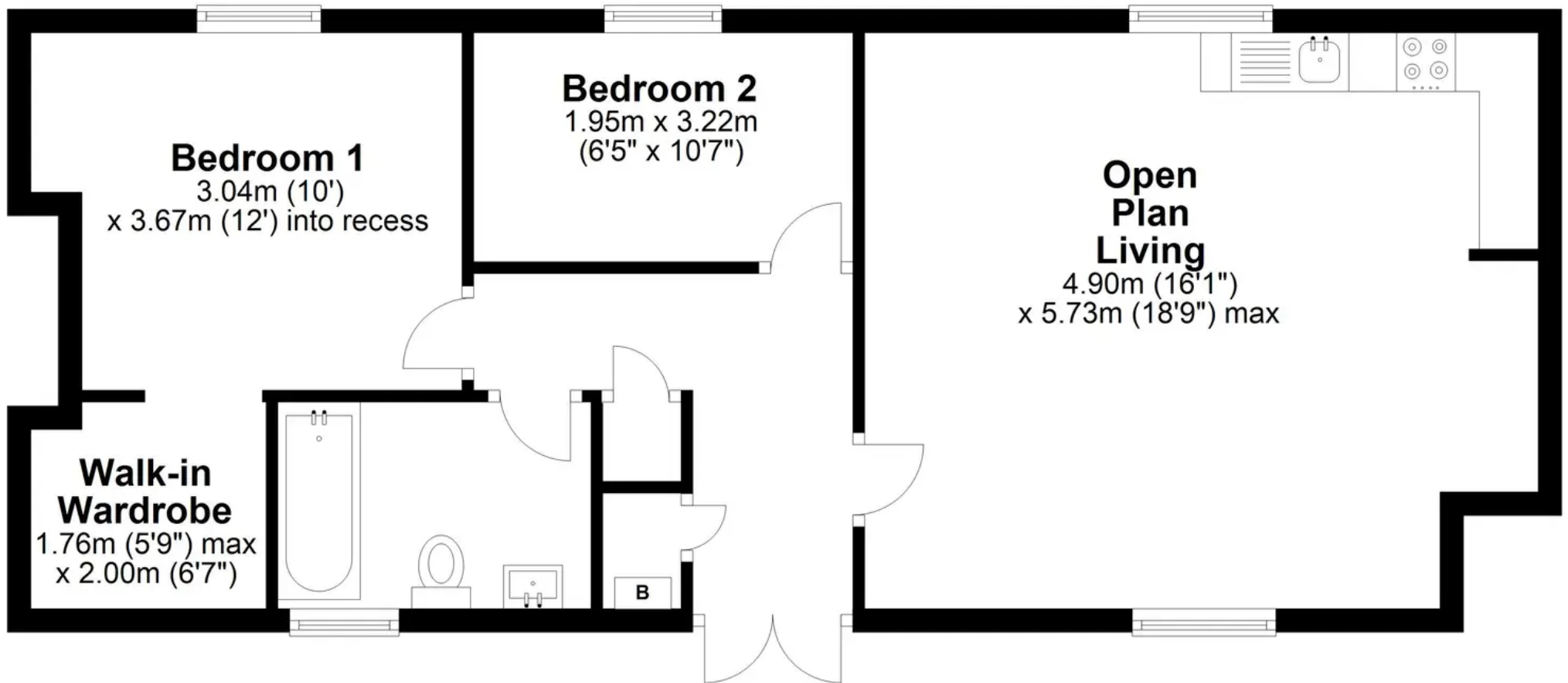
EPC - Exempt Grade II Listed

Council Tax Band - C



Ground Floor

Approx. 61.1 sq. metres (657.5 sq. feet)



Total area: approx. 61.1 sq. metres (657.5 sq. feet)

Looe Street, Astor Court, Plymouth City Centre, Plymouth



Atwell Martin

Atwell Martin, 65 Southside Street – PL1 2LA

01752 202121

plymouthsales@atwell-martin.co.uk

plymouth.atwellmartin.co.uk/

Atwell Martin Plymouth endeavour to ensure the accuracy of property details produced and displayed. Please note that we have not tested any apparatus, equipment, fixtures, fittings or services and so cannot verify that they are connected, in working order or fit for purpose. It is imperative that the buyer of any property makes such checks, prior to purchase so as to satisfy themselves of the properties suitability for their purchase. .