



Flat 1, 32 Leeds Road, Blackpool

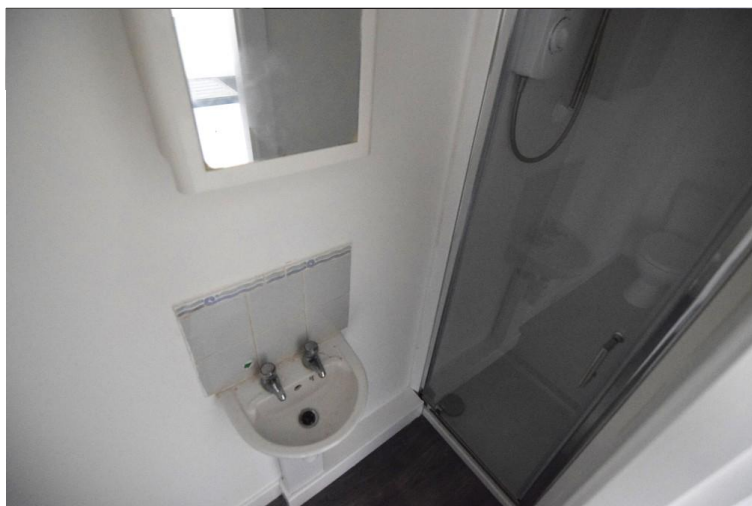
Blackpool, FY1 4HQ

- **GROUND FLOOR STUDIO FLAT**
- **MODERN KITCHEN & SHOWER ROOM**
- **MOVE IN COSTS £793**
- **NEW FLOORING**

£85 pw

EPC Rating 'E'





Property Description

LOUNGE/BEDROOM

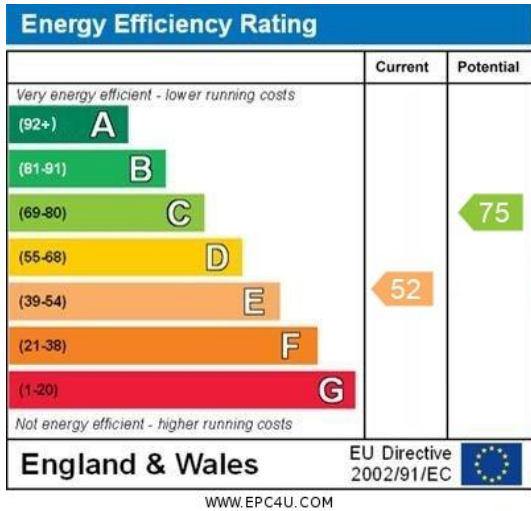
11' 56" x 13' 13" (4.78m x 4.29m) DOUBLE GLAZED WINDOW, ELECTRIC HEATER, STORAGE CUPBOARD

KITCHEN

8' 49" x 6' 78" (3.68m x 3.81m) RANGE OF WALL AND BASE UNITS, PLUMBED FOR WASHING MACHINE

SHOWER ROOM

2' 01" x 9' 73" (0.64m x 4.6m) SHOWER CUBICLE WITH ELECTRIC SHOWER, WASH HAND BASIN, WC



21 Counce Street
Blackpool
Lancashire
FY1 3LA

www.moveholmes.co.uk
01253 928200
enquiries@moveholmes.co.uk

Agents Note: Whilst every care has been taken to prepare these sales particulars, they are for guidance purposes only. All measurements are approximate are for general guidance purposes only and whilst every care has been taken to ensure their accuracy, they should not be relied upon and potential buyers are advised to recheck the measurements