



Lawsons Road, Thornton

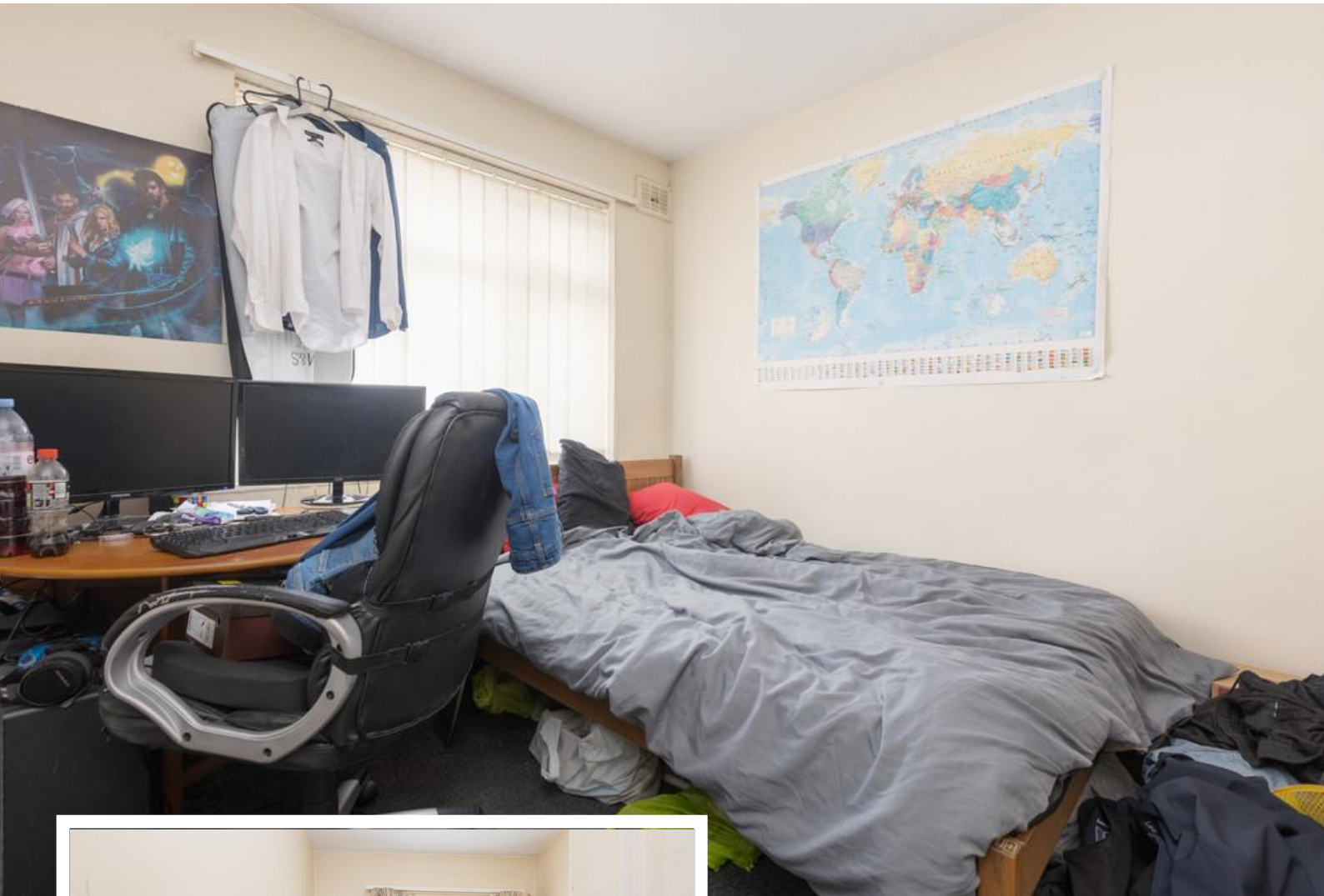
Thornton-Cleveleys, FY5 4PJ

- **SPACIOUS THREE BEDROOM SEMI DETACHED HOUSE**
- **TWO RECEPTION ROOMS**
- **FITTED KITCHEN**
- **THREE PIECE BATHROOM**

£125,000

EPC Rating '69'





Property Description

Spacious three bedroom semi detached house, situated in a popular location close to transport links, schools, shops and other local amenities.

Accommodation comprising hallway, lounge, dining room, kitchen, three first floor bedrooms and bathroom. Externally with an enclosed rear garden, garden area to the front and off road parking. The property also benefits from gas central heating and double glazing.

The property is currently tenanted and achieving £675PCM. Council tax band B.



HALLWAY

Double glazed exterior door. Double glazed window. Stairs to the first floor.

LOUNGE

13' 10" x 10' 1" (4.22m x 3.07m) Double glazed bay window to the front. Central heating radiator. Feature gas fire.

DINING ROOM

10' 0" x 7' 7" (3.05m x 2.31m) Double glazed window to the rear. Central heating radiator.

KITCHEN

10' 0" x 7' 11" (3.05m x 2.41m) A range of fitted wall and base units with complementary work surfaces. 4 ring gas hob, electric oven and extractor over. Stainless steel sink unit. Plumbed for washing machine. Double glazed door and window to the rear.

STAIRS

BEDROOM 1

13' 10" x 9' 9" (4.22m x 2.97m) Double glazed bay window to the front. Central heating radiator.

BEDROOM 2

10' 0" x 9' 9" (3.05m x 2.97m) Double glazed window to the rear. Central heating radiator.

BEDROOM 3

8' 6" x 5' 8" (2.59m x 1.73m) Double glazed window to the front. Central heating radiator.

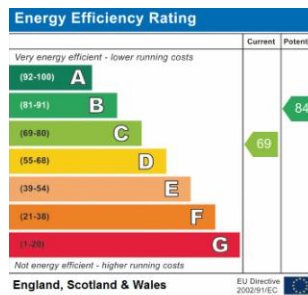
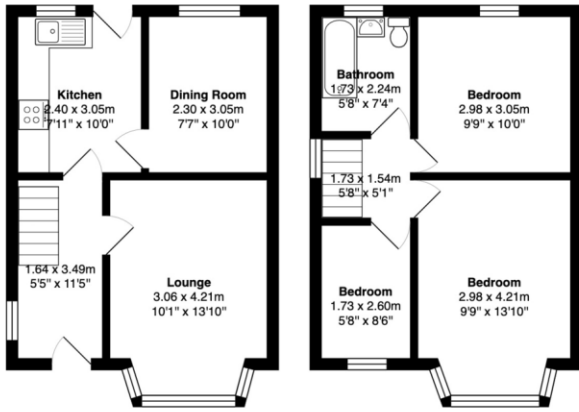
BATHROOM

5' 8" x 7' 4" (1.73m x 2.24m) Three piece suite comprising panelled bath with shower over, pedestal wash hand basin and low flush wc. Chrome heated towel rail. Double glazed window.

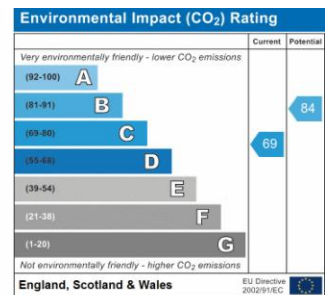
GARDENS

Enclosed paved garden to the rear. Lawned garden to the front with planted shrubs and bushes. Off road parking.





Address:
Lawsons Road



21 Counce Street
Blackpool
Lancashire
FY1 3LA

www.moveholmes.co.uk
01253 928200
enquiries@moveholmes.co.uk

Agents Note: Whilst every care has been taken to prepare these sales particulars, they are for guidance purposes only. All measurements are approximate and are for general guidance purposes only and whilst every care has been taken to ensure their accuracy, they should not be relied upon and potential buyers are advised to recheck the measurements