



5 Wolsley Road

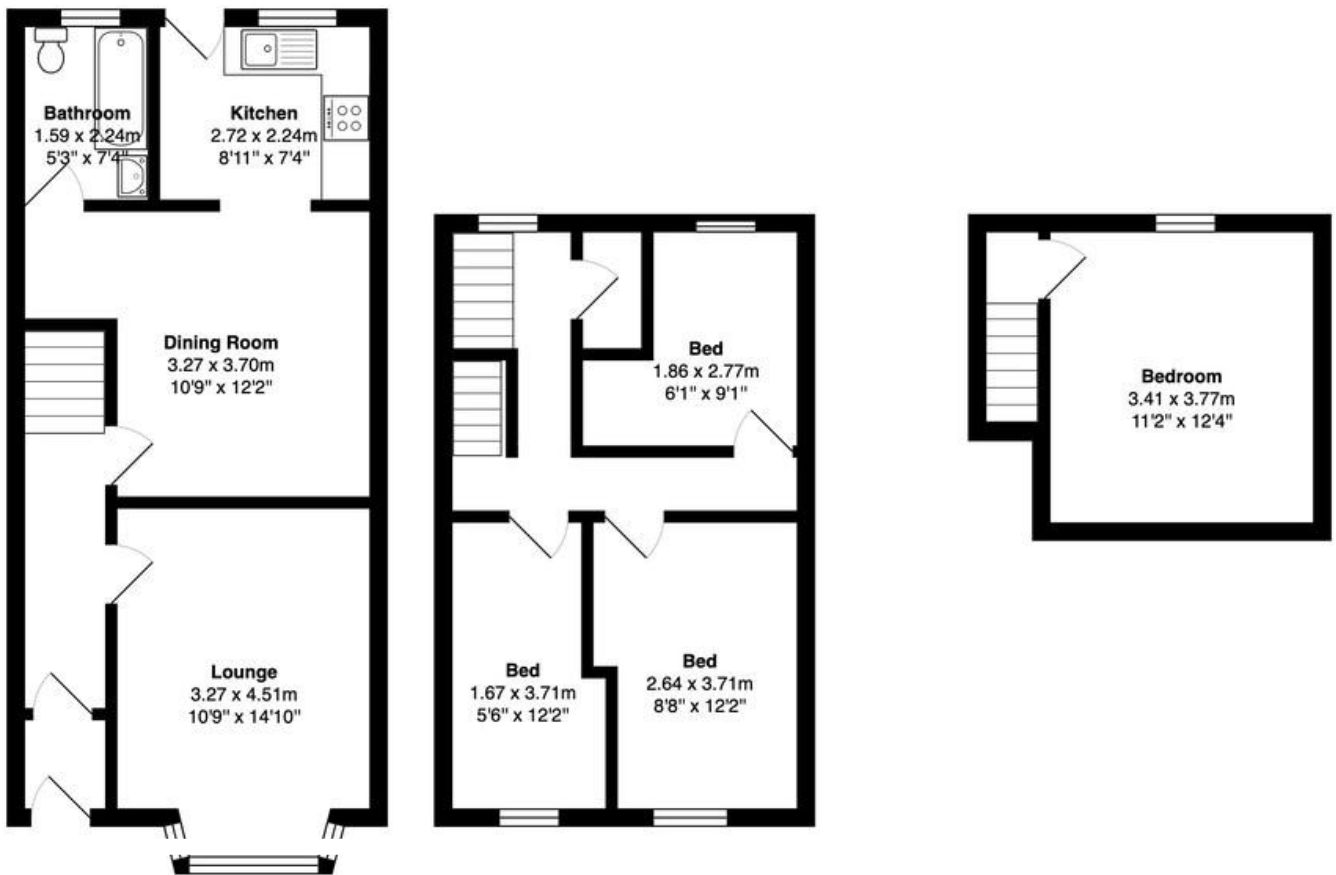
Blackpool, FY1 6HG

- **DECEPTIVE MID TERRACED HOUSE**
- **ARRANGED OVER THREE FLOORS**
- **FOUR BEDROOMS**
- **TWO RECEPTION ROOMS**

£80,000

EPC Rating 'TBC'





Property Description

Deceptively spacious four bedroom mid terraced house situated in a convenient location close to shops, schools, transport links and The Promenade. The accommodation briefly comprises entrance hall, lounge, dining room, kitchen, ground floor bathroom, three bedrooms to the first floor and a further bedroom to the second floor. The property also boasts a large basement, gas central heating and double glazing. No chain involved

ENTRANCE HALL

Double glazed entrance door. Stairs leading to the first floor.

LOUNGE

14' 10" x 10' 9" (4.52m x 3.28m) Double glazed window to the front elevation. Feature fireplace. Central heating radiator.

DINING ROOM

12' 2" x 10' 9" (3.71m x 3.28m)

KITCHEN

8' 11" x 7' 4" (2.72m x 2.24m) Range of fitted wall and base units with complimentary work surfaces. Tiled splashbacks. Stainless steel sink unit. Double glazed window to rear. Double glazed door leading out to the rear.

BATHROOM

Modern three piece suite comprising panelled bath with shower over, pedestal wash hand basin and low flush wc. PVC panelled walls. Double glazed window. Central heating radiator.

BEDROOM ONE

12' 2" x 8' 8" (3.71m x 2.64m) Double glazed window. Central heating radiator.

BEDROOM TWO

12' 2" x 5' 6" (3.71m x 1.68m) Double glazed window. Central heating radiator.

BEDROOM THREE

9' 1" x 6' 1" (2.77m x 1.85m) Double glazed window. Central heating radiator.

BEDROOM FOUR

12' 4" x 11' 2" (3.76m x 3.4m)

EXTERIOR

Easily maintained garden areas to the front and rear.

%epcGraph_c_1_325%

21 Counce Street
Blackpool
Lancashire
FY1 3LA

www.moveholmes.co.uk
01253 928200
enquiries@moveholmes.co.uk

Agents Note: Whilst every care has been taken to prepare these sales particulars, they are for guidance purposes only. All measurements are approximate and are for general guidance purposes only and whilst every care has been taken to ensure their accuracy, they should not be relied upon and potential buyers are advised to recheck the measurements