



6 Gower Road, Haywards Heath, West Sussex RH16 4PJ

£425,000

FREEHOLD



**MANSSELL
McTAGGART**
Trusted since 1947

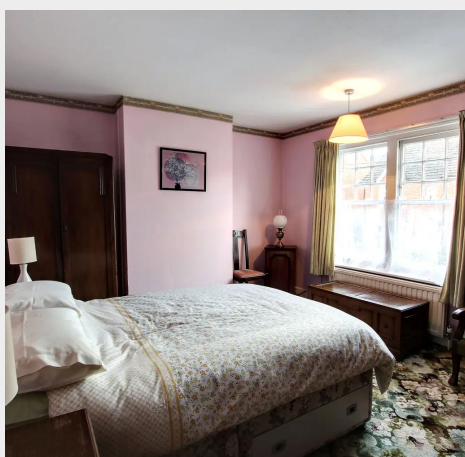


A 3 bedroom Victorian semi-detached cottage owned by the same family for about 100 years with a driveway and garage alongside in need of general updating and offering great potential for an extension. The property is ideally placed on the edge of the town centre within easy reach of Victoria Park, the shops, Broadway, schools and just a 0.8 miles walk to the railway station.

- Character home in central location
- Within a stone's throw of the South Road shops - Close to Victoria Park and The Broadway
- 0.8 mile walk to the railway station - Easy walk to several primary schools and Warden Park Secondary Academy catchment area
- Owned by the same family since 1925
- Presented in very clean and tidy order throughout but does require general updating
- Numerous character features & original sash windows
- Sitting room with bay window - Separate dining room - Kitchen - Rear lobby with utility cupboards
- Downstairs bathroom with a fabulous pink 1970s suite - 3 first floor bedrooms
- Garage and driveway parking - Triangular shaped plot with paved courtyard and additional side garden next to the garage
- Potential to extend and/or loft conversion if required STPP
- For sale with no onward chain
- EPC rating: D - Council Tax Band: D



The house is situated at the western end of Gower Road within a 3 minute walk of the glorious Victoria Park and main shopping area of South Road. The Orchards Shopping Centre and Broadway are a few minutes further on where there is an extensive range of restaurants, cafés and bars. The railway station is 0.8 miles distant and provides fast commuter services to London Bridge/Victoria 45 mins, Gatwick Airport 15 mins and the south coast at Brighton in 20 mins. There are several schools within walking distance including St Wilfrid's, St Joseph's RC Primary and the Warden Park Primary Academy School. Oathall Community College with its farm in Lindfield is the closest school however some children go to Warden Park Secondary Academy school in Cuckfield. Distances (approx miles on foot/car/train) Primary Schools: St Wilfrid's (0.5) St Joseph's RC (0.5) Warden Park Junior Academy (0.5) Secondary Schools: Oathall Community College (1.3) Warden Park Secondary Academy (2.0) St Paul's RC in Burgess Hill (5.9) Haywards Heath 6th Form College (1.2) Railway Station 0.8 (London Bridge/Victoria 45 mins, Gatwick Airport 15 mins, Brighton 20 mins) Gatwick airport (14) Brighton seafront (14) A23 – Bolney (6)





Mansell McTaggart Haywards Heath

7 Muster Green, Haywards Heath, West Sussex RH16 4AP

01444 456431

hh@mansellmctaggart.co.uk

www.mansellmctaggart.co.uk/branch/haywardsheath

Consumer Protection from Unfair Trading Regulations 2008 We have not tested any apparatus, equipment, fixtures, fittings or services and so cannot verify that they are in working order or fit for purpose. You are advised to obtain verification from your solicitor or surveyor. References to the tenure of a property are based on information supplied by the seller. We have not had sight of the title documents and a buyer is advised to obtain verification from their solicitor. Items shown in photographs are not included unless specifically mentioned within the sales particulars, but may be available by separate negotiation.