



**Flat 36, Building 45, Hopton Road, Royal Arsenal Riverside, Woolwich, London, London,
SE18 6TH**

RESALE - Vanquish Real Estate is delighted to offer this generously sized, two-bedroom, two-bathroom duplex apartment with a mezzanine.

2 Bedrooms | 2 Bathrooms

Asking Price £435,000



Terms and Conditions

Price

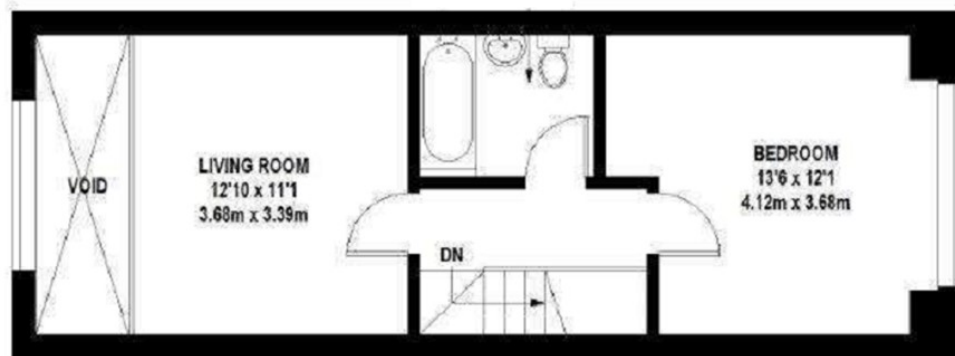
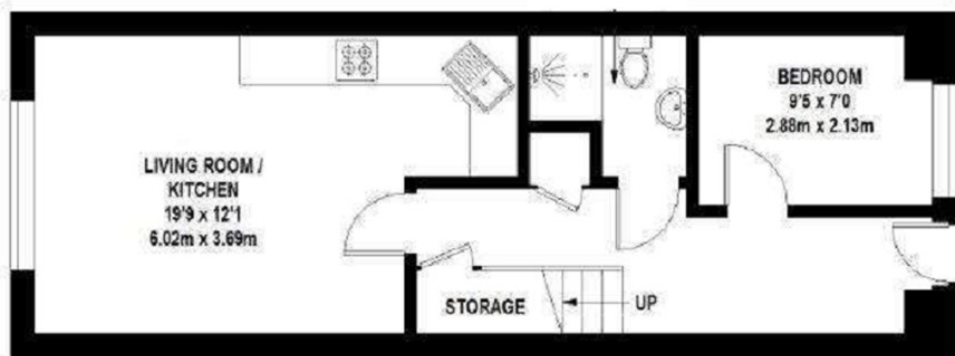
Asking Price £435,000

Tenure

Disclaimer

These particulars have been produced as a general guide for this property only and no other purpose. They are not an offer or contract. You should not rely on statements in these particulars by word of mouth or in writing as being factually accurate about the property, its condition or its value. Neither any primary agent or joint agent has any authority to make or give any representations or warranties in relation to the property, and accordingly any information given is entirely without responsibility on the part of the agents or seller(s).

The photographs show only certain parts of the property as they appeared at the time they were taken. Any areas, measurements and distances given are approximate only. Any reference to alterations to, or use of, any part of the property does not mean that any necessary planning, building regulations or other consent has been obtained nor have any services, equipment or facilities been tested. A buyer should satisfy themselves by inspection or otherwise. The VAT position relating to the property may change without notice. Please contact us for more information regarding the property redress scheme which we are a member of.



FIRST FLOOR



Coming soon

