



People Make Places



Neal's Yard, Covent Garden WC2

2 bedrooms | 840 sq ft

£875 pw





Situated on the first floor of a warehouse building in the picturesque Neals Yard, this beautiful two bedroom, two bathroom apartment has been recently refurbished to an exceptional standard and includes an open plan reception room with warehouse doors opening onto a Juliette balcony that overlooks Neals Yard.

What you need to know

- Two bedrooms
- Two bathrooms
- Warehouse apartment
- First floor (walk up)
- Recently refurbished
- Unfurnished
- Views of Neals Yard
- Wood floors throughout
- Available mid-February
- Close to Covent Garden tube station





Overview

There is a master bedroom with en-suite shower room, second guest bedroom and further guest shower room. Available late February on an unfurnished basis. The landlord offers a 3 year contract with a mutual 6 month break clause, subject to contract and satisfactory references. Camden Council band: F.

WHAT WE LOVE:

The location in Neals Yard
Beautifully refurbished
Seconds from The Barbary - one of our favourite restaurants
Monmouth Coffee is just around the corner
Close to Seven Dials food hall.

WHAT YOU NEED TO KNOW:

Located above Homeslice restaurant
First floor (walk up)
Double glazed
Wood floors throughout
There will be noise from the restaurant below.





Neal's Yard, Covent Garden WC2

People Make Places

London is collection of inspiring urban villages and one of the most exciting places in the world to live, work & play.

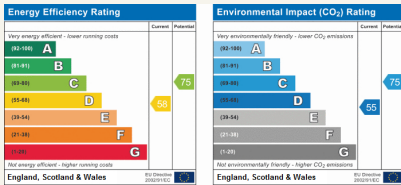
We work with both property owners and their occupiers, sharing the story of these vibrant neighbourhoods, conveying the unique soul & energy to future custodians, the people who'll keep them buzzing.

And unlike many real estate businesses we're not just about buildings, because streets & buildings don't make a neighbourhood.

We're about building relationships, because **people make places**.

MISINTERPRITATION ACT [COPYRIGHT] DISCLAIMER: Tavistock Bow Ltd for themselves and for the vendor(s) of this property whose agents thy are, given notice that: 1. These particulars do not constitute, not constitute any part of, an offer or contract. 2. None of the statements contained in these particulars as to the property are to be relied on as statements or representations of fact. 3. Any intending purchaser or lessee must satisfy themselves by inspection or otherwise as to the correctness of each of the statements contained in these particulars. 4. The vendor(s) or lessor(s) do not make or give and neither Tavistock Bow Ltd nor any person in their employment has any authority to make or give any representation or warranty whatever in relation to this property. Finance Act 1989, Unless otherwise stated all prices and rents are quote exclusive of VAT. Property Misrepresentation Act 1991; These details are believed to be correct at the time of compilation but may be subject to subsequent amendment.

Follow us:     @tavistockbow

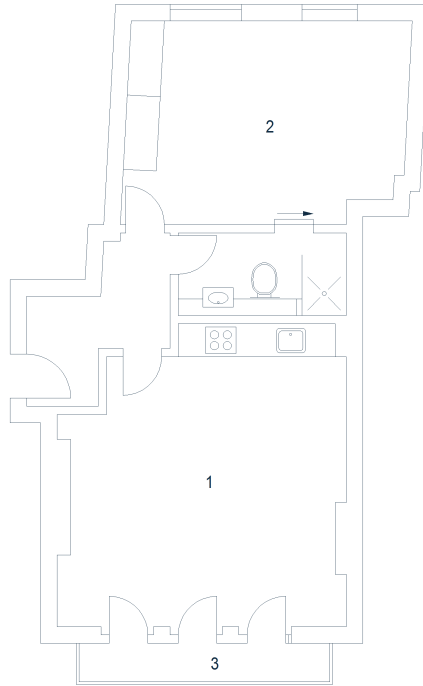


Cooper House, W1

Approximate Gross Internal Area 57 sq m / 614 sq ft

Second Floor

- 1 Kitchen / Reception Room
5.66 x 5.06M
18'7" x 16'7"
- 2 Bedroom
5.10 x 3.69M
16'9" x 12'1"
- 3 Balcony
4.59 x 0.70M
15'1" x 2'4"



Floor Plan produced for Tavistock Bow by Mays Floorplans © . Tel 020 3397 4594
Illustration for identification purposes only, not to scale.

tavistockbow

21 New Row, Covent Garden,
London, WC2N 4LE

t: 020 7477 2177
e: hello@tavistockbow.com
w: tavistockbow.com



Neal's Yard, Covent Garden WC2