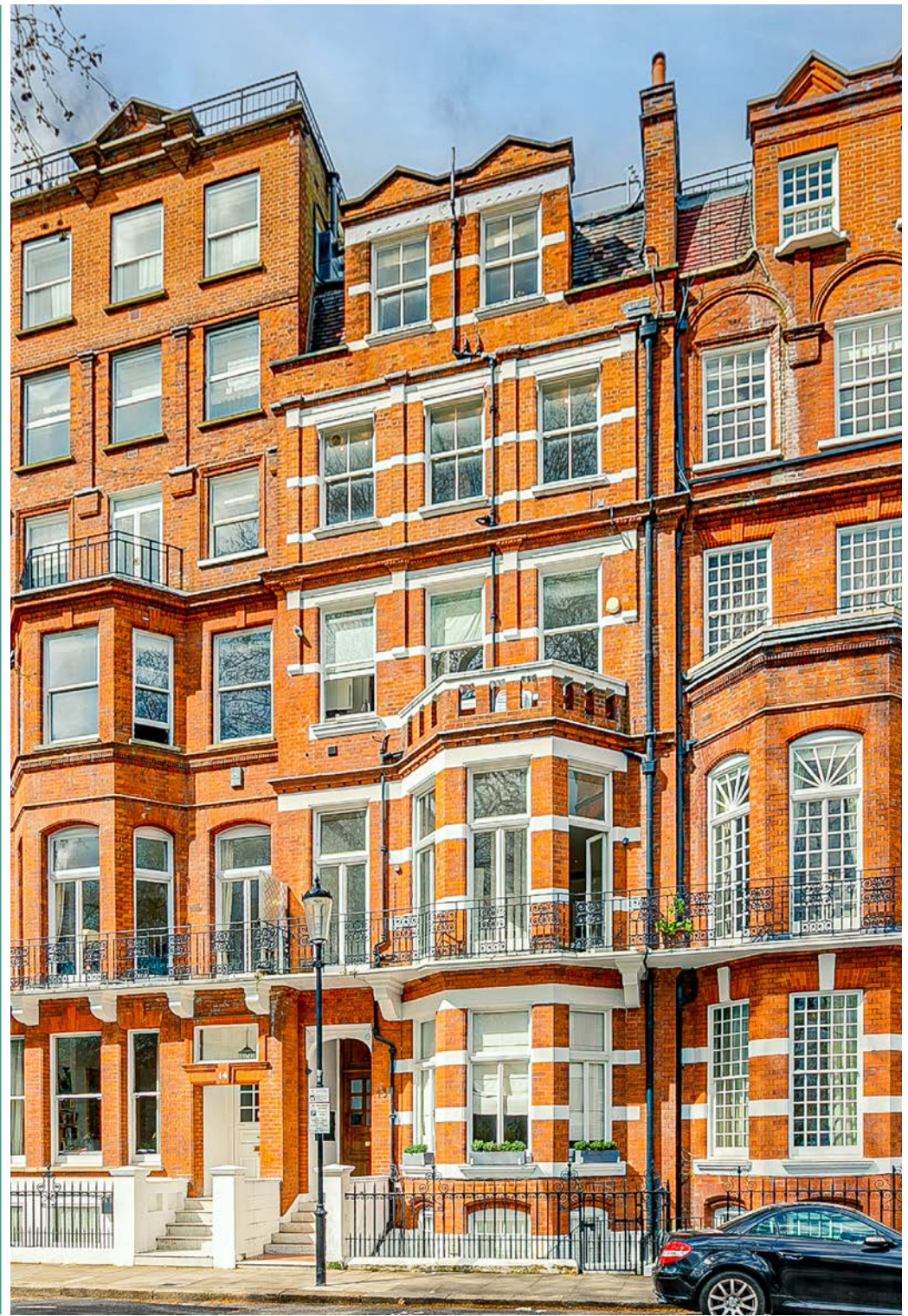




# EGERTON GARDENS

KNIGHTSBRIDGE SW3

---

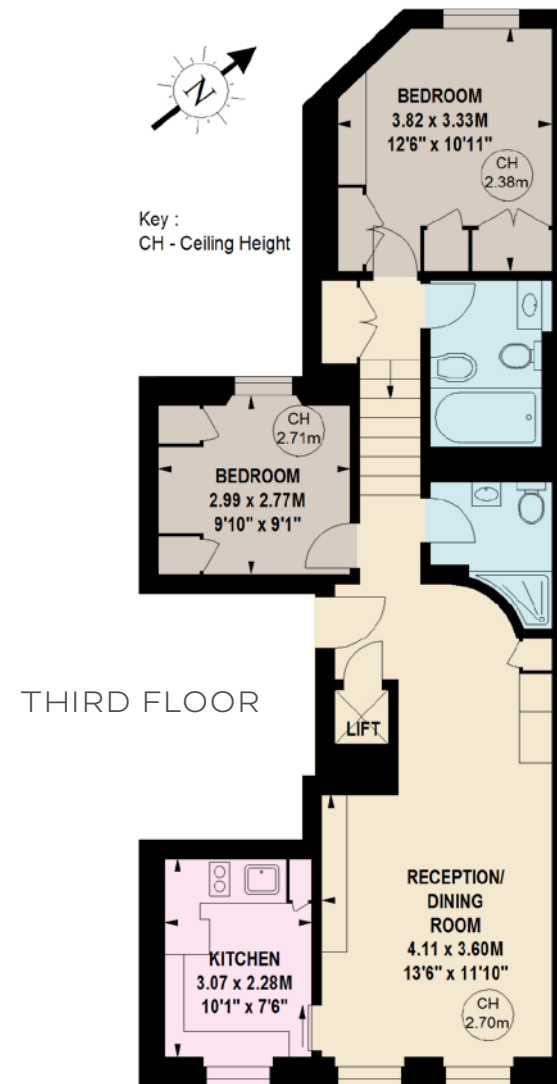






THIS SUPERB APARTMENT IS LOCATED ON THE THIRD FLOOR OF A DESIRABLE GARDEN SQUARE IN THE CHELSEA AREA.

The property boasts open views of gardens front to back, convenient direct lift access, lovely shared gardens, ample storage, bright and airy rooms, and a high-quality finish. Its prime location means you have easy access to local shops and facilities, providing everything you need for comfortable and practical living.



APPROXIMATE GROSS INTERNAL AREA  
70.98 SQ M / 764 SQ FT

FEATURES

- Leasehold with 75 Years Remaining
- Two Double Bedrooms
- Two Bathrooms
- Reception Room
- Kitchen
- Direct Lift Access
- Access To Communal Gardens

PRICE: £1,500,000

TENURE: Leasehold with 75 Years Remaining

GROUND RENT: £450 per annum

SERVICE CHARGE: £9,703.32 inc. £1,450.00 reserve fund contributions

These details have been prepared for general guidance only and should not be relied upon by prospective purchaser/ tenants who before proceeding must check and otherwise satisfy themselves as to the property and the nature, state and availability of any facility or service.

Brochure by TwentyOneFifty Tel: 020 8778 2150



NICOLAS VAN PATRICK

6-8 MONTPELIER STREET,  
LONDON SW7 1EZ  
SALES | +44 (0)20 7581 8277  
LETTINGS | +44 (0)20 7590 1200

info@nicolasvanpatrick.com  
www.nicolasvanpatrick.com