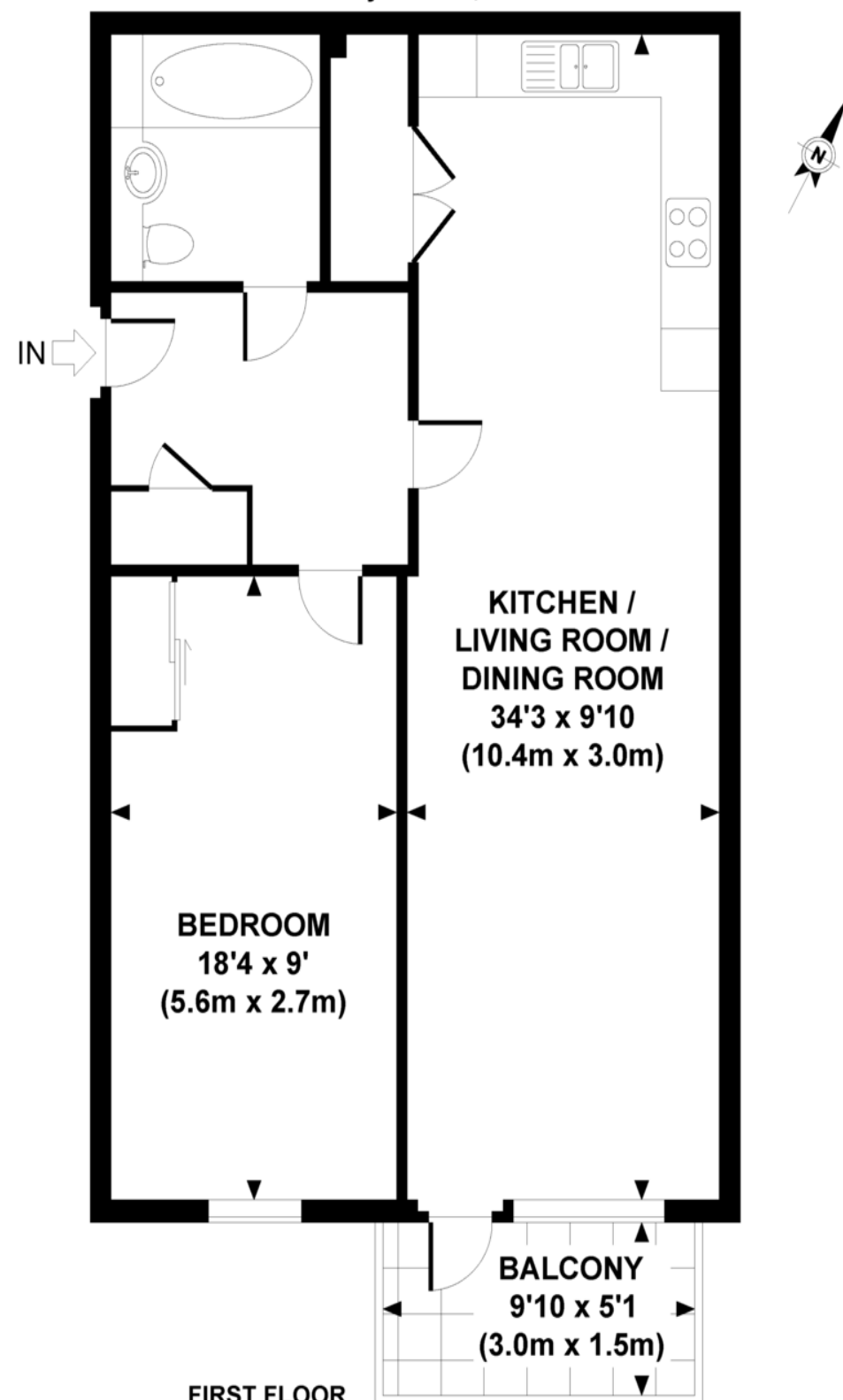


Melody House, NW10



FIRST FLOOR

APPROXIMATE GROSS INTERNAL AREA 675 SQ FT / 62.7 SQ M

Whilst every attempt has been made to ensure the accuracy of this floor plan, measurements of door, windows, rooms and all other items are approximate. No responsibility is taken for any error, omission or mis-statement. This floor plan is for illustrative purposes only, and should be treated as such.



Melody House, NW10 8GJ

£340,000 Leasehold

Key Features

- Stunning Apartment
- Highly Sought After
- 640 SQ FT
- Long Lease
- Huge Reception Room
- No Chain
- Sought After Development
- Close To High Street

Description

A gorgeous one-bedroom luxury apartment in this highly sought-after purpose-built block which has been well maintained throughout and is over 640 sq ft with a large private balcony. The property is ideal for buy to let investors or first-time buyers and is priced for an early sale.

