



**Bagber Road**  
Totton, Southampton  
Asking Price Of - £295,000



- Semi-Detached House
- Dining Room
- Two Double Bedrooms
- Spacious Kitchen

**EPC Rating**

D



## Property Description

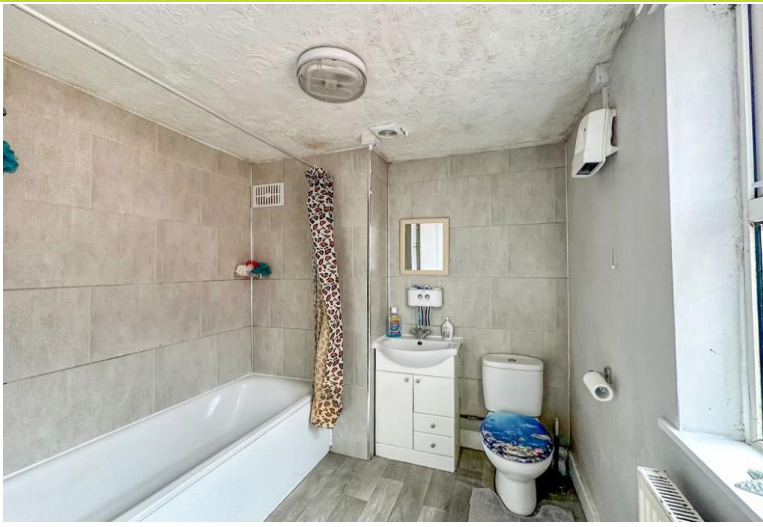
**LIVING ROOM** Bright living room with front aspect double glazed windows, plush carpets and radiator.

**DINING ROOM** Spacious dining room with access into the kitchen and side aspect double glazed window overlooking the garden. Plush carpets and radiator.

**KITCHEN** Comprising of wall and base level storage, black work surfaces and a single drainer stainless steel sink with chrome mixer tap, Space for; cooker, washing machine and dryer as well as fridge freezer. Tiled surrounds and lino flooring. Side aspect double glazed window and UVPC door to garden, access to utility.

**BEDROOM ONE** Spacious double bedroom with rear aspect double glazed window and direct access to family bathroom.

**BEDROOM TWO** Another spacious double bedroom with a front aspect double glazed window.



**FAMILY BATHROOM** Off the master bedroom the family bathroom is comprising of a white ceramic basin with chrome mixer tap and storage underneath, white ceramic WC with push button flush and white enamel bath with shower overhead. Side aspect double glazed frosted window, tiled walls, lino flooring and extractor fan.

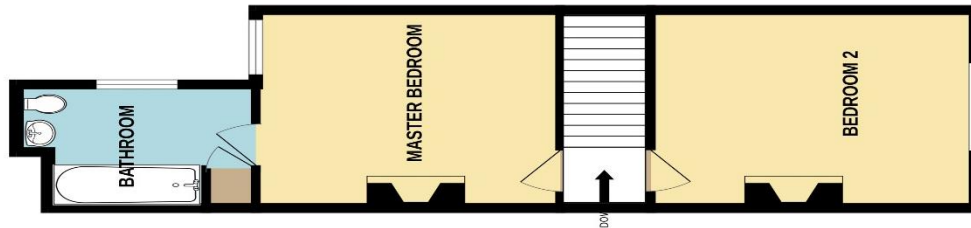


**UTILITY ROOM** Downstairs utility area off the kitchen, space for fridge freezer. rear aspect double glazed window and side aspect UVPC door to garden.

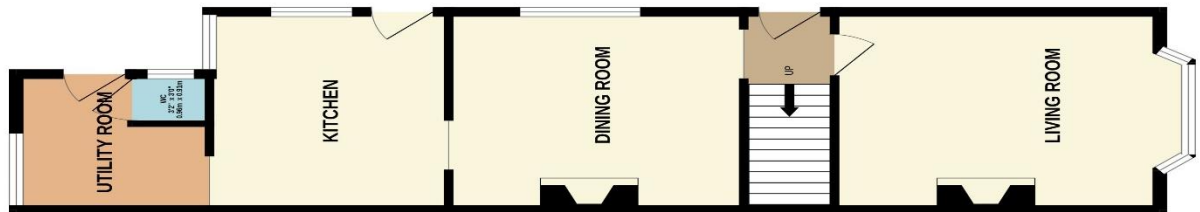
**GARDEN** Expansive enclosed rear garden with patio seating area and large stretch of lawn. Gated side access.



1ST FLOOR  
407 sq.ft. (37.8 sq.m.) approx.



GROUND FLOOR  
523 sq.ft. (48.3 sq.m.) approx.



Hotspur House  
Prospect Place  
Hythe  
Southampton  
Hampshire

[www.hytheandwaterside.com](http://www.hytheandwaterside.com)  
[darren@hytheandwaterside.com](mailto:darren@hytheandwaterside.com)  
0238 0845 434

Agents Note: Whilst every care has been taken to prepare these sales particulars, they are for guidance purposes only. All measurements are approximate are for general guidance purposes only and whilst every care has been taken to ensure their accuracy, they should not be relied upon and potential buyers are advised to recheck the measurements