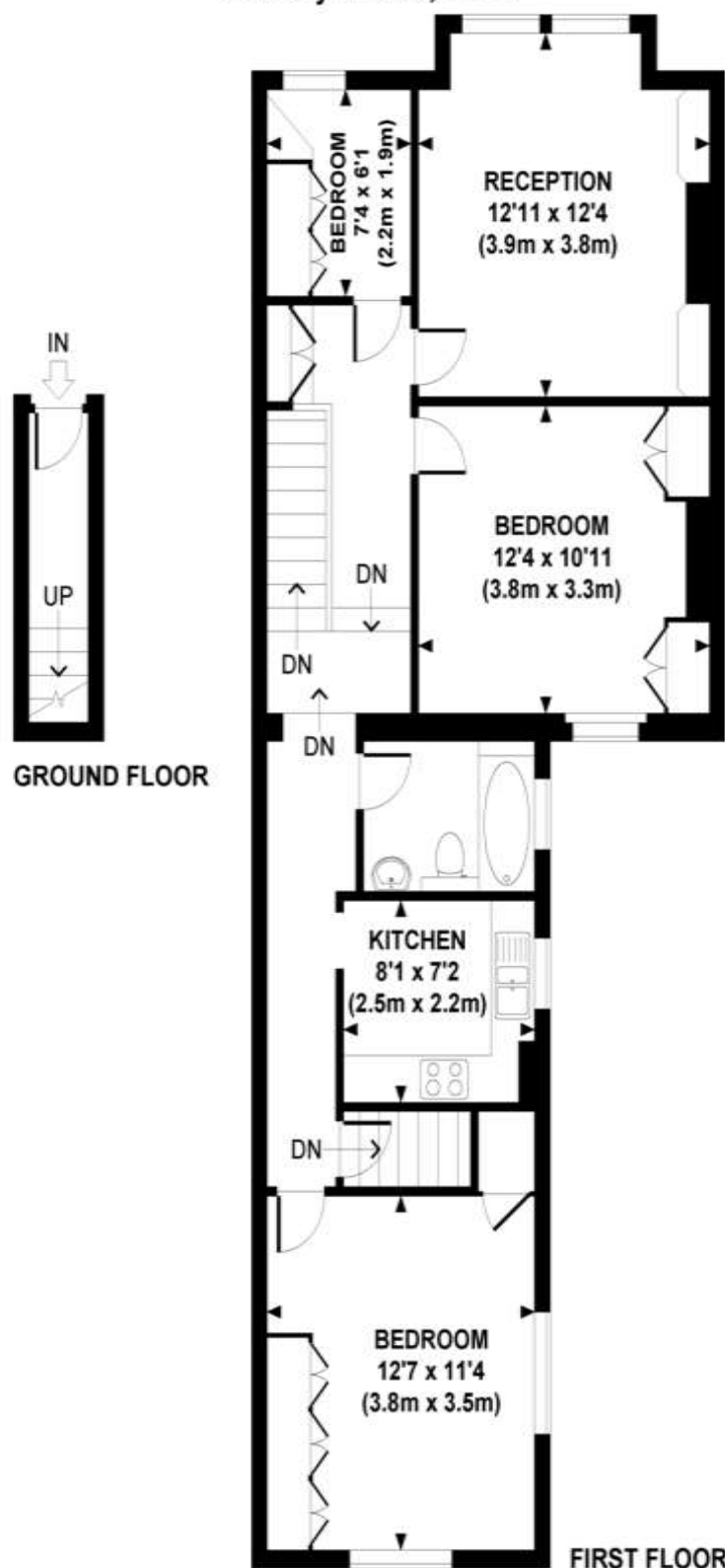


St. Mary's Road, NW10



APPROXIMATE GROSS INTERNAL AREA 799 SQ FT / 74.3 SQ M

Whilst every attempt has been made to ensure the accuracy of this floor plan, measurements of door, windows, rooms and all other items are approximate. No responsibility is taken for any error, omission or mis-statement. This floor plan is for illustrative purposes only, and should be treated as such.



## St. Marys Road, London, NW10 4AT

### £350,000 Leasehold

#### Key Features

- Three Bedroom Apartment
- Packed With Charm
- Private Garden
- 54 Year Lease
- Cash Offers Invited
- No Chain
- Needs Updating
- Must Be Seen

#### Description

Ideal for Investors or developers this 800 sq ft three bedroom first floor apartment is in need of some updating but offers the space and potential to create an amazing apartment. The property has a sunny private garden and is quietly situated on the sought after St Marys road close to the heart of vibrant Harlesden. As the property has a short lease we are advised to seek best and final cash offers only with a deadline to be advised.

