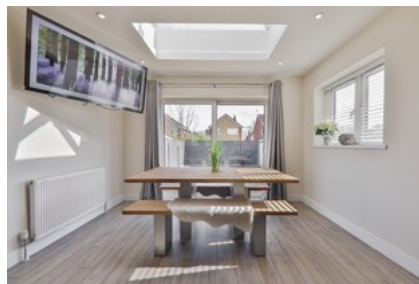




Lime Tree Avenue, Beverley

INVITING OFFERS BETWEEN £240,000 - £260,000



- ✓ Cul De Sac Location
- ✓ Stunning Fully Renovated Family Home
- ✓ Luxury Fitted Kitchen And Bathrooms
- ✓ Three Double Bedrooms
- ✓ Integral Garage, Off Street Parking And Low Maintenance Garden
- ✓ Freehold
- ✓ Band B

Guide Price **£240,000**

Bedroom 3 Bathroom 2 Reception 1