



23a, Ray Mill Road East, Maidenhead, Berkshire, SL6 8SW

## 23A RAY MILL ROAD EAST, MAIDENHEAD BERKSHIRE SL6 8SW

**GUIDE PRICE £1,150,000 FREEHOLD**

At the end of a quiet cul-de-sac, occupying an enviable lakeside position with outstanding views over Summerleaze Lake. An impressive gated detached family home of contemporary design, providing spacious accommodation featuring large open plan reception areas, unique galleried landing and four large bedrooms with three bathrooms (two en-suite). A quite unique opportunity to acquire a home in such an idyllic location, viewing is highly recommended.

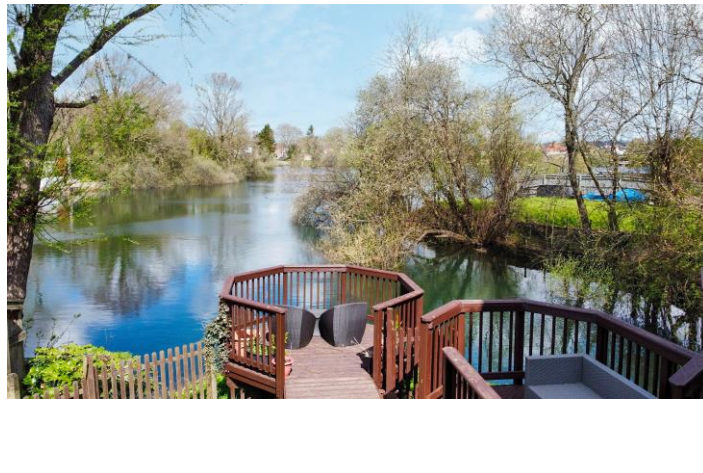


- CONTEMPORARY DESIGNED DETACHED HOUSE
- PICTURESQUE VIEWS OF SUMMERLEAZE LAKE
- LARGE OPEN PLAN RECEPTION ROOM
- FOUR DOUBLE BEDROOMS
- THREE BATHROOMS (TWO EN-SUITE)
- GAS CENTRAL HEATING
- REAR GARDEN WITH SUN TERRACE & PANORAMIC LAKE VIEWS
- GATED DRIVEWAY & DOUBLE GARAGE
- IMPRESSIVE RECEPTION HALL & CLOAKROOM
- GALLERIED LANDING
- EPC RATING C

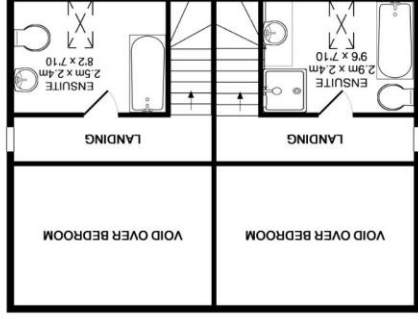


The property is located within approx. one mile from Maidenhead town centre with its mainline railway station (Paddington/Elizabeth Line). The property is also within close proximity of Boulter's Lock which is bordered with open countryside providing riverside walks along the River Thames and Jubilee River. Boulter's Lock restaurant and Roux at Skindles are walkable and the picturesque village of Cookham is also nearby.

Council Tax Band G £2597.23 per annum



2ND FLOOR

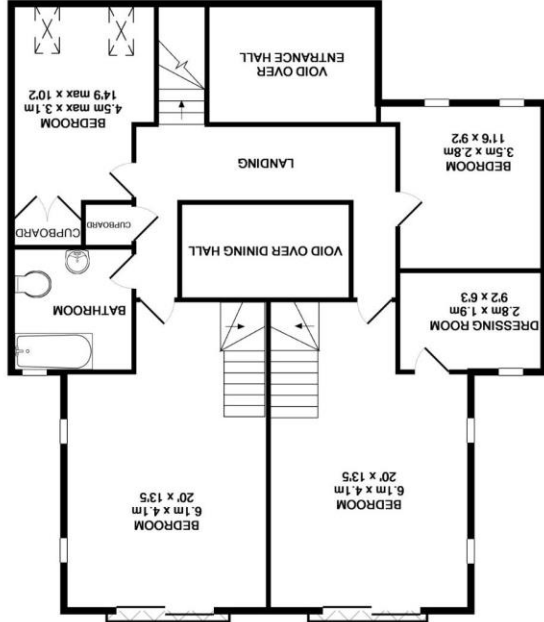


Whilst every attempt has been made to ensure the accuracy of the floor plan contained here, measurements of doors, windows, rooms and other items are approximate and no responsibility is taken for any omission or mis-statement. This plan is for illustrative purposes only and should be used as such by any prospective purchaser. The services, systems and appliances shown have not been tested and no guarantee as to their operability or efficacy can be given.

Made with Metropix ©2010



1ST FLOOR



GROUND FLOOR

