



18A

Beenoskee, Townsend Drive, St. Albans, AL3 5RQ £2,500,000 Freehold

5 Bedrooms 3 Bath/Shower Rooms 3 Reception Rooms Garage & Off-Street Parking 270ft Garden

EPC Band C Council Tax: Band: H £4,310.22 (2024/2025) St Albans City & District Council

ashtons.co.uk

The  
Collection  
TOWN | COUNTRY | EQUESTRIAN

## Beenoskee, Townsend Drive, St. Albans

Impressive detached five bedroom family home of over 4000 sq. ft with 270ft garden located in a sought after position close to the centre of St Albans and within close proximity to excellent schools.

### Description

This superb family home was built by the current owners to a high standard and is beautifully presented throughout, offering spacious accommodation over three floors. The property sits on a sizeable plot with lovely rear garden.

The ground floor accommodation includes a spacious entrance hall, large living room with Oak flooring and feature fireplace with log burner. To the rear is a stunning kitchen fully fitted with bespoke units, central island with marble worktop, space for a Range style cooker and integrated appliances. The kitchen is open-plan to an impressive family room with lantern style roof light. Both rooms have bi-fold doors opening out to the rear garden. A study, utility room and cloakroom complete the ground floor.

Upstairs on the first floor there are three double bedrooms. The principal bedroom benefits from a luxurious en-suite bathroom with free-standing bath. A sumptuous family bathroom serves the other two bedrooms. On the second floor there are two further double bedrooms, one with en-suite facilities.

Outside to the front of the property a gated gravel driveway provides parking for numerous vehicles and gives access to the garage. The rear garden measures just over 270ft in length and is a particular feature.

### Location

Living in the vibrant city of St Albans you'll have a wealth of history, culture and leisure facilities "on your doorstep" and, with great commuting links, you can be in London in just 20 minutes by rail.

The city was named for Alban, Britain's first Christian martyr and today the Abbey bearing his name welcomes visitors from all over the world.

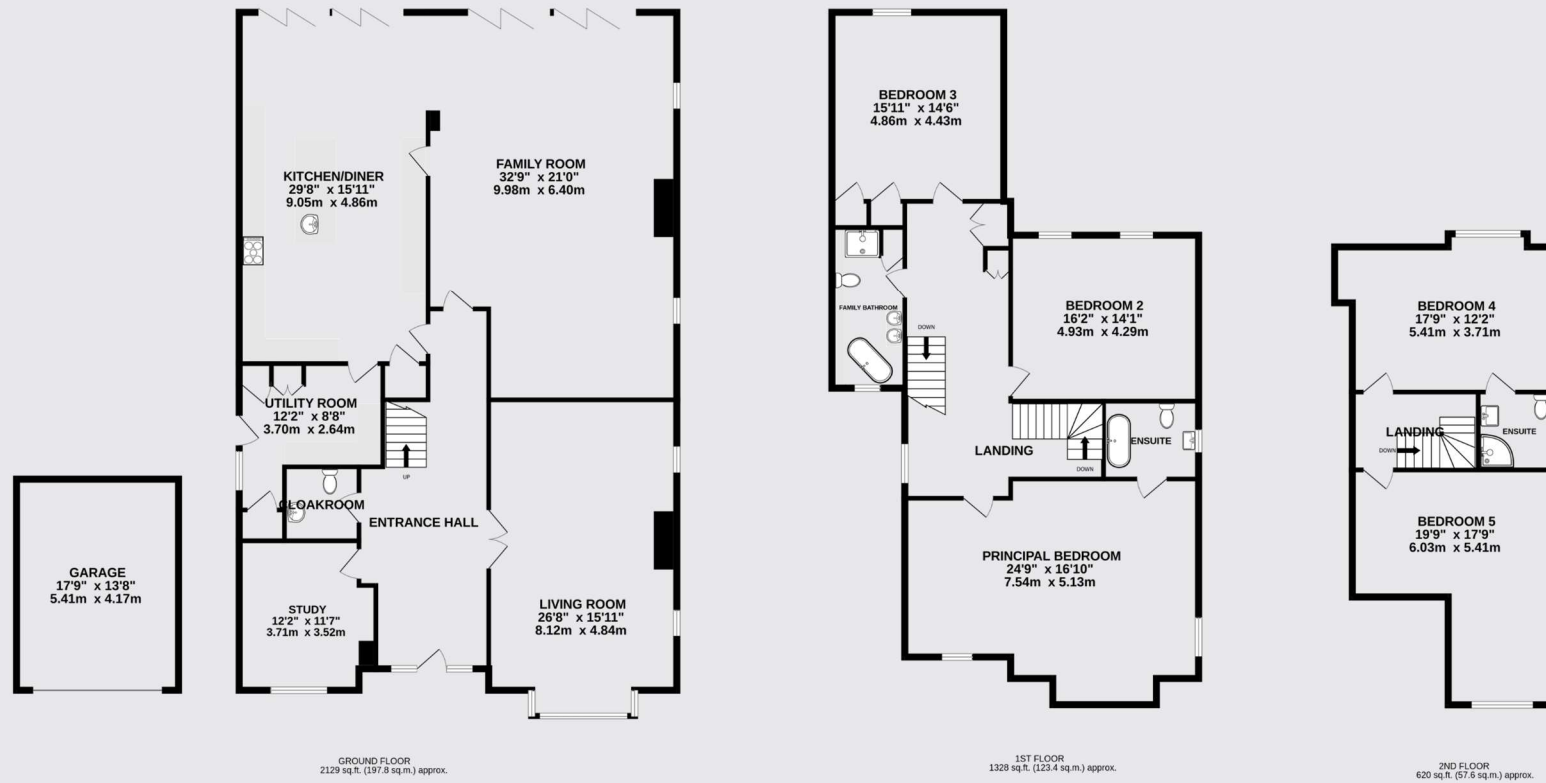
In the centre of St Albans there are a wealth of shops and restaurants catering for every taste.











TOTAL FLOOR AREA : 4078sq.ft. (378.9 sq.m.) approx.

This floor plan is for illustrative purposes only. The measurement and position of each element is approximate and must be viewed as such

**IMPORTANT INFORMATION:**

These particulars do not constitute an offer or contract in whole or part. The statements contained herein are made without responsibility on the part of Ashtons or the vendors and they cannot be relied upon as representatives of fact. In respect of floor plans, these are for illustrative purposes only. The measurement and position of each element is approximate and must be viewed as such. Intending purchasers should therefore satisfy themselves by inspection or otherwise as to their correctness. The vendors do not make or give, and neither Ashtons nor any person in their employment has any authority to make or give, any representation or warranty whatsoever in relation to this property.

We offer a wide range of services through third party providers including solicitors, surveyors, removal firms, mortgage providers and EPC suppliers. We receive additional payments for administering suppliers quoting software and making referrals. You are not under any obligations to use these services and it is your discretion whether you choose to deal with these parties or your own preferred supplier. You should be aware the average payment we received in 2021 equated to £48.36 per referral.



Contact one of our property experts today:

📞 01727 819666 ✉ [thecollection@ashtons.co.uk](mailto:thecollection@ashtons.co.uk) 🌐 [ashtons.co.uk/the-collection](http://ashtons.co.uk/the-collection)

Berkhamsted | Harpenden | Hitchin | Redbourn | St Albans | Welwyn Garden City