

Leonard Close, Paull

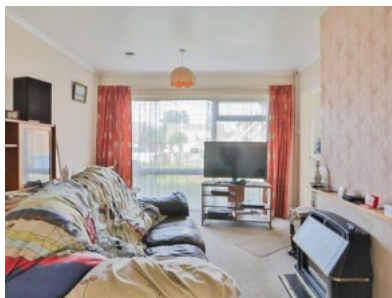
Inviting Offers over £145,000



beercocks
valuing people, not just houses



- ✔ Quiet Cul De Sac Location
- ✔ Fabulous Size Plot
- ✔ Traditional Dormer Bungalow
- ✔ Flexible Accommodation
- ✔ Short Walk To The River Front
- ✔ Close To Village Amenities
- ✔ Surrounding Gardens
- ✔ Off Road Parking And Garage



Bedroom  2 Bathroom  1 Reception  2

Guide Price

£145,000