



Quinn Close | Little Wratting | Haverhill | CB9 7BA

Brand new shared ownership two bedroom property available on the Boyton Place, Haverhill Development with Havebury Housing Partnership. This semi detached property benefits from a fully fitted modern kitchen, flooring throughout and allocated parking for two cars. Price based on a 40% share.

Shared Ownership £108,000

- Brand New
- Shared Ownership
- Two Double Bedrooms
- Semi-Detached
- Allocated Parking For Two Cars
- Downstairs W/C
- No Staircase Restrictions

Approximate Room Sizes

ENTRANCE HALL

KITCHEN 11' 9" x 8' 2" (3.6m x 2.5m) A modern kitchen with a range of base and wall units. Roll edge work surfaces with inset single bowl and drainer sink unit. Extractor fan.

LOUNGE/DINER 15' 8" x 14' 9" (4.8m x 4.5m)

WC

FIRST FLOOR LANDING

BEDROOM 1 15' 8" x 10' 5" (4.8m x 3.2m)

BEDROOM 2 14' 5" x 8' 6" (4.4m x 2.6m)

BATHROOM 6' 10" x 6' 2" (2.1m x 1.9m) White suite comprising of a close coupled wc, pedestal wash hand basin, panelled bath with shower over. radiator and complimentary tiling.

OUTSIDE SPACE The rear gardens commence with a patio area and the remainder laid to lawn. Timber shed and fence. Parking for two cars

Full Price- £270,000

40% share- 108,000

60% Rent- £371.25pcm

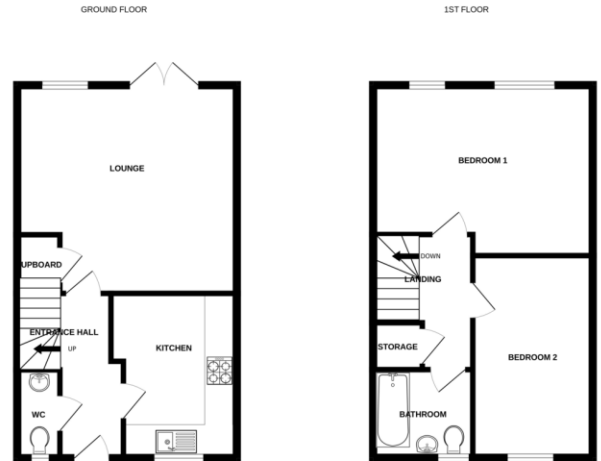
Service Charge- £25.93pcm

Local Authority – West Suffolk Council

Council Tax Band – TBC

Tenure – Leasehold

Post Code – CB9 7BA



Whilst every attempt has been made to ensure the accuracy of the floorplans contained herein, measurements of plans, buildings, rooms and any other items are approximate and no responsibility is taken for any error, omission or misstatement. Third parties for most goods and services will also be advised to check for any specific requirements or conditions. Plans are for guidance only and should not be relied upon for any guarantee as to their accuracy or efficiency can be given. Plans will measure 10/2022



Contact Details

6 The Traverse, Bury St Edmunds, IP33 1BJ

Tel: 01284 769598

Email: burystedmunds@bychoice.co.uk

Agents Note: Whilst every care has been taken to prepare these sales particulars, they are for guidance purposes only. All measurements are approximate and for general guidance purposes only and whilst every care has been taken to ensure their accuracy, they should not be relied upon and potential buyers are advised to check the measurements

