



Albert Road | West Drayton | UB7 8ES

£459,950

A spacious and presentable three bedroom mid terrace home that's exceptionally well placed, only moments from the High Street and train station. The property is offered to the market chain free. The accommodation is split over three floors, upon entry there is a hallway, living room, downstairs cloakroom, dining area that leads to the modern fitted kitchen. To the first floor are the two double bedrooms, study and three piece family bathroom. On the top floor there is the third bedroom and ensuite bathroom. West Drayton is an up and coming area suitable for professionals working in Stockley Business Park and commuters. West Drayton station (Elizabeth Line) is a five-minute walk and has excellent transport connections and is just 22 minutes to Paddington, Central London.



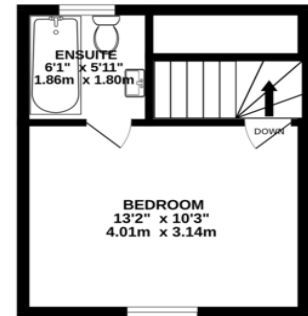
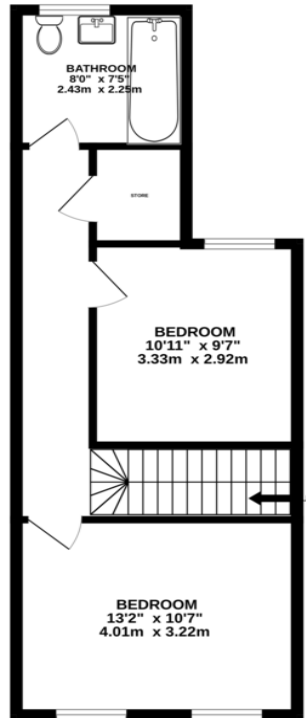
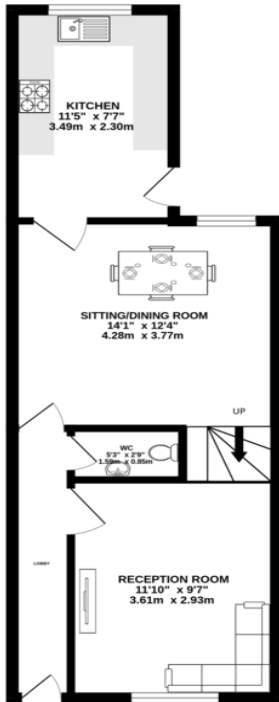
GROUND FLOOR
406 sq.ft. (37.7 sq.m.) approx.



1ST FLOOR
437 sq.ft. (40.6 sq.m.) approx.



LOFT
216 sq.ft. (20.0 sq.m.) approx.



TOTAL FLOOR AREA : 1059 sq.ft. (98.4 sq.m.) approx.

Whilst every attempt has been made to ensure the accuracy of the floorplan contained here, measurements of doors, windows, rooms and any other items are approximate and no responsibility is taken for any error, omission or mis-statement. This plan is for illustrative purposes only and should be used as such by any prospective purchaser. The services, systems and appliances shown have not been tested and no guarantee as to their operability or efficiency can be given.
Made with Metropix ©2023

Contact Details

243 The Broadway

Southall

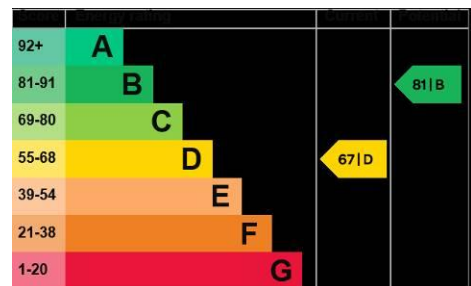
Middlesex

UB1 1NF

www.hiltons-estates.com

Rajneev@hiltons-estates.com

02085741999



Agents Note: Whilst every care has been taken to prepare these sales particulars, they are for guidance purposes only. All measurements are approximate and for general guidance purposes only and whilst every care has been taken to ensure their accuracy, they should not be relied upon and potential buyers are advised to recheck the measurements