



19 Great Winchester Street

London, EC2N 2JA

Self-contained Lower Ground and Ground Fitted Office Suite Available in boutique City office.

1,547 sq ft
(143.72 sq m)

- Self-contained Lower Ground and Ground Floor unit totalling 1,547 sq ft
- Own dedicated entrance directly off of Great Winchester Street
- Good quality fit out in situ
- Abundance of natural light throughout
- Pre-installed fibre
- Showers & secure cycle storage
- EPC Rating - B (40)

- Flexible lease terms available
- Nearest stations: Liverpool Street, Bank & Moorgate

19 Great Winchester Street, London, EC2N 2JA

Summary

Available Size	1,547 sq ft
Rent	£77,500 per annum
Rates Payable	£22.91 per sq ft
Service Charge	TBC
Car Parking	N/A
VAT	Applicable
Legal Fees	Each party to bear their own costs
Estate Charge	N/A
EPC Rating	B (40)

Description

In the centre of the City lies 19 Great Winchester Street, a boutique office building offering a selection of excellent, high-quality office spaces. The building has undergone a thorough renovation to a high standard.

We are offering a unique self-contained Lower Ground and Ground floor office suite that fronts directly onto Great Winchester Street.

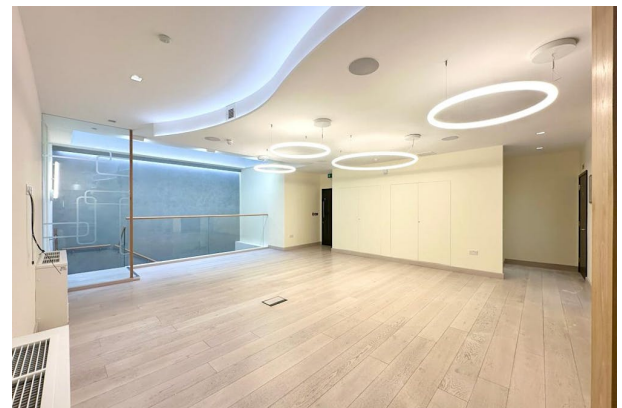
Location

The building benefits from an excellent location in the heart of the City of London. It is well-connected to public transport, with several underground stations and bus stops within easy walking distance. The property is also surrounded by a range of local amenities, including cafes restaurants, shops and bars providing plenty of options for lunch breaks or after-work socialising.

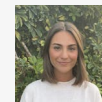
Accommodation

The accommodation comprises the following areas:

Name	sq ft	sq m	Availability
Unit - LG & G	1,547	143.72	Available
Total	1,547	143.72	



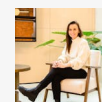
Viewing & Further Information



Mia Solomon

0203 2858 300 | 07835139168

mia@tlg.london



Natalie Lelliott

0203 285 8300 | 07776 388 567

Natalie@tlg.london