



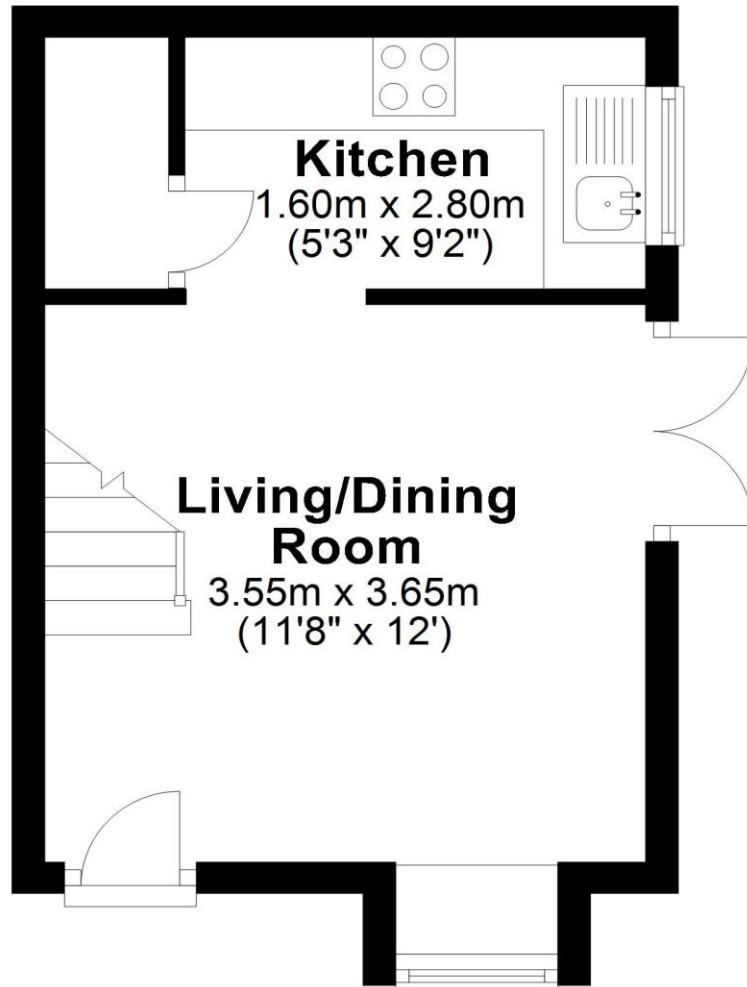
OTTERSHAW

£285,000

Situated in a quiet no through road is this one bedroom house in the delightful village of Ottershaw.

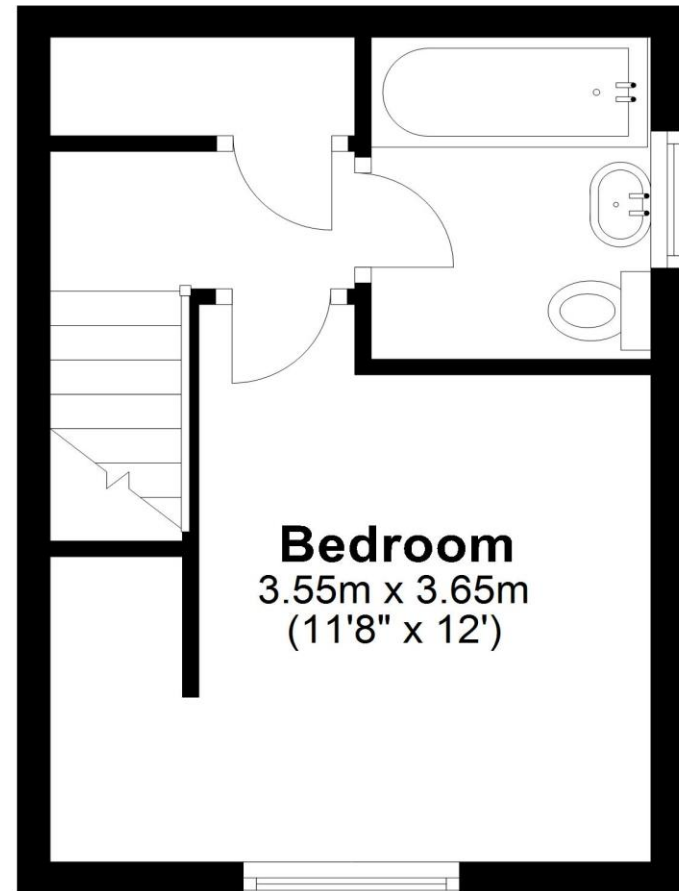
Ground Floor

Approx. 19.8 sq. metres (212.7 sq. feet)



First Floor

Approx. 19.2 sq. metres (206.5 sq. feet)



Total area: approx. 38.9 sq. metres (419.1 sq. feet)

Escott Place, Ottershaw, Chertsey, Surrey, KT16 0HA

- **One Bedroom**
- **Freehold House**
- **Parking For Two Cars**
- **Private Garden**
- **Quiet Location**

Situated in a quiet no through road is this one bedroom house in the delightful village of Ottershaw. The property comprises of a lounge with double doors onto the private garden and kitchen with built in fridge/freezer, space for oven and washing machine. The first floor offers a bathroom with a white fitted suite to include a shower over the bath and an airy double bedroom with storage space.

Externally, the property benefits from off street parking for two cars and a good size garden. Further benefits include double glazed windows and doors, and electric heating.

Ottershaw Village offers restaurants, village hall, garden centre and day-to-day convenience stores, with a wide range of amenities and a choice of schools in Chertsey, Addlestone, Weybridge or Woking, all of which are within easy reach. The area has excellent road and rail connections, including Junction 11 of the M25 about 2.5 miles distant, which has fast links to the M3/M4/M40 motorways, the Channel Tunnel and both London Heathrow and Gatwick airports. There are rail services from Chertsey, Woking and West Byfleet which include fast commuter services into London Waterloo.

Council tax band C

We confirm that these particulars of sale have been prepared as a general guide only and we have not carried out a detailed survey or tested the specified services, equipment and appliances. Room sizes should not be relied upon when ordering carpets, curtains or other furnishings. Photographs are reproduced for general information and it must not be inferred that any item shown is included for sale with the property.



