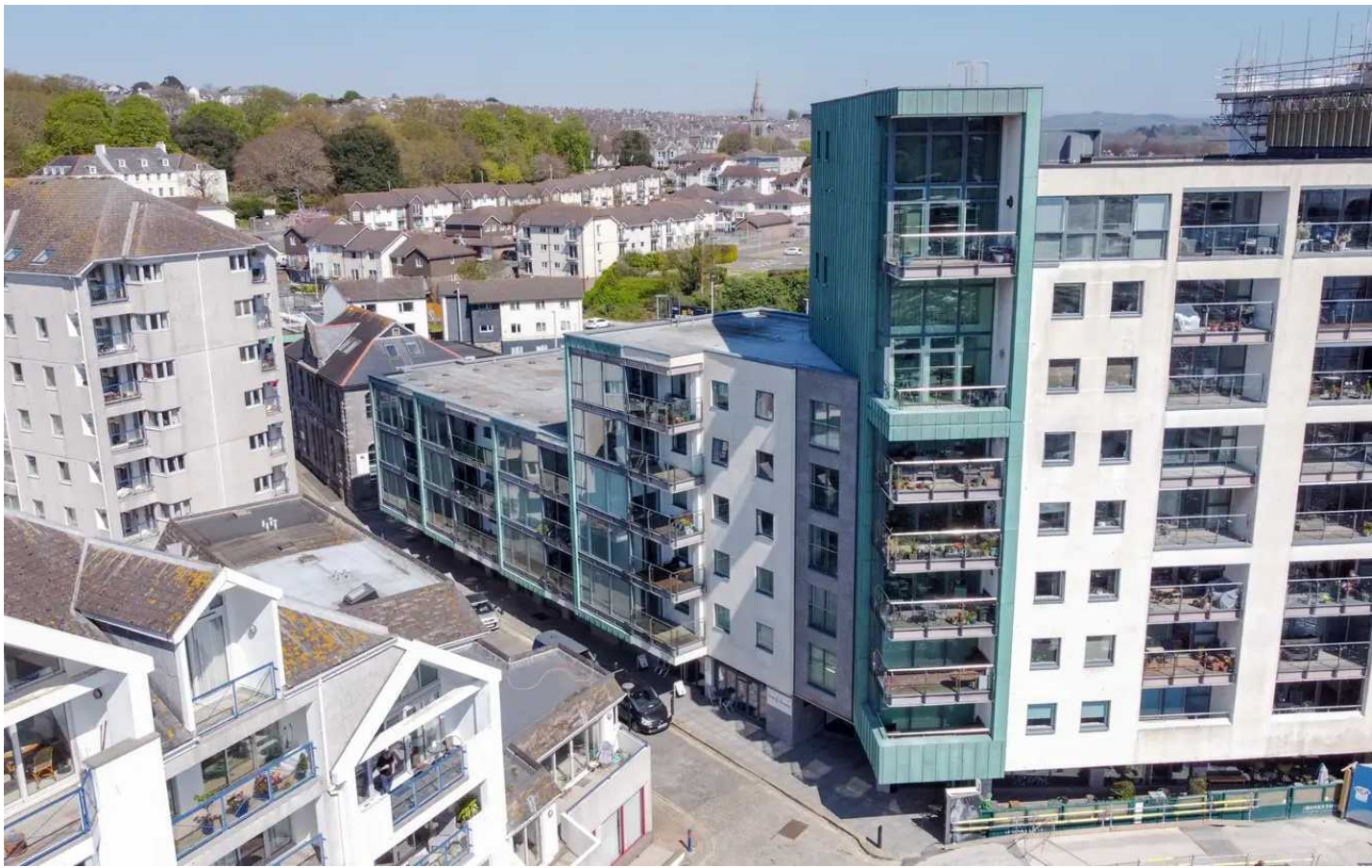




Pinnacle Quay, 4 Harbour Avenue, Plymouth, PL4 0BJ

£260,000 LEASEHOLD





Pinnacle Quay

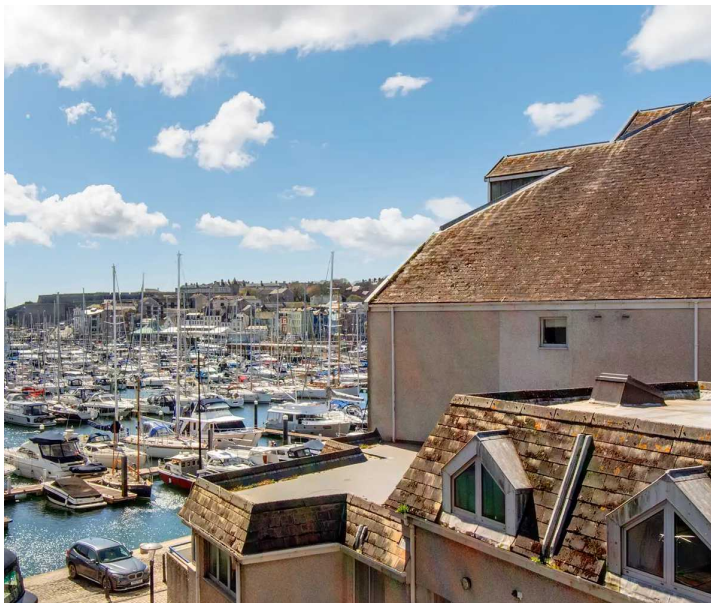
4 Harbour Avenue, Plymouth, PL4 0BJ

Third floor apartment with west facing balcony, with views over the city & Sutton Harbour. Needing some modernisation, with large open plan living space, two double bedroom, main en-suite & secure gated allocated parking. No onward chain.

Council Tax band: D

Tenure: Leasehold

- Third Floor Purpose Built Apartment
- Large Open Plan Living Space
- Main En-Suite
- Complementary Bathroom
- Secure Gated Allocated Parking
- Ample Storage
- West Facing Balcony
- Long Lease



Pinnacle Quay

4 Harbour Avenue, Plymouth, PL4 0BJ

Discover the ultimate urban seaside lifestyle you've been dreaming of with this fantastic third-floor apartment in Pinnacle Quay.

As you step inside, you'll be immediately impressed by the large open plan living space, complete with floor-to-ceiling windows that offer unparalleled views over Sutton Harbour. The west-facing balcony is the perfect spot to relax with a coffee or enjoy al fresco dining while taking in the stunning sight of sunsets over the harbour.

The apartment also boasts a large kitchen with integral appliances and ample storage space, perfect for those who love to cook and entertain. There are two double bedrooms, one of which is a main bedroom suite that features a fitted wardrobe and en-suite shower room. The complementary bathroom and lift access add functionality to the apartment, making it ideal for anyone looking for a convenient and easy-living lifestyle.

Pinnacle Quay's exceptional location is what really sets this property apart. Situated in the heart of the historic city of Plymouth, you're just a stone's throw away from some of the best beaches and parks in the area, providing ample opportunities to enjoy a wide variety of water-based activities. This stunning waterfront property offers panoramic views of the harbour, perfect for those who love spending their days by the sea.



Pinnacle Quay

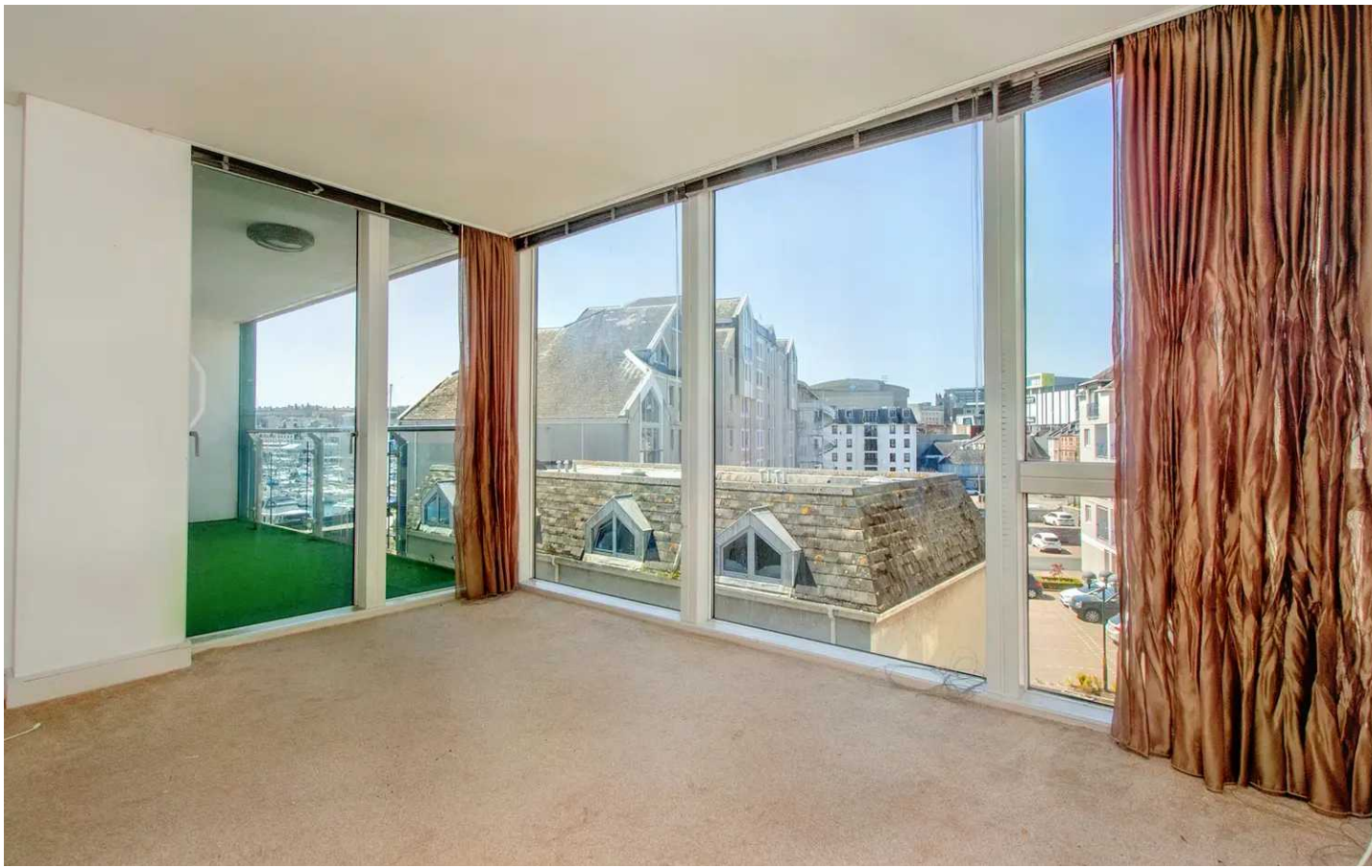
4 Harbour Avenue, Plymouth, PL4 0BJ

You'll also enjoy easy access to the city's best restaurants, shops, and cultural attractions, making it the perfect place for professionals, retirees, and anyone who loves the pulse of city life.

This fantastic apartment requires some modernisation, but it is offered with no onward chain. It's the perfect blank canvas for anyone looking to customise their living space to suit their unique style and preferences.

In conclusion, this third-floor apartment at Pinnacle Quay is the perfect place for anyone looking to experience the best of both urban and waterside living.





BALCONY

Secure Gated

1 Parking Space

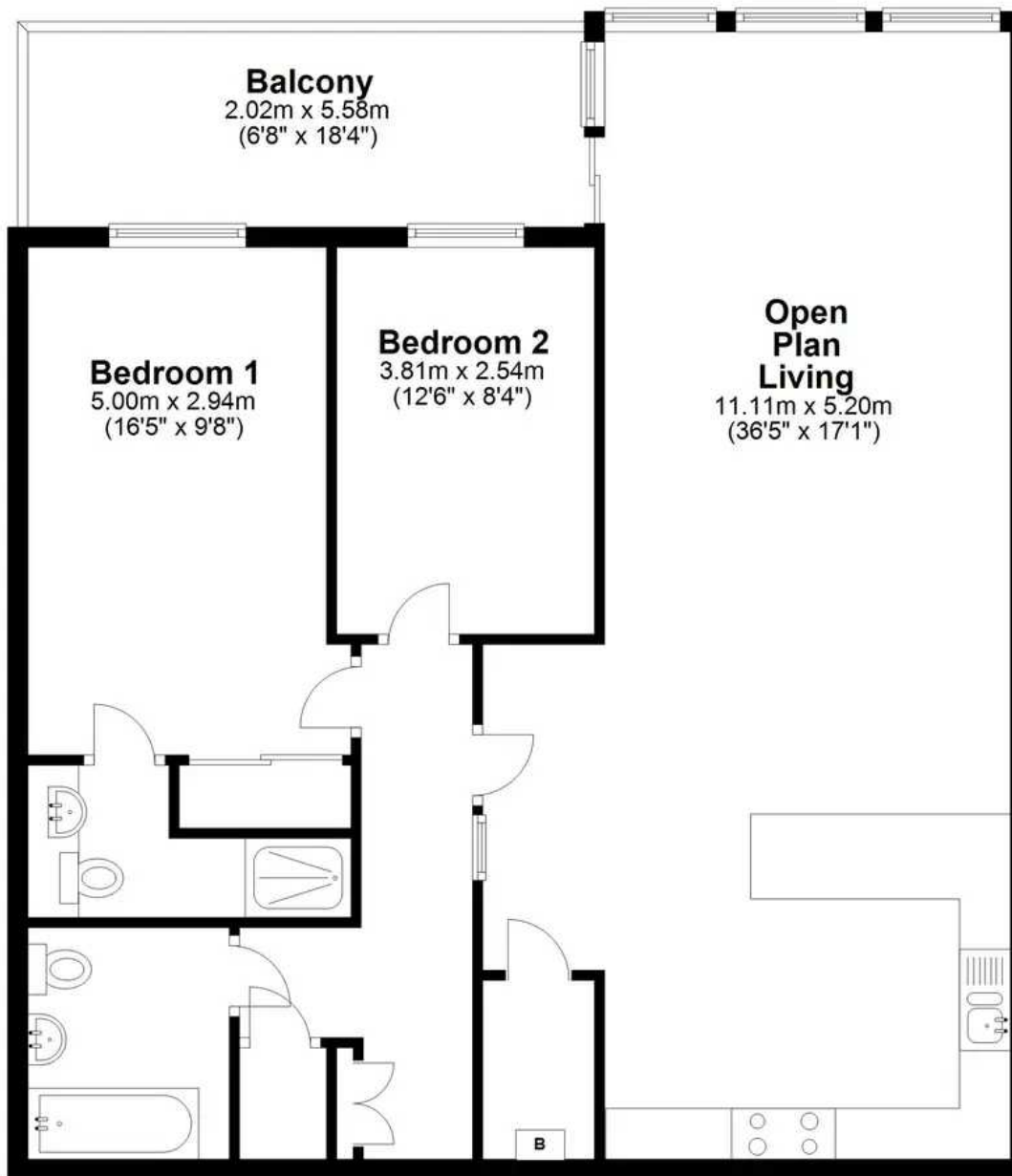
Tenure: Leasehold

Council Tax band: D



Third Floor

Approx. 95.4 sq. metres (1026.5 sq. feet)



Total area: approx. 95.4 sq. metres (1026.5 sq. feet)

Pinnacle Quay, Sutton Harbour, Plymouth



Atwell Martin

Atwell Martin, 65 Southside Street – PL1 2LA

01752 202121

plymouthsales@atwell-martin.co.uk

plymouth.atwellmartin.co.uk/

Atwell Martin Plymouth endeavour to ensure the accuracy of property details produced and displayed. Please note that we have not tested any apparatus, equipment, fixtures, fittings or services and so cannot verify that they are connected, in working order or fit for purpose. It is imperative that the buyer of any property makes such checks, prior to purchase so as to satisfy themselves of the properties suitability for their purchase. .