



Chamberlin Court, Blofield - NR13 4JF



Chamberlin Court

Blofield, Norwich

Occupying a CUL-DE-SAC location, this END-TERRACE HOME offers a SOUTH FACING GARDEN, EN-BLOC GARAGE and ample OFF ROAD PARKING. Finished with uPVC double glazing, gas fired CENTRAL HEATING and a neutral décor, the accommodation comprises a hall entrance, MODERN FITTED KITCHEN with NEFF 'SLIDE and HIDE' PYROLYTIC OVEN and BOSCH ELECTRIC HOB, conservatory and SITTING/DINING ROOM to the ground floor. The first floor offers TWO DOUBLE BEDROOMS - one with BUILT-IN STORAGE, family bathroom and access to a LOFT/CRAFT ROOM which has built-in storage and velux windows to front and rear.

Council Tax band: B

Tenure: Freehold

EPC Energy Efficiency Rating: C

EPC Environmental Impact Rating: D

- Popular Residential Location
- End-Terrace Home
- Sitting/Dining Room
- Modern Fitted Kitchen
- Conservatory
- Two Double Bedrooms
- Loft Storage Room
- Enclosed Gardens & Garage



The Broadland Village of Blofield is situated East of the Cathedral City of Norwich. The Village provides good transport links via both the Brundall and Lingwood railway stations along with regular buses travelling to both Norwich and Great Yarmouth. The Village itself offers a wide range of amenities including a village school boasting an Outstanding Ofsted rating, local shops, garden centre and a public house. Blofield is conveniently located close to the Norfolk Broads and its extensive range of Leisure and Boating activities.

SETTING THE SCENE

A lawned front garden with a footpath and adjacent shingled bed leads to the main entrance. To the left of the property an arch opening leads to the parking and en-bloc garage.

THE GRAND TOUR

Once inside, a porch entrance offers a wood effect flooring, whilst there is space for coats and shoes. A door opens to the sitting/dining room, with newly fitted carpet, stairs to the first floor and useful storage space under the stairs. A door opens to the kitchen where you find a re-fitted range of wall and base level units, with an inset electric ceramic hob, built-in eye level Neff slide and hide pyrolytic oven, and space for a fridge freezer and washing machine. The wall mounted gas fired central heating boiler is tucked away to one corner. A door opens to the useful conservatory, with tiled flooring, and ample space for sitting or as a utility space. Heading upstairs, two double bedrooms are finished with fitted carpet, with the front main bedroom including a build-in storage cupboard.





Chamberlin Court

Blofield, Norwich

The family bathroom offers a three piece suite with a shower over the bath. From the landing a large loft hatch with pull down ladder leads to a useful loft storage room which has been used as a study space.

FIND US

Postcode : NR13 4JF

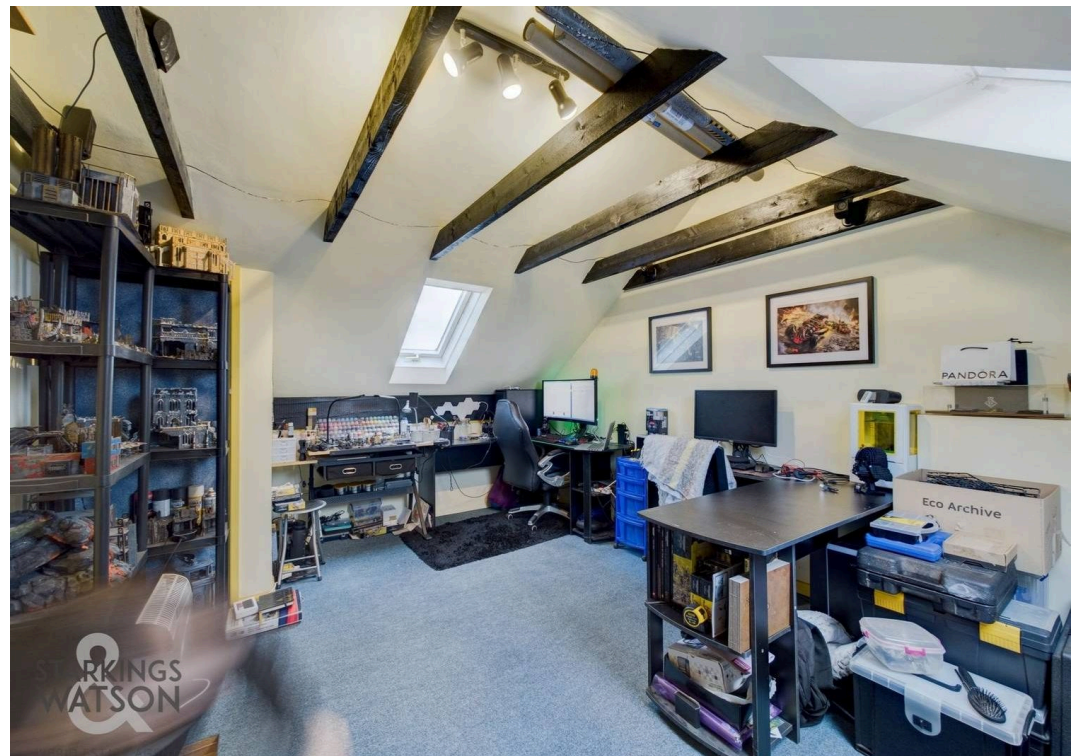
What3Words : ///square.loitering.pins

VIRTUAL TOUR

View our virtual tour for a full 360 degree of the interior of the property.

**STARKINGS
&
WATSON**

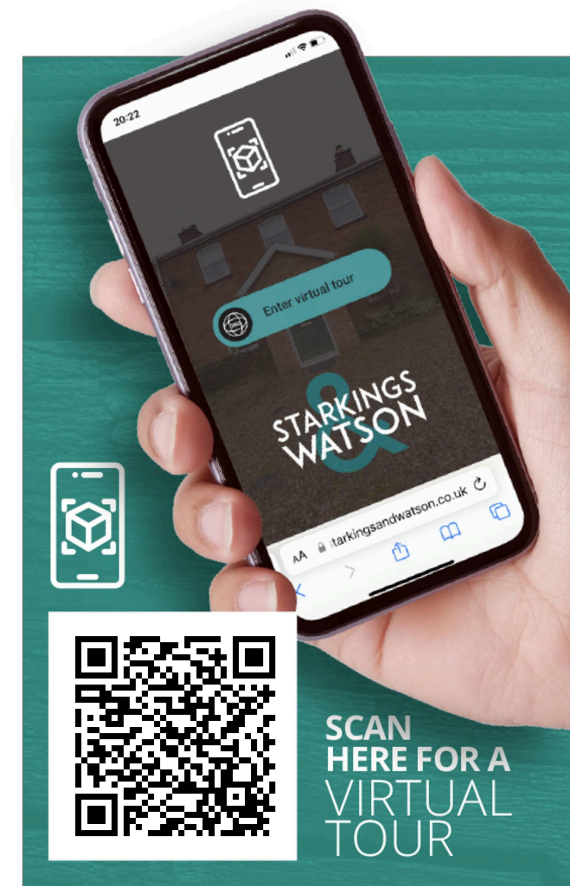
HYBRID ESTATE AGENTS



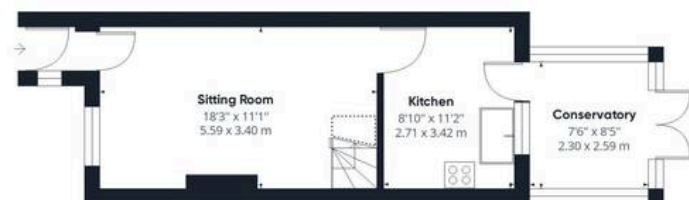


THE GREAT OUTDOORS

The rear garden is a great space, laid to lawn and enclosed with timber fenced boundaries. Both side boundaries include planted borders, whilst a timber shed offers storage, and a patio extends from the conservatory. A gated side access leads to front, where you can walk to the en-bloc garage.



SCAN
HERE FOR A
VIRTUAL
TOUR



Ground Floor



Floor 1



Floor 2

Approximate total area⁽¹⁾

835.55 ft²

77.63 m²

Reduced headroom

38.15 ft²

3.54 m²

(1) Excluding balconies and terraces

 Reduced headroom
(below 1.5m/4.92ft)

While every attempt has been made to ensure accuracy, all measurements are approximate, not to scale. This floor plan is for illustrative purposes only.

GIRAFFE360



Starkings & Watson Hybrid Estate Agents

2 Cucumber Lane, Brundall - NR13 5QY

01603 336556 • brundall@starkingsandwatson.co.uk • <http://starkingsandwatson.co.uk>

Disclaimer: Whilst every care has been taken to prepare these sales particulars, they are for guidance purposes only. All measurements are approximate and are for general guidance purposes only and whilst every care has been taken to ensure their accuracy, they should not be relied upon and potential buyers are advised to recheck the measurements.