

Love Homes



Oak Tree Road, Ampthill, MK45 2UH

With a fantastic cul-de-sac position, you'll be able to enjoy being close to the countryside while still being close to all the conveniences of town. Step inside to discover an inviting entrance hall leading to the fitted kitchen, extended L-shaped living/dining room, with two generous bedrooms and a white bathroom suite. Outside you get a driveway providing off road parking and a carport plus gardens to the front and rear.



This property is presented by Stuart Scott - a Love Homes property expert with over 25 years' experience.

Find out more about this property by scanning the QR code.



2.3m



2



1



1

Tenure: Freehold Council Tax Band:C

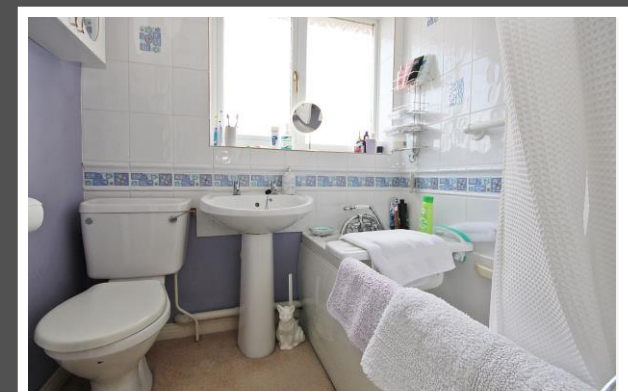
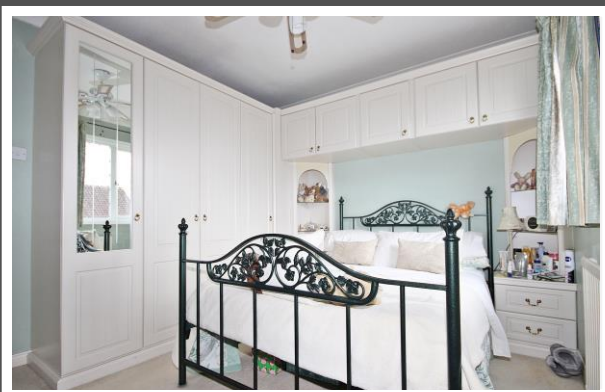




"We love the extension and how flexible it allows the ground floor to be. This extra room could be a dining room, home office, family room or a garden room to enjoy the garden from."

The main bedroom has lots of storage while the second bedroom is still a good size room for either guest or children.

The off-road parking is great with space for two and potentially three cars and one can be under cover in the car port for added protection from the weather.





TOTAL FLOOR AREA: 578 sq.ft. (53.7 sq.m.) approx.
Drawn by Love Homes for illustrative purposes only. Measurements and areas shown are approximate. Made with Metropix ©2023

Score	Energy rating	Current	Potential
92+	A		
81-91	B		87 B
69-80	C	69 C	
55-68	D		
39-54	E		
21-38	F		
1-20	G		



These particulars are set out as a general outline in accordance with the Property Misdescriptions Act (1991) only for the guidance of intending purchasers or lessees, and do not constitute any part of an offer or contract. Details are given without any responsibility, and any intending purchasers, lessees or third parties should not rely on them as statements or representations of fact but must satisfy themselves by inspection or otherwise as to the correctness of each of them. We have not carried out a structural survey and the services, appliances and specific fittings have not been tested. All photographs, measurements, floor plans and distances referred to are given as a guide only and should not be relied upon for the purchase of carpets or any other fixtures or fittings. Gardens, roof terraces, balconies and communal gardens as well as tenure and lease details cannot have their accuracy guaranteed for intending purchasers. Lease details, service ground rent (where applicable) are given as a guide only and should be checked and confirmed by your solicitor prior to exchange of contracts. No person in the employment of Love Homes has any authority to make any representation or warranty whatever in relation to this property. Purchase prices, rents or other prices quoted are correct at the date of publication and, unless otherwise stated, are exclusive of VAT. We retain the copyright in all advertising material used to market this Property. All information is as advised by the seller and subject to change. Council tax bands can be subject to change by the local council.

5 The Russell Centre, Coniston Road, Flitwick, MK45 1QY
 Tel: 01525 713111

Email: flitwick@lovehomes.uk

www.lovehomes.uk



Love Homes