



184 Hawthorn Road
£550 pcm



LENNON
PROPERTIES
SALES | LETTINGS | MANAGEMENT | COMMERCIAL



184 Hawthorn Road

Lennon Properties are pleased to welcome to the market this spacious three bedroom mid-terraced house situated on Hawthorn Road, Ashington. Close to town centre, local amenities, schools and transport links. Accommodation internal briefly comprises; entrance, lounge, open plan kitchen/diner. To the first floor three bedrooms and bathroom. Externally there is small garden to the front and large private yard to the rear. The property is available now! To arrange your viewing please call our office.



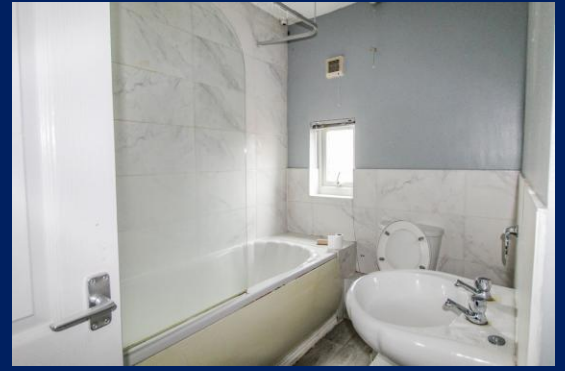
LOUNGE 13' 1" x 14' 0" (3.99m x 4.27m)

KITCHEN/DINER 12' 7" x 14' 2" (3.86m x 4.32m)

BEDROOM ONE 13' 3" x 9' 10" (4.04m x 3.00m)

BEDROOM TWO 8' 9" x 14' 4" (2.69m x 4.39m)

BEDROOM THREE 10' 2" x 9' 10" (3.10m x 3.00m)



These particulars are intended to give a fair and reliable description of the property but no responsibility for any inaccuracy or error can be accepted and do not constitute an offer or contract. We have not tested any services or appliances (including central heating if fitted) referred to in these particulars and the purchasers are advised to satisfy themselves as to the working order and condition. If a property is unoccupied at any time there may be reconnection charges for any switched off / disconnected or drained services or appliances – All measurements are approximate. MONEY LAUNDERING REGULATIONS 2003 intending purchasers will be asked to produce identification and proof of financial status when an offer is received. We would ask for your co-operation in order that there will be no delay in agreeing the sale.

9 Regent Street, Blyth, NE24 1LQ

01670 719600

Email: blyth@lennonproperties.co.uk

www.lennonproperties.co.uk

