



Braeburn Crescent, Ecclestone

PR7 5FL

£550,000



A fantastic detached property on a corner plot in a quiet cul de sac location, offering over 2,600 square feet of accommodation over three floors, six bedrooms of which three have en suite, stunning master suite and delightful views to the rear.

To the front the driveway can accommodate several vehicles and leads to the main entrance. Step into the entrance hallway which gives on to all ground floor accommodation. To the rear the living room has French windows overlooking the garden and media wall, to the front the bay fronted dining room has door opening to the wonderful breakfast kitchen comprising a range of wall and base units with silestone work surfaces, etched drainer and boiler tap, induction hob, eye level oven with warming drawer, multi oven, dishwasher, washing machine and full height refrigerator and freezer. Completing the ground floor are the gymnasium and cloakroom comprising wash hand basin and wc.



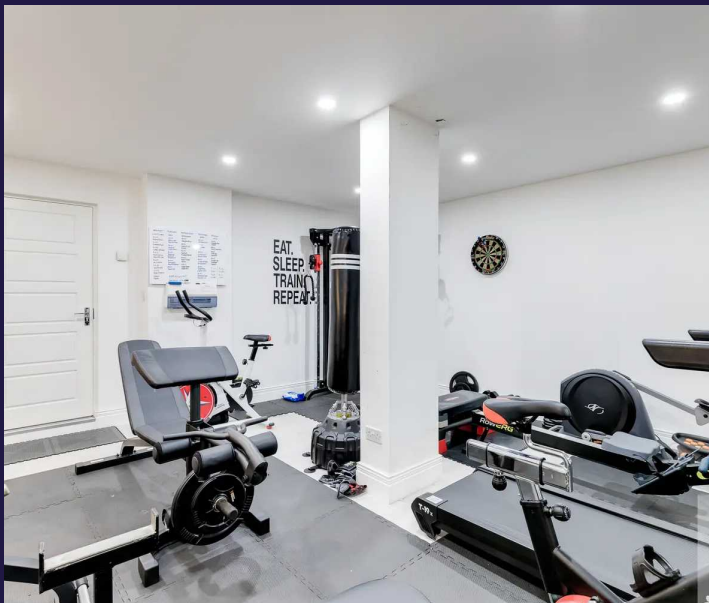
Externally the garden is designed and built for relaxation and entertainment with two sun terraces, lawn, power supply for hot tub and beautiful views across fields and trees.



Back inside, carpeted stairs lead to the first floor landing with bedrooms two and three having en suite facilities and bedroom six currently being used as an office and bedroom five as a cinema room. The family bathroom comprises bath with shower attachment, wc, wash hand basin on floating vanity unit and ladder heated towel rail.

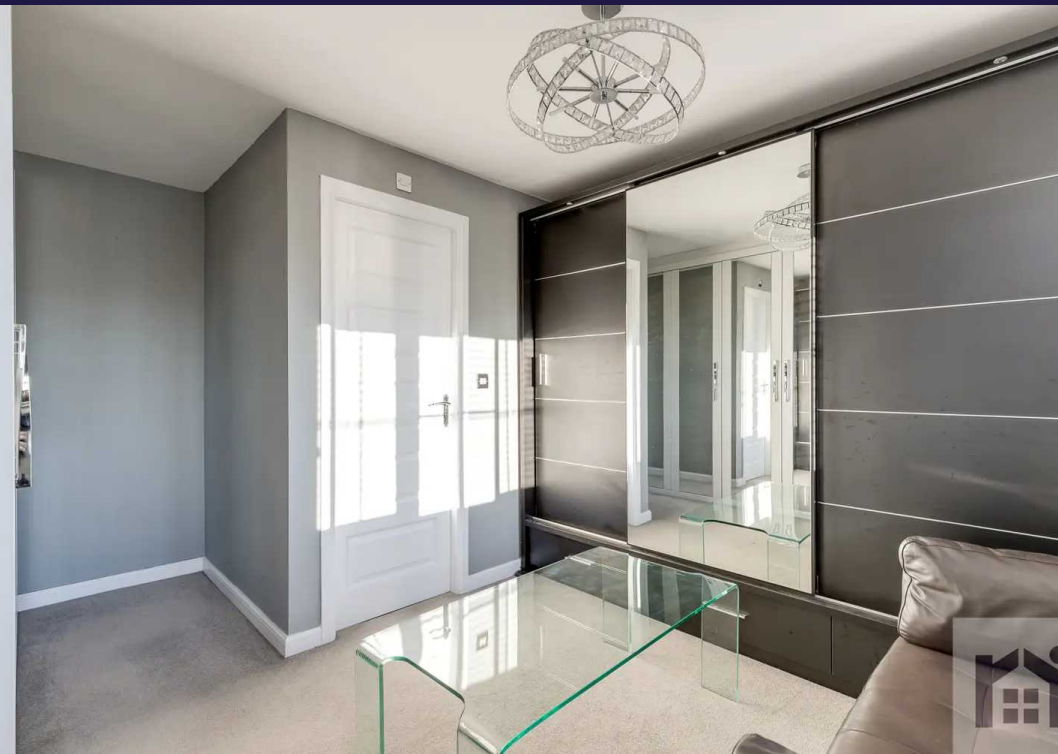
The second floor is given over completely to the master suite with spacious bedroom and first class dressing room both benefiting from split level skylights which open into a Juliette type balcony area. The en suite comprises mixer shower in cubicle, wc, ladder heated towel rail and wash hand basin on floating vanity unit.

Close to primary transport routes, countryside walks and village amenities, and in the catchment area for excellent schools this is a first class family home.









A fantastic detached property on a corner plot in a quiet cul de sac location, offering over 2,600 square feet of accommodation over three floors, six bedrooms of which three have en suite, stunning master suite and delightful views to the rear. Council Tax band: F

Tenure: Leasehold

- Six bedrooms
- Three en suite
- Beautiful master suite
- Stunning views
- Private and spacious garden
- Media tour



Eccleston Branch

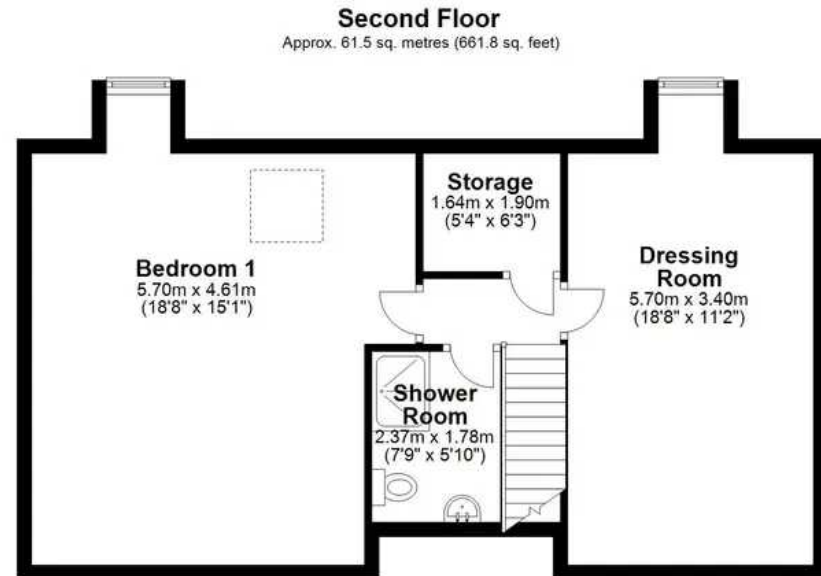
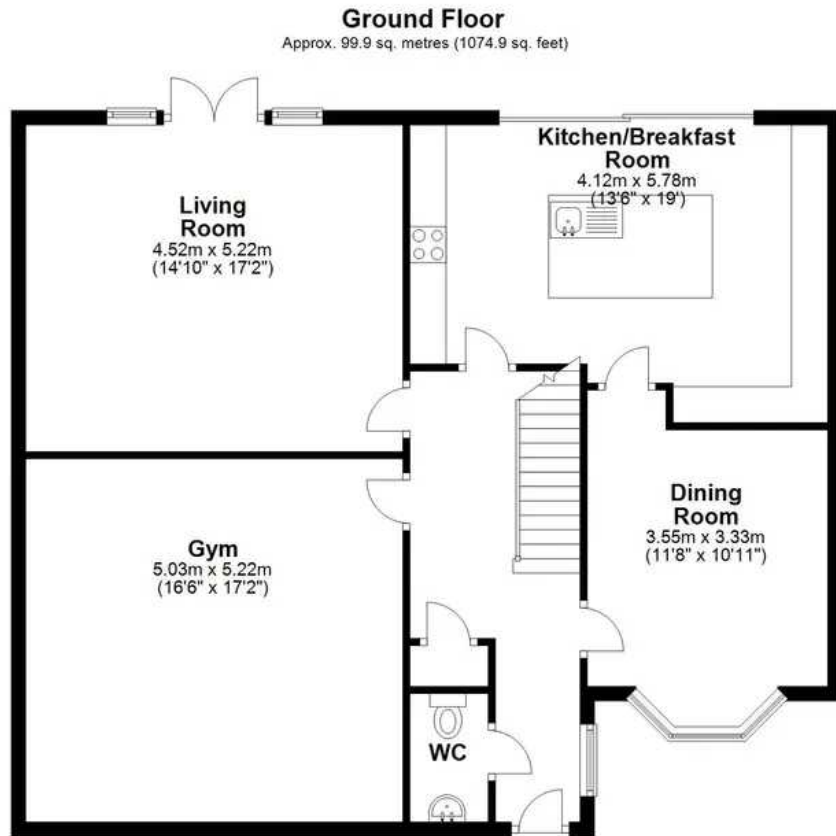
265 The Green, Eccleston, PR7 5TF
01257 451673

Coppull Branch

244 Spendmore Lane, Coppull, PR7 5DE
01257 794588

www.hometruthslancs.co.uk
office@hometruthslancs.co.uk





Total area: approx. 246.9 sq. metres (2657.6 sq. feet)

THIS FLOOR PLAN IS FOR ILLUSTRATION ONLY AND IS NOT A SCALE DRAWING. SQFT IS AN APPROXIMATE GUIDE
Plan produced using PlanUp.