

FOR SALE



Langley Green, Crawley
Offers In Excess Of £335,000

MARTIN&CO

Langley Green, Crawley

Offers In Excess Of £335,000

- 3 Bedroom End of Terrace Family Home
- Updated Kitchen and Bathroom
- Convenient Location
- Scope for improvement
- Large Mature Gardens

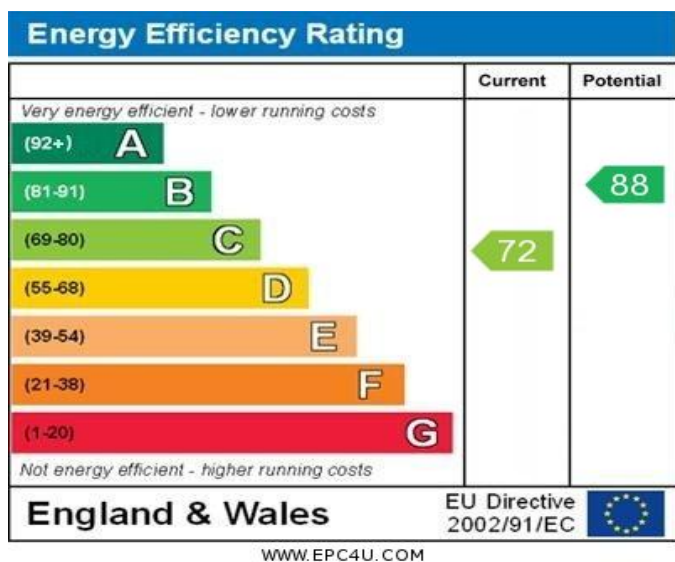
3-Bedroom end of terrace family home boasting picturesque mature gardens with a southerly aspect.

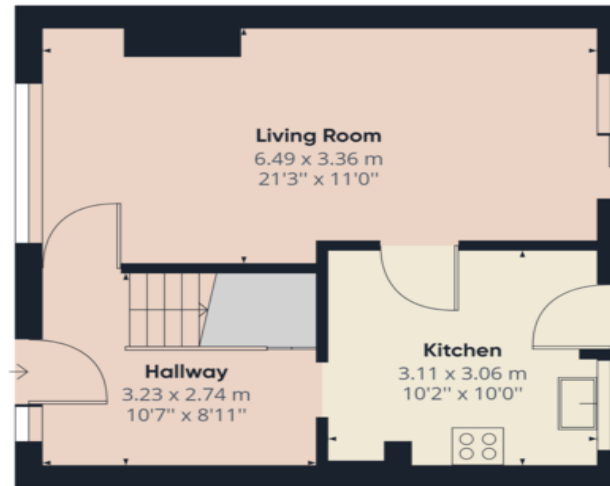
Potential for modernisation to give it your own personal touch.

Offers are invited in excess of £335,000 for this 3-bedroom end of terrace family home which is conveniently located in the popular area of Langley Green. The property boasts picturesque and mature gardens with a southerly aspect and offers ample natural light throughout, creating a warm and inviting atmosphere. With spacious living areas and bedrooms, this home provides plenty of space for comfortable family living. Internally the property offers a utility/storeroom, a good sized and updated kitchen with ample base and wall units with a door leading to the patio

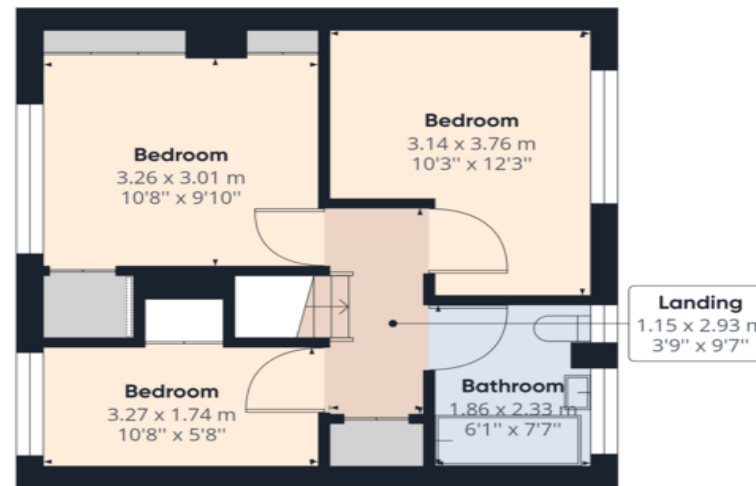


area of the rear garden, a spacious lounge/dining room with stone fire surround and patio doors. Upstairs there are 2 double bedrooms and a further single with in-built wardrobe and storage cupboard to 2 of the rooms. The family bathroom is comprised of a white suite with a low-level w.c, wash hand basin and electric shower over the bath and shower screen. Beyond the interior lies an excellent opportunity to enhance the property with potential for modernisation to giving I your own personal touch. The generous sized garden provides the perfect retreat for those who enjoy outdoor living and entertainment. This property offers the perfect combination of convenience and potential, making it an ideal family home.





Ground Floor



Floor 1



Approximate total area⁽¹⁾

76.13 m²
819.47 ft²

(1) Excluding balconies and terraces

While every attempt has been made to ensure accuracy, all measurements are approximate, not to scale. This floor plan is for illustrative purposes only.

GIRAFFE360

Martin & Co Crawley

3 Brittingham House • Orchard Street • Crawley • RH11 7AE
T: 01293 735000 • E: crawley@martinco.com

01293 735000

<http://www.martinco.com>



Accuracy: References to the Tenure of a Property are based on information supplied by the Seller. The Agent has not had sight of the title documents. A Buyer is advised to obtain verification from their Solicitor. Items shown in photographs including but not limited to carpets, fixtures and fittings are not included unless specifically mentioned within the sales particulars. They may however be available by separate negotiation. Buyers must check the availability of any property and make an appointment to view before embarking on any journey to see a property. No person in the employment of the agent has any authority to make any representation about the property, and accordingly any information given is entirely without responsibility on the part of the agents, sellers(s) or lessors(s). Any property particulars are not an offer or contract, nor form part of one. **Sonic / Laser Tape:** Measurements taken using a sonic / laser tape measure may be subject to a small margin of error. **All Measurements:** All Measurements are Approximate. **Services Not tested:** The Agent has not tested any apparatus, equipment, fixtures and fittings or services and so cannot verify that they are in working order or fit for the purpose. A Buyer is advised to obtain verification from their Solicitor or Surveyor.