

# 18 CROWTHERS HILL, DARTMOUTH



THE COASTAL HOUSE  
ESTATE AGENTS

The pretty terraced houses on Crowther's Hill have always been popular. So close to the centre of vibrant Dartmouth, yet the elevated position grants glorious views from the rear of these Victorian townhouses. We access number 18 through a traditional black wooden door and into a great entryway. Stretching the depth of the house and giving access to the rear of the property, there is abundant storage, a WC and a utility room off this space. The first room to the right is a good size kitchen. The dark shaker cabinetry is contrasted by bright worktops, walls and flooring. Drift through to the open plan dining / living room with built-in bookcases and large sliding doors providing great light into this space as well as allowing access to the large decked area. Outside now, there is more than meets the eye. Spectacular, panoramic views greet us - across Dartmouth town, down to the river and the green fields of Kingswear beyond but there is more... Wooden steps lead down to a good size garden, housing a shed and a garden room.





Climb the stairs to the first floor where we find the first two double bedrooms and the fully tiled family bathroom. The first bedroom has built-in shelving in the alcoves, the second has clever built-in wardrobes and fantastic, panoramic views.





Wind upstairs now to the second floor and a wonderful master suite is situated in the roof space. Exposed beams add great character to this spacious boudoir and dormer windows each side give different aspects of the river as well as flooding the space with light. A stylish en-suite shower room and ample storage make for a glorious sanctuary.



# About... Dartmouth



## Beaches:

Sugary Cove, Blackpool Sands, Strete Gate



## Cinema:

Flavel Dartmouth. Merlin Kingsbridge



## Theatre:

The Flavel, Dartmouth.



## Restaurants:

The Seahorse, Kendricks, The Angel, Rosa



## Watersports:

The Paddle Shack, Sea Kayak Devon



## Supermarkets:

Market, Sainsbury's, Lidl, Co-op, M&S



## Schools:

Dartmouth Academy, St Johns



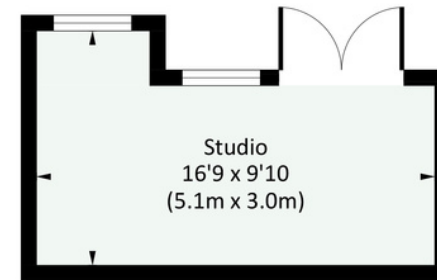
## Sports:

Fusion: Dartmouth Leisure Centre

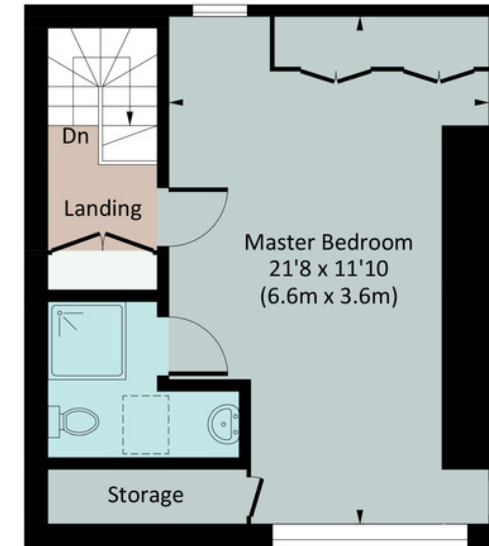


## 18 CROWTHERS HILL

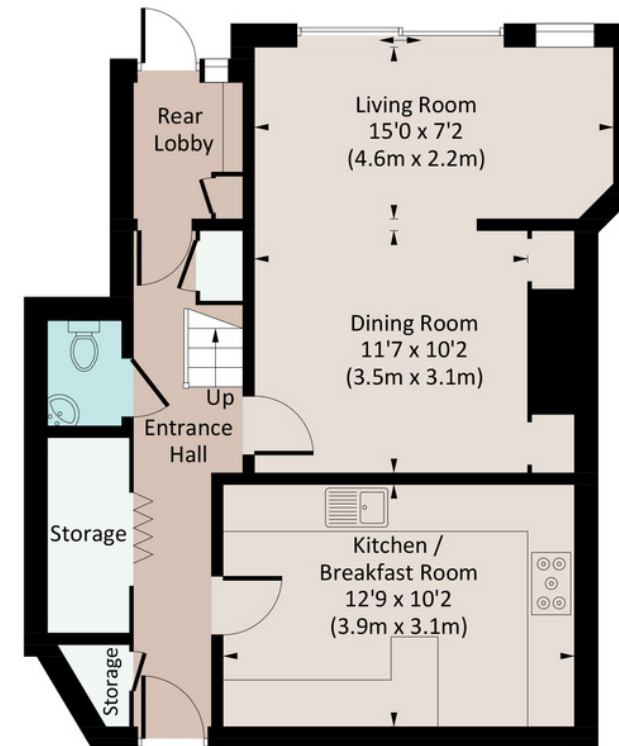
Approx. gross internal area  
1426.5 Sq Ft. / 132.5 Sq M.



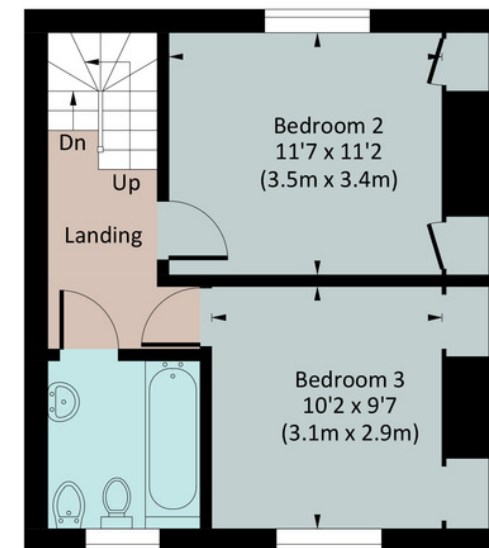
(Not Shown In Actual Location / Orientation)



SECOND FLOOR



GROUND FLOOR



FIRST FLOOR

Illustration for identification purposes only, measurements are approximate, not to scale. floorplansUsketch.com © (ID944205)

# The Little Details...

- Spacious three Bedroom Townhouse
  - Sought-after Central Location
  - Private Terrace & Garden
- Sensational Town & River Views
  - Characterful features
  - EPC Band D
  - Council Tax Band E
- Totnes & trains to London - 14 miles



breeze.answers.roost



THE COASTAL HOUSE  
ESTATE AGENTS



Electric Cooker



Gas



Mains water & drainage



Terrace and Garden