



Tudor Lodge, Lock Avenue, Maidenhead, Berkshire SL6 8JW

**TUDOR LODGE, LOCK AVENUE
MAIDENHEAD
BERKSHIRE SL6 8JW**

**GUIDE PRICE: £1,500,000
FREEHOLD**

An attractive four-bedroom detached character property sitting on a plot of approximately two thirds of an acre at the end of a cul-de-sac in one of Maidenhead's most desirable locations close to the Thames at Boulters Lock. Now in need of some internal modernisation, this substantial property offers great scope to extend or re-build giving potential buyers an opportunity to create a dream home subject to the necessary planning consents. The property currently features three reception rooms, generous kitchen, utility room, master bedroom with en-suite, stunning extensive gardens with summer house and swimming pool, workshop and driveway for ten plus cars with a detached double garage. This rarely available property is within easy reach of Maidenhead town centre and railway station (Elizabeth Line).

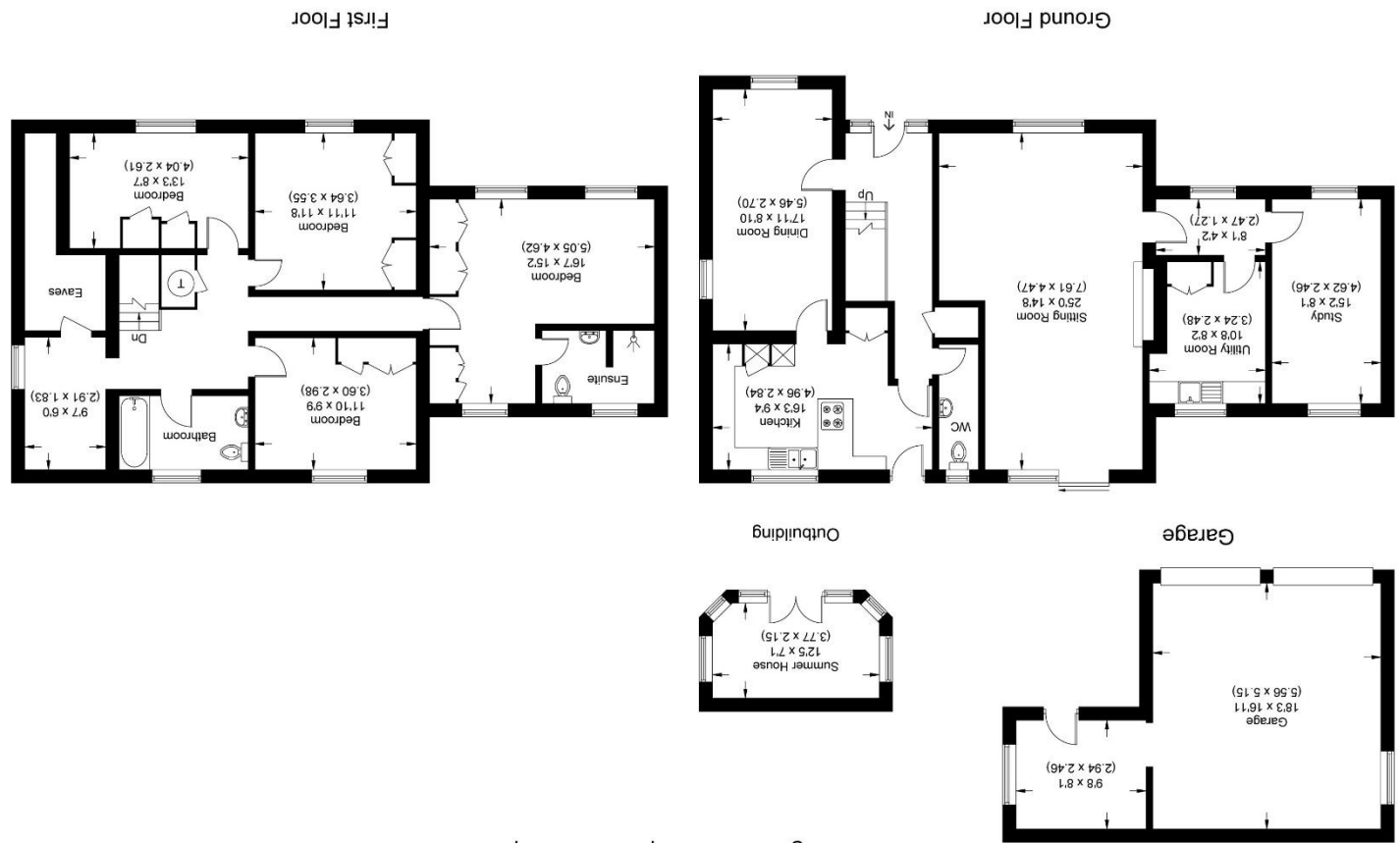
***DETACHED CHARACTER PROPERTY *QUIET
CUL-DE-SAC *EASY REACH OF TOWN &
STATION *LARGE PLOT OF CIRCA TWO
THIRDS OF AN ACRE *FOUR BEDROOMS
*FAMILY BATHROOM & EN-SUITE *THREE
RECEPTION ROOMS *DETACHED DOUBLE
GARAGE *PARKING FOR SEVERAL VEHICLES
*STUNNING GARDENS WITH SWIMMING
POOL *SOUGHT AFTER RIVER AREA *EASY
REACH OF TOWN & STATION *EPC RATING D**





For clarification we wish to inform prospective purchasers that we have prepared these sales particulars as a general guide. We have not carried out a detailed survey nor tested the services, appliances and specific fittings. Room sizes should not be relied upon for carpets, furnishings and appliances. Whilst these particulars are believed to be correct their accuracy is not guaranteed and are given without responsibility. They do not form part of any contract.

Illustration for identification purposes only, measurements are approximate, not to scale.



Approximate Gross Internal Area 186.63 sq m / 2008.86 sq ft
 (Excluding Garage & Outbuilding & Eaves)
 Garage Area 36.24 sq m / 390.08 sq ft
 Outbuilding Area 7.90 sq m / 85.03 sq ft



Lock Avenue