



Rayners Franklyns, Plymouth, Devon PL6 5JG

£450,000 - FREEHOLD





Rayners Franklyns

Plymouth, Devon PL6 5JG

Beautiful 1920's Detached family home, located in a quiet cul-de-sac, set on a large, private plot, with landscaped rear gardens & open plan living space. Complete with three double bedrooms, kitchen/dining room, lounge, ample off road parking, home gym & a garage.

- Three Double Bedroom Detached 1920's Family Home
- Refurbished to a Beautiful Standard
- Open Plan Kitchen/Dining Room
- Lounge
- Superb Shower Room & Downstairs Cloakroom
- Large, Private Landscaped Rear Gardens
- Garage & Ample Off Road Parking
- Outside Gym/Home Office
- Quiet Residential Cul-De-Sac
- Viewing Highly Advised



Rayners Franklyns

Plymouth, Devon PL6 5JG

You enter the property into the porch, which has a door leading into the entrance hall. The entrance hall has doors leading into the lounge, downstairs cloakroom and the kitchen/dining room, with stairs up to the first floor living accommodation. The cloakroom has an obscured window to the rear elevation, a low level w/c, hand wash basin and heated towel to finish.

The lounge has a large bay window to the front elevation, complete with a living flame gas fire. The lounge is superbly presented and is a great size. The kitchen/diner has a large bay window to the front elevation, with a multi fuel burner and a superbly equipped kitchen. There are French doors opening out onto the rear gardens. The breakfast bar creates a natural divide between the rooms, with the kitchen having a range of wall and base mounted units complete with a Quartz work surface over. There is a wide range of integral NEFF appliances, including a five ring induction hob with extraction hood over, a two ring gas hob and a double oven. There is an integrated wine fridge and space for a freestanding American style fridge/freezer.





Upstairs, the first floor landing leads through to all three bedrooms, the airing cupboard and shower room. The main bedroom has a large bay window to the front elevation, offering panoramic views over the city. There is a fitted wardrobe.

Bedroom two is also a good double size, with a large bay window to the front elevation with similar views over the city. Bedroom three is a smaller double bedroom with a window to the rear elevation. The shower room has a luxurious feel, with a walk in shower, a low level w/c and a hand wash basin. There is a large mirror, a heated towel rail, an obscured window to the side elevation and tiled splash backs and floor to finish.





Outside

Externally, the garage has an up and over door, with a range of fitted cupboards, the boiler, a window to the rear elevation and a door out onto the rear gardens.

The rear gardens have been landscaped, with a large lawn and a large patio area. There is a large home office/gym which has power and lighting and an additional summer house. The property has parking for three vehicles on the block paved driveway.

Garage

Single Garage

Off Road

3 Parking Spaces

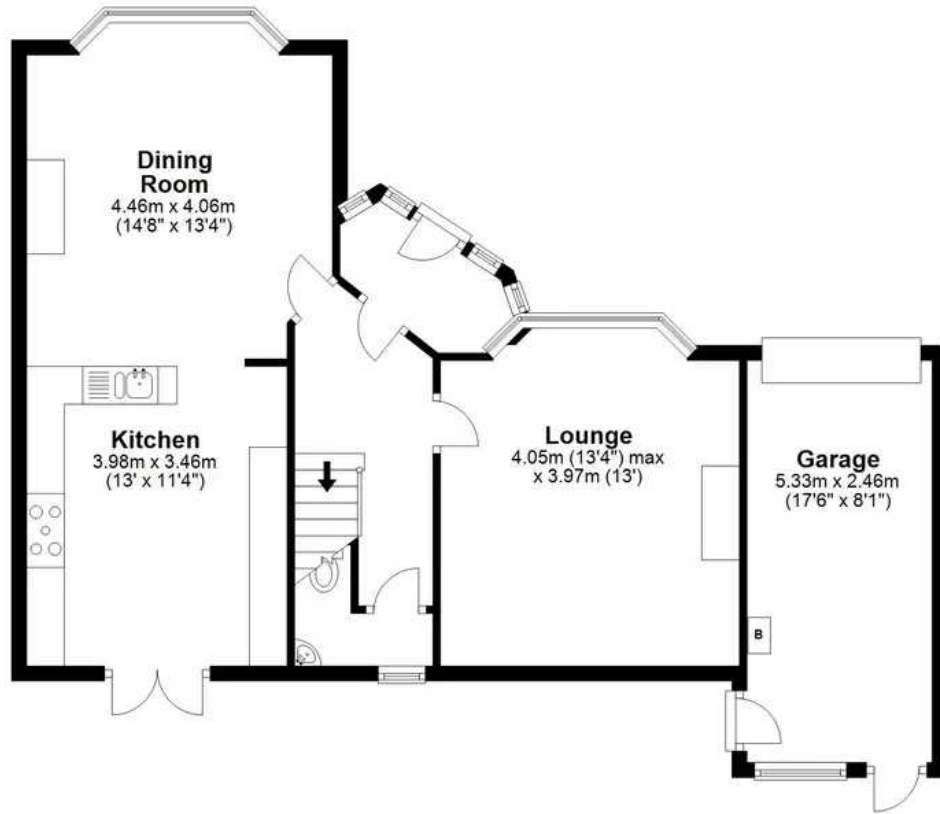
Council tax band: E

Tenure: Freehold



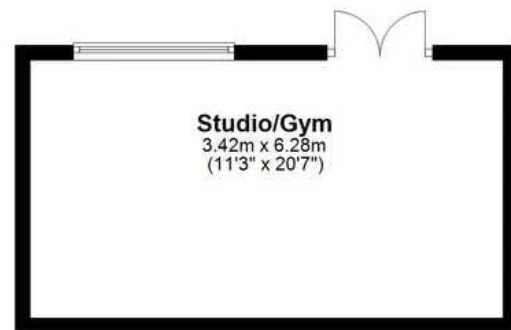
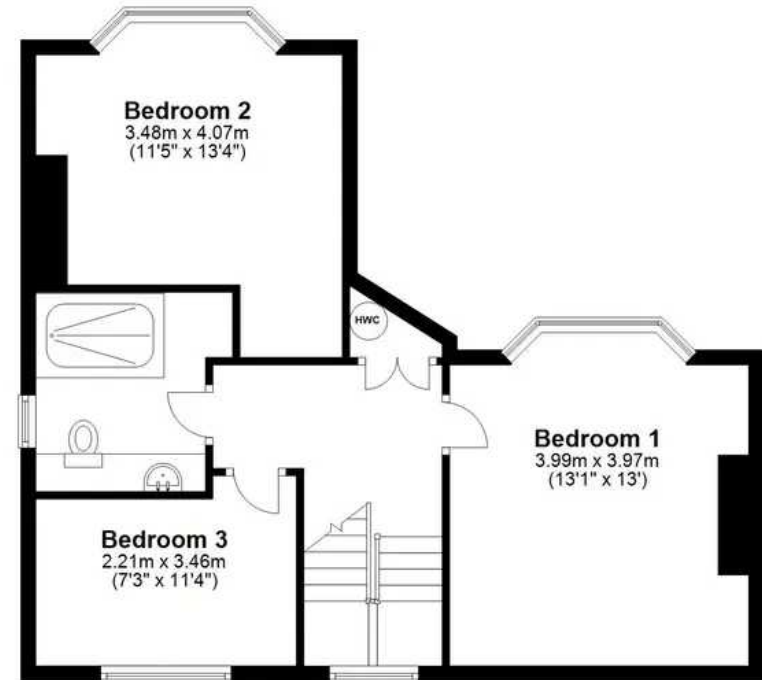
Ground Floor

Approx. 94.4 sq. metres (1015.8 sq. feet)



First Floor

Approx. 56.1 sq. metres (603.6 sq. feet)



Total area: approx. 150.4 sq. metres (1619.3 sq. feet)

Franklyns, Derriford, Plymouth



Atwell Martin

Atwell Martin, 65 Southside Street - PL1 2LA

01752 202121

plymouthsales@atwell-martin.co.uk

plymouth.atwellmartin.co.uk/

Atwell Martin Plymouth endeavour to ensure the accuracy of property details produced and displayed. Please note that we have not tested any apparatus, equipment, fixtures, fittings or services and so cannot verify that they are connected, in working order or fit for purpose. It is imperative that the buyer of any property makes such checks, prior to purchase so as to satisfy themselves of the properties suitability for their purchase. .