



25 Dartmouth Road, Portsmouth
Portsmouth

Fixed Price **£260,000**

 **chinneckshaw**



25 Dartmouth Road

Portsmouth, Portsmouth

A much loved three bedroomed family home in need of some updating provides a wonderful opportunity to create a bespoke interior. The property is located in the residential area of Copnor with good schools and amenities and recreational facilities at College Park. Easy access to the Eastern Road is via burrfields Road.

The home offers 2 reception rooms, the front reception with a feature fireplace is decorated in a sunny yellow and has original coving. The back reception has windows into the conservatory providing a light bright room. The kitchen has a range of modern base units and two retro wall units. There is space for a fridge freezer, cooker and washing machine and a small dining table fits in the room. The back door leads out to the conservatory with access to a downstairs toilet and door out to the garden.

The west-facing garden has a small concrete area and pathway with lawn either side. To the rear is a garden shed perfect to store garden accessories.

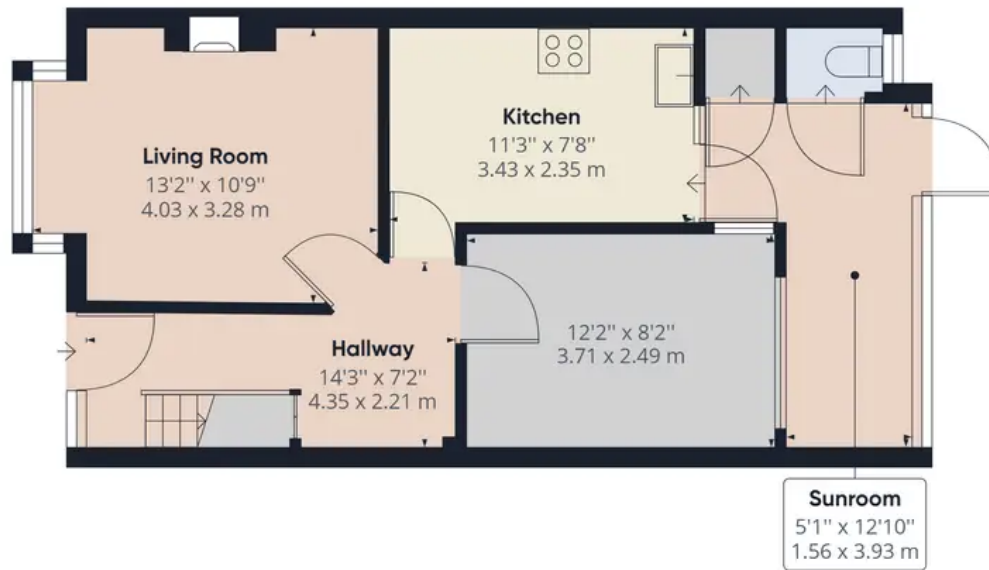
Upstairs there are three bedrooms. The principal double to the front has built in wardrobes and is decorated in a pastel blue. The second double is to the back, adjacent to the single which also has a window to the rear.

The family bathroom has a modern white suite with white tiling and a chrome towel radiator.

The property offers scope for improvement and upgrading but could be moved into immediately. This is a lovely property ready for a new family to create a new home. Council Tax band:

B. Tenure: Freehold





Ground Floor



Floor 1

Approximate total area⁽¹⁾

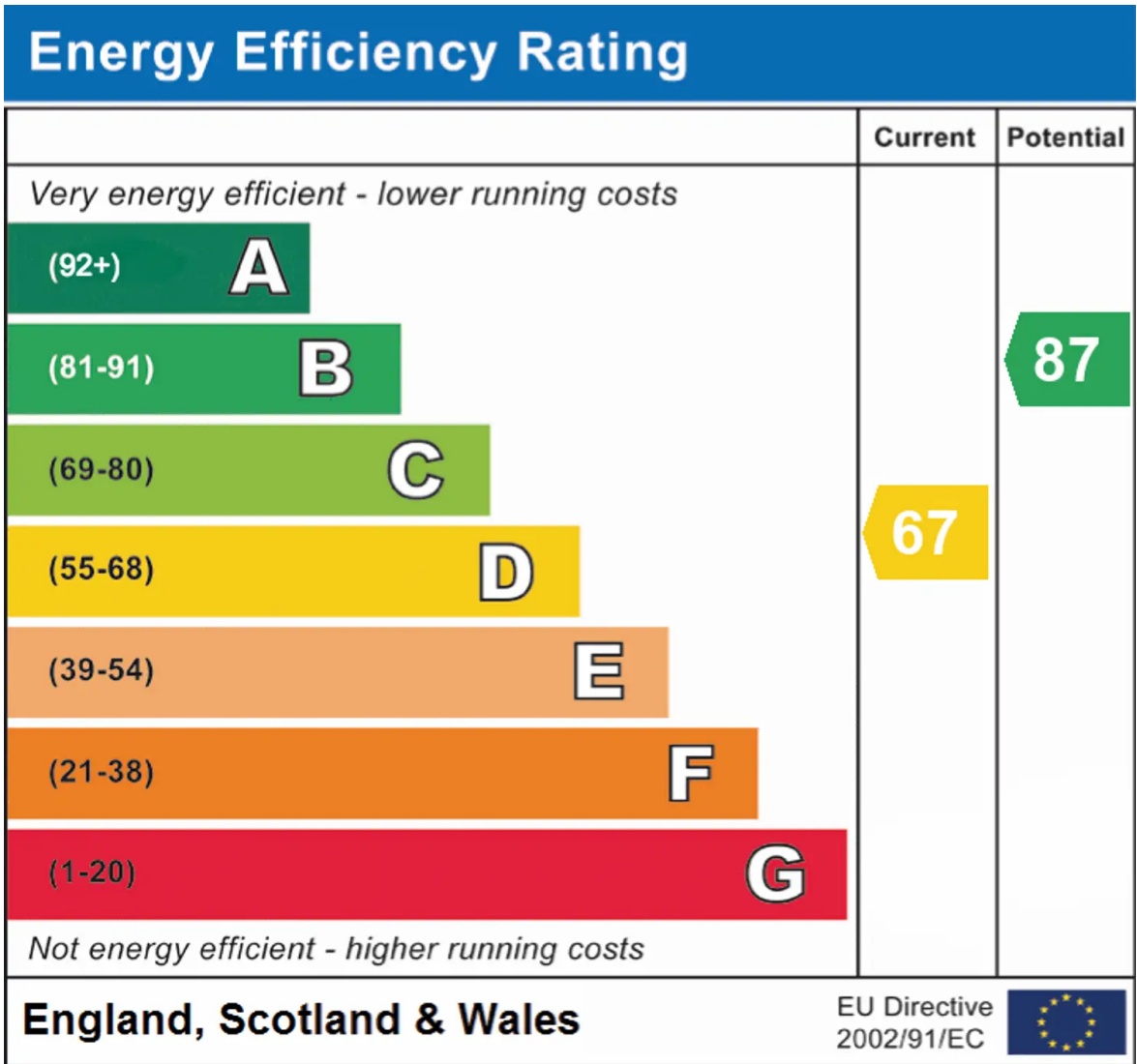
842.20 ft²

78.24 m²

(1) Excluding balconies and terraces

While every attempt has been made to ensure accuracy, all measurements are approximate, not to scale. This floor plan is for illustrative purposes only.

GIRAFFE 360



Chinneck Shaw

Bridge House, Milton Road, Portsmouth – PO3 6AN

023 9282 6731

hello@chinneckshaw.co.uk

www.chinneckshaw.co.uk/

Chinneck Shaw, Bridge House, Milton Road, PO3 6AN Consumer Protection from Unfair Trading Regulations 2008: These details are for guidance only and complete accuracy cannot be guaranteed. If there is any point which is of particular importance, verification should be obtained. The do not constitute a contract or part of a contract. All measurements are approximate. No guarantee can be given with regard to planning permissions or fitness for purpose. No apparatus, equipment, fixture or fitting has been tested. Items shown in the photographs are NOT necessarily included. Interested Parties are advised to check availability and make an appointment to view before travelling to see a property.