

Compton

Clerkenwell

50-54 Clerkenwell Road
EC1M 5PS

Fully-fitted floor available for rent in
the heart of Clerkenwell within a
converted Victorian warehouse

For Rent
1,672 ft²

020 7101 2020
compton.london



Compton

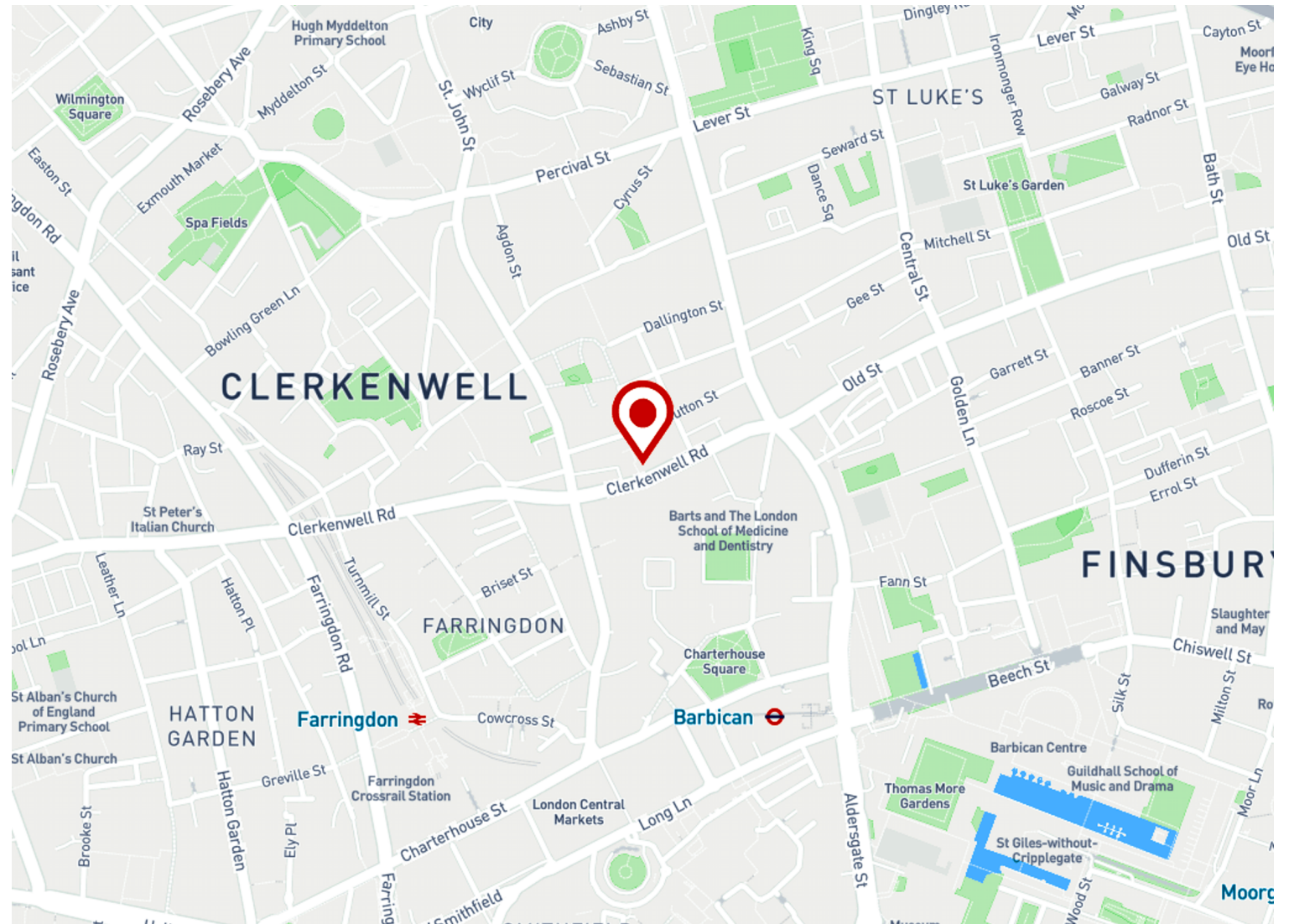
Clerkenwell

50-54 Clerkenwell Road
EC1M 5PS

Fully-fitted floor available for rent in the heart of Clerkenwell within a converted Victorian warehouse

For Rent

1,672 ft²



Location

Farringdon is exceptionally connected through its station which is one of four interchanges in London where passengers can access national rail links (via Thameslink), London Underground services (Metropolitan, Circle and Hammersmith & City) and The Elizabeth Line. Opened in 1863, Farringdon Station claims to be the oldest underground metro station in the world, but perhaps more impressive is the estimation that a quarter of England's population can reach Farringdon within 45 minutes.

Compton

Clerkenwell

50-54 Clerkenwell Road
EC1M 5PS

Fully-fitted floor available for rent in
the heart of Clerkenwell within a
converted Victorian warehouse

For Rent

1,672 ft²



Compton

Clerkenwell

50-54 Clerkenwell Road
EC1M 5PS

Fully-fitted floor available for rent in
the heart of Clerkenwell within a
converted Victorian warehouse

For Rent

1,672 ft²



Compton

Clerkenwell

50-54 Clerkenwell Road
EC1M 5PS

Fully-fitted floor available for rent in
the heart of Clerkenwell within a
converted Victorian warehouse

For Rent

1,672 ft²



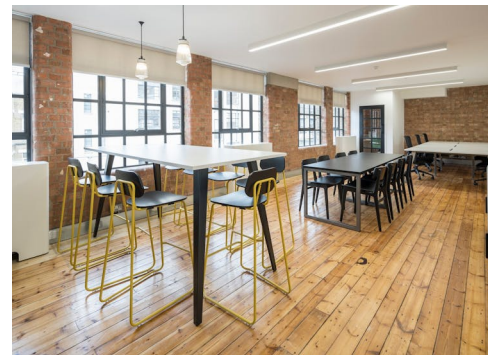
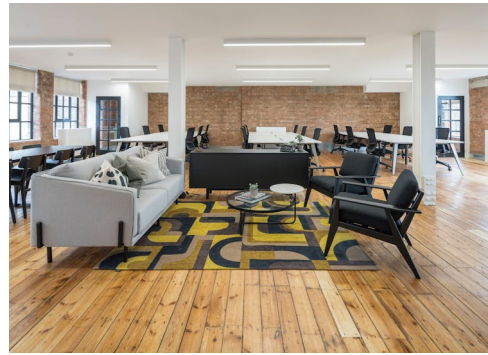
Compton

Clerkenwell

50-54 Clerkenwell Road
EC1M 5PS

Fully-fitted floor available for rent in
the heart of Clerkenwell within a
converted Victorian warehouse

For Rent
1,672 ft²



Compton

Clerkenwell

50-54 Clerkenwell Road
EC1M 5PS

Fully-fitted floor available for rent in the heart of Clerkenwell within a converted Victorian warehouse

For Rent

1,672 ft²

Amenities

- Fit-out includes 2 meeting rooms, 18 desks, 1 teapoint, 1 breakout area and 2 zoom rooms
- Additional quiet working and soft seating zones
- Generous floor to ceiling height
- Modern suspended lighting
- Wooden flooring
- Superb natural daylight from windows spanning two elevations
- Shower & cycle facilities
- 24-hour access

Description

The space has been fully-fitted by the Landlord to offer a ready to work solution. The fit-out includes 18 workstations, 2 meeting rooms, 1 teapoint, 1 breakout area, 2 zoom rooms, with additional quiet working and soft seating zones.

Compton

Clerkenwell

50-54 Clerkenwell Road
EC1M 5PS

Fully-fitted floor available for rent in the heart of Clerkenwell within a converted Victorian warehouse

For Rent

1,672 ft²

Content

[View in Virtual Reality](#)



[View on Website](#)



Terms

New full repairing & insuring lease available for a term by arrangement direct from the Landlord

Possession

Available now

VAT

The property is elected for VAT

Local Authority

The London Borough of Islington

Compton

Clerkenwell

50-54 Clerkenwell Road
EC1M 5PS

Fully-fitted floor available for rent in the heart of Clerkenwell within a converted Victorian warehouse

For Rent

1,672 ft²

Floor Areas & Outgoings

The accommodation comprises the following areas:

Name	sq ft	Rent (sq ft)	Rates Payable (sq ft)	Service Charge (sq ft)	Total month	Availability
3rd - Fully-fitted	1,672	£75	£15	£15.57	£14,709.42	Under Offer

Compton

Contact Us

All appointments to view must be arranged via sole agents, Compton, through —

Joshua Miller
jm@compton.london
07917 725 365

Emma Higgins
eh@compton.london
07769 605 295

