



Flat 22, Steadman Court, 165 Old Street
£725,000



Flat 22

Steadman Court, London

A large three double bedroom maisonette situated in the heart of the City with a private south-facing garden. Accommodation comprises; three double bedrooms, family bathroom, downstairs W.C. a fully fitted kitchen and a large living room which leads directly onto a private south facing garden.

Council Tax band: D

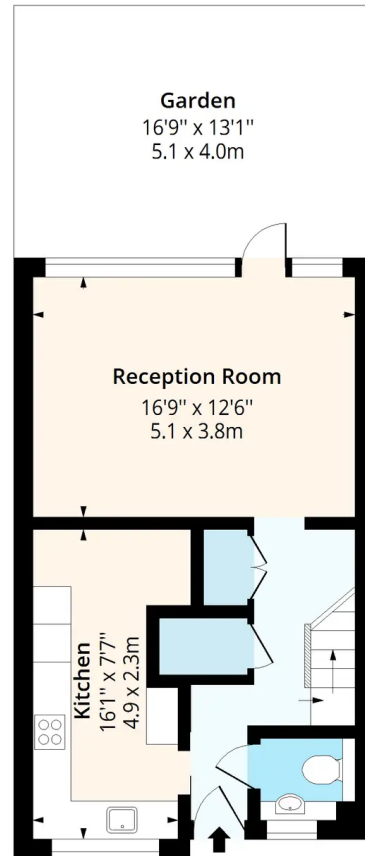
Tenure: Leasehold

- Three Double Bedrooms
- Private South Facing Garden
- Private Entrance
- Great Location
- Ideal Investment
- Chain Free
- Lots of Storage



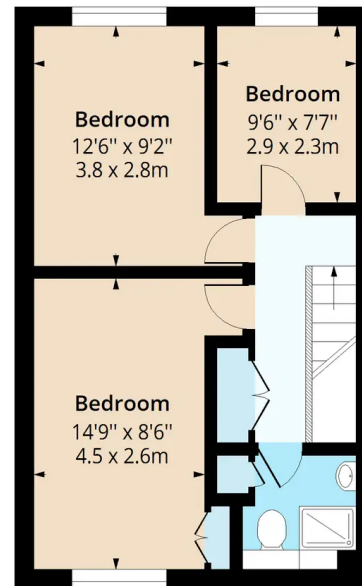
Old Street, EC1V

Approx. Gross Internal Area 961 Sq Ft - 89.28 Sq M



Ground Floor

Floor Area 489 Sq Ft - 45.43 Sq M



First Floor

Floor Area 472 Sq Ft - 43.85 Sq M



Measured according to RICS IPMS2. Floor plan is for illustrative purposes only and is not to scale. Every attempt has been made to ensure the accuracy of the floor plan shown, however all measurements, fixtures, fittings and data shown are an approximate interpretation for illustrative purposes only. 1 sq m = 10.76 sq feet.

lpaplus.com

Date: 28/4/2023



Agent & Homes

136B Lancaster Road, London - W11 1QU

02035980808

nathan@agentandhomes.com

www.agentandhomes.com/

