



Ponsonby Road, Plymouth, PL3 4HW

£350,000 FREEHOLD





Ponsonby Road

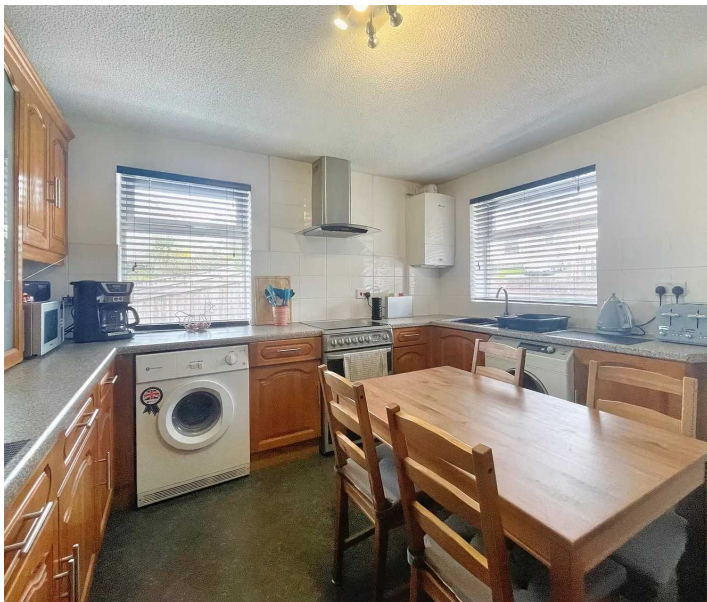
Plymouth, PL3 4HW

Introducing a stunning 3-bed detached property - a hidden gem in the heart of a central location. The house is your very own private haven, tucked away in a peaceful setting with breathtaking views onto a nature reserve. And that's not all, with 3 off-road parking spaces, you will always have somewhere to park.

Council Tax band: D

Tenure: Freehold

- Three Double Bedrooms
- Three Off Road Parking Spaces
- Extension
- Large Balcony
- Landscaped Gardens
- Views Over a Nature Preserve
- Central Location
- Separate Plot of Land For Use



Ponsonby Road

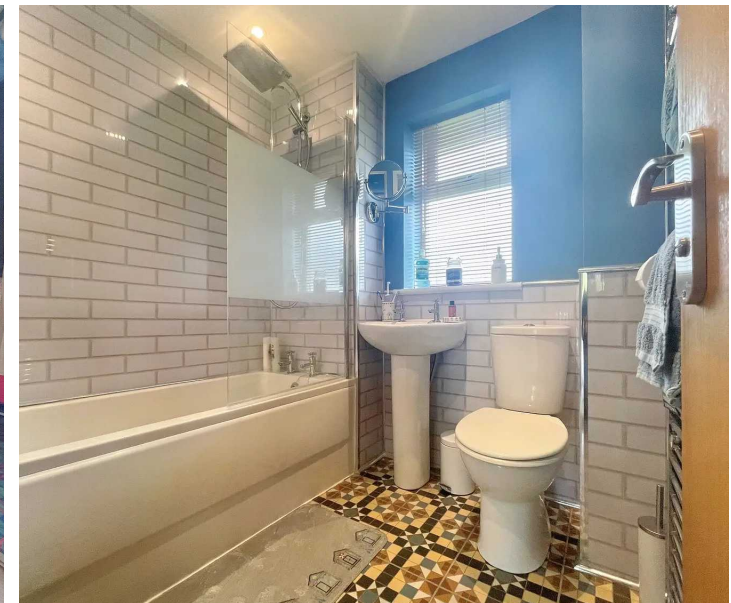
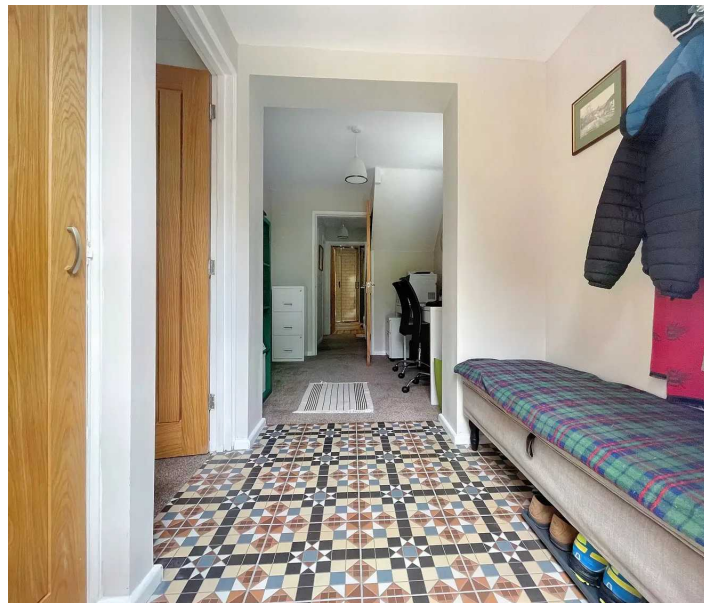
Plymouth, PL3 4HW

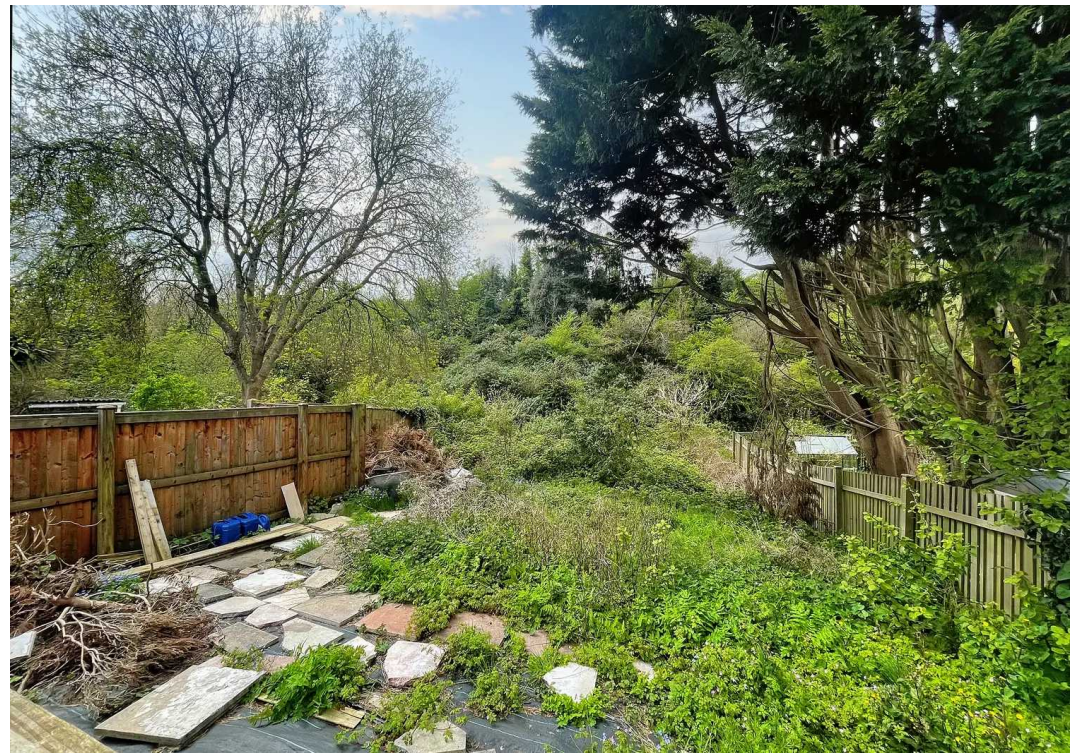
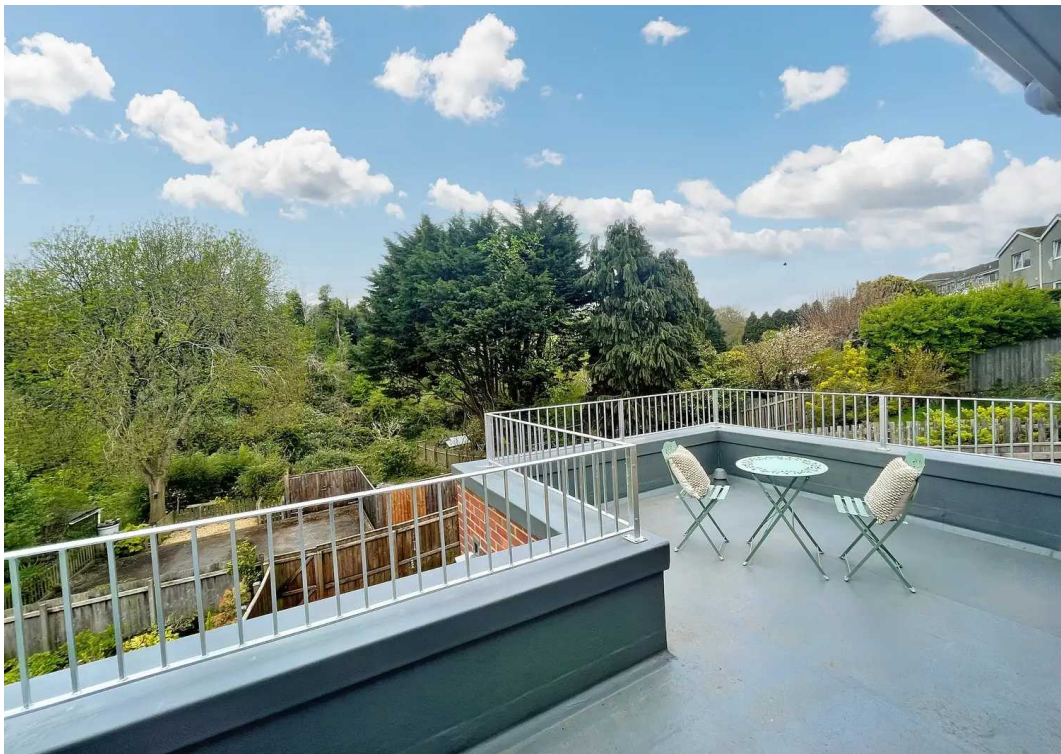
Introducing a stunning 3-bed detached property - a hidden gem in the heart of a central location. The house is your very own private haven, tucked away in a peaceful setting with breathtaking views onto a nature reserve. And that's not all, with 3 off-road parking spaces, you will always have somewhere to park.

One of the standout features of this property is the added extension which provides that critical extra space for families looking to enjoy the benefits of a larger home. Imagine entertaining your friends and family in the spacious living room or having a cozy night in front of the television with a good movie.

The large terrace in the back presents the ideal spot for al fresco dining or relaxing and enjoying the sun on a warm afternoon. The landscaped gardens are an absolute oasis of calm, bursting with colors and scents all year round. You can look out onto the nature reserve from here or simply bask in the peaceful surroundings.

And the benefits don't stop there, with a separate plot of land at your disposal, you have endless possibilities for recreational activities or potential usage. There really is no limit to what you can create here!





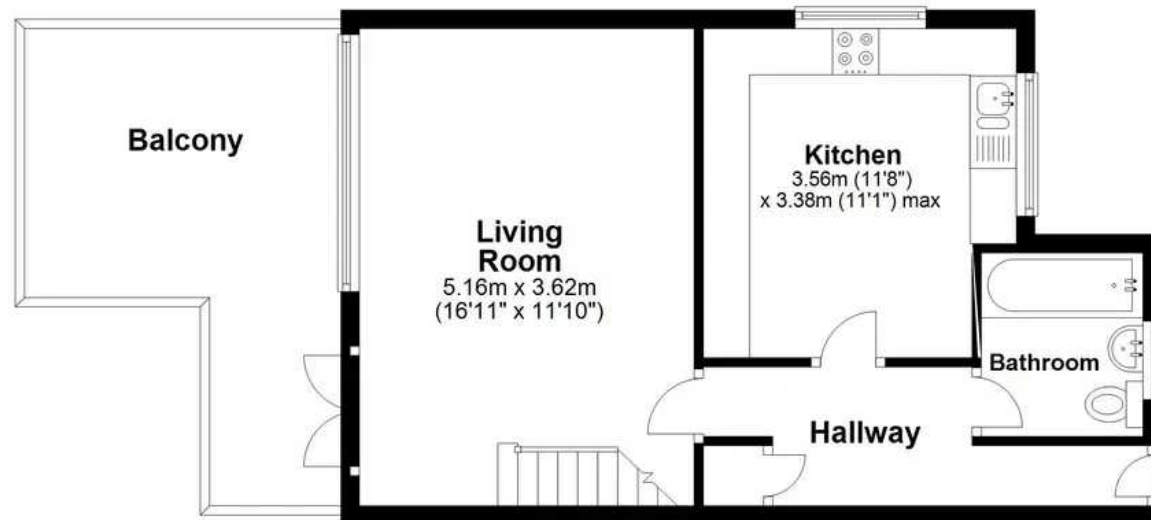
Lower Ground Floor

Approx. 47.1 sq. metres (507.5 sq. feet)



Ground Floor

Approx. 40.4 sq. metres (434.3 sq. feet)



Total area: approx. 87.5 sq. metres (941.8 sq. feet)

Ponsonby Road, Plymouth



Atwell Martin

Atwell Martin, 65 Southside Street - PL1 2LA

01752 202121

plymouthsales@atwell-martin.co.uk

plymouth.atwellmartin.co.uk/

Atwell Martin Plymouth endeavour to ensure the accuracy of property details produced and displayed. Please note that we have not tested any apparatus, equipment, fixtures, fittings or services and so cannot verify that they are connected, in working order or fit for purpose. It is imperative that the buyer of any property makes such checks, prior to purchase so as to satisfy themselves of the properties suitability for their purchase. .