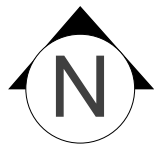


1 SITE PLAN
Scale 1:500 @ A3



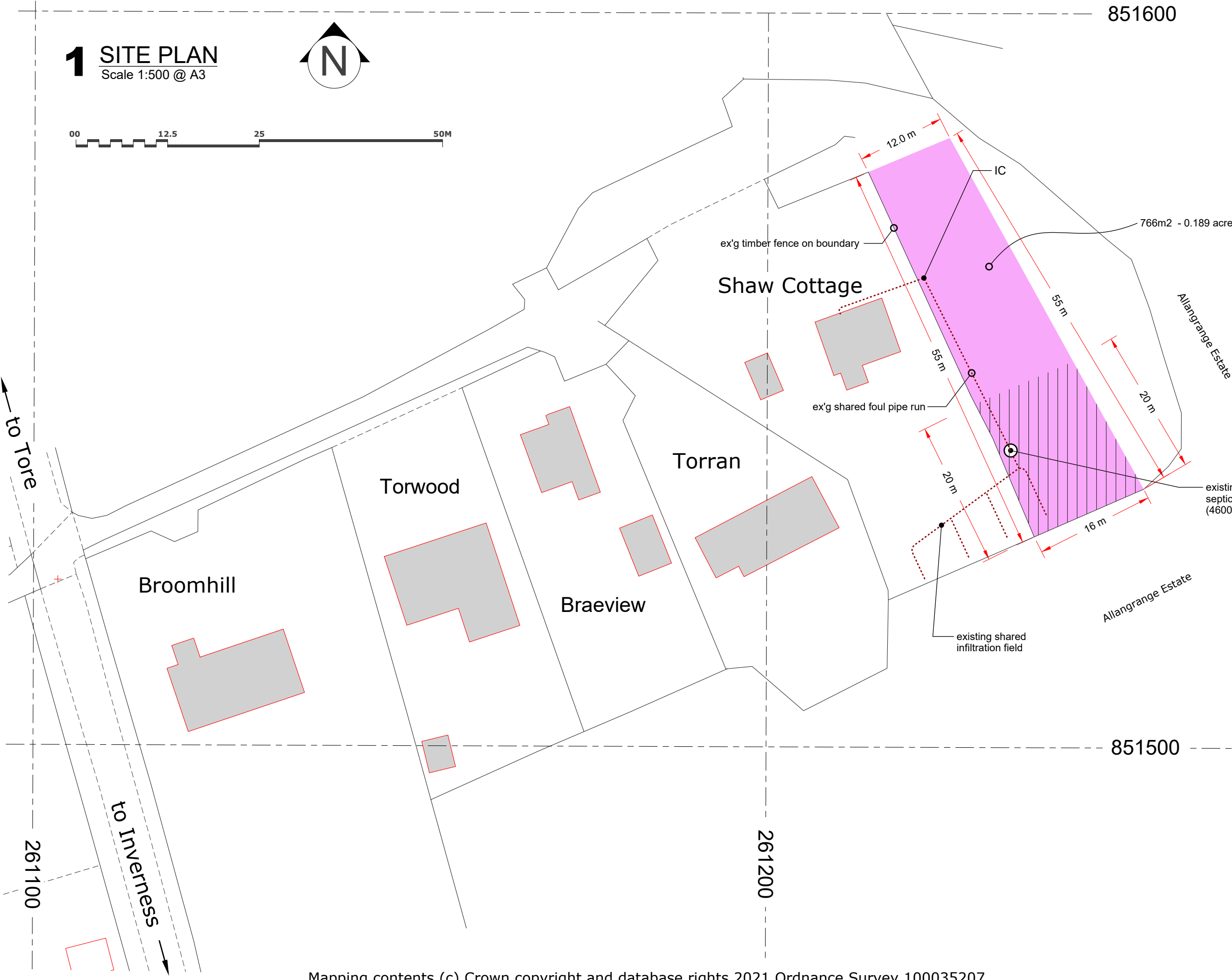
HRI | Munro
architecture

62 Academy Street,
Inverness
IV1 1LP

t: 01463 240066
f: 01463 717247

admin@hri-architects.com
www.hri-architects.com

to Tore
to Inverness



FOR INFORMATION

Rev.	Description	Date
------	-------------	------

Site by
Shaw Cottage
Broomhill
Tore - IV8 8NZ

Scale: 1:500	Project Partner: AB	Drawn: FS
-----------------	-------------------------------	---------------------

Date: 01.11.22	Project Leader:	Checked :
-------------------	-----------------	-----------

Project Number:	Drawing:	Revision:
-----------------	----------	-----------

I.7221 disposition A

© HRI Architects Ltd. All rights reserved.