

FOR SALE



Oxford Castle, New Road
Guide Price £395,000


MARTIN&CO

Oxford Castle, New Road

Key Notes:

- No Onward Chain
- Open-Plan Kitchen Living Area
- Lift Access
- Balcony overlooking Castle Quarter
- Tenants in Situ: September 2025
- Service Charge: £1,822.00 PA
- Ground Rent: £200.00 PA
- Council Tax Band: D
- Investors Only
- No Allocated Parking

Martin & Co welcome to the market this stunning One Bedroom Apartment in the highly desirable Oxford Castle development. The Martin & Co welcome to the market this stunning One Bedroom Apartment in the highly desirable Oxford Castle development. The apartment is being sold with Tenants in Situ and with No Onward Chain.

This modern apartment comprises of a spectacular Open-Plan Living Space leading out onto the Balcony overlooking the Castle Courtyard, a Kitchen equipped with integrated appliances, a well-proportioned bedroom with a fitted wardrobe, and a spacious bathroom with bath and separate shower.



HALL 5' 9" x 11' 8" (1.753m x 3.581m): On entering the property, immediately to the right is a utility cupboard, to the left is the bathroom, with an airing cupboard just beyond. Ahead is the bedroom, and to the right leads through to the kitchen and living/dining room with doors to the terrace.

BATHROOM 6' 2" x 8' 6" (1.905m x 2.591m): This spacious, modern bathroom is fitted with both a bath and a separate shower. Hand basin, WC, heated towel rail, white tiles, extractor fan and ceiling down lights.

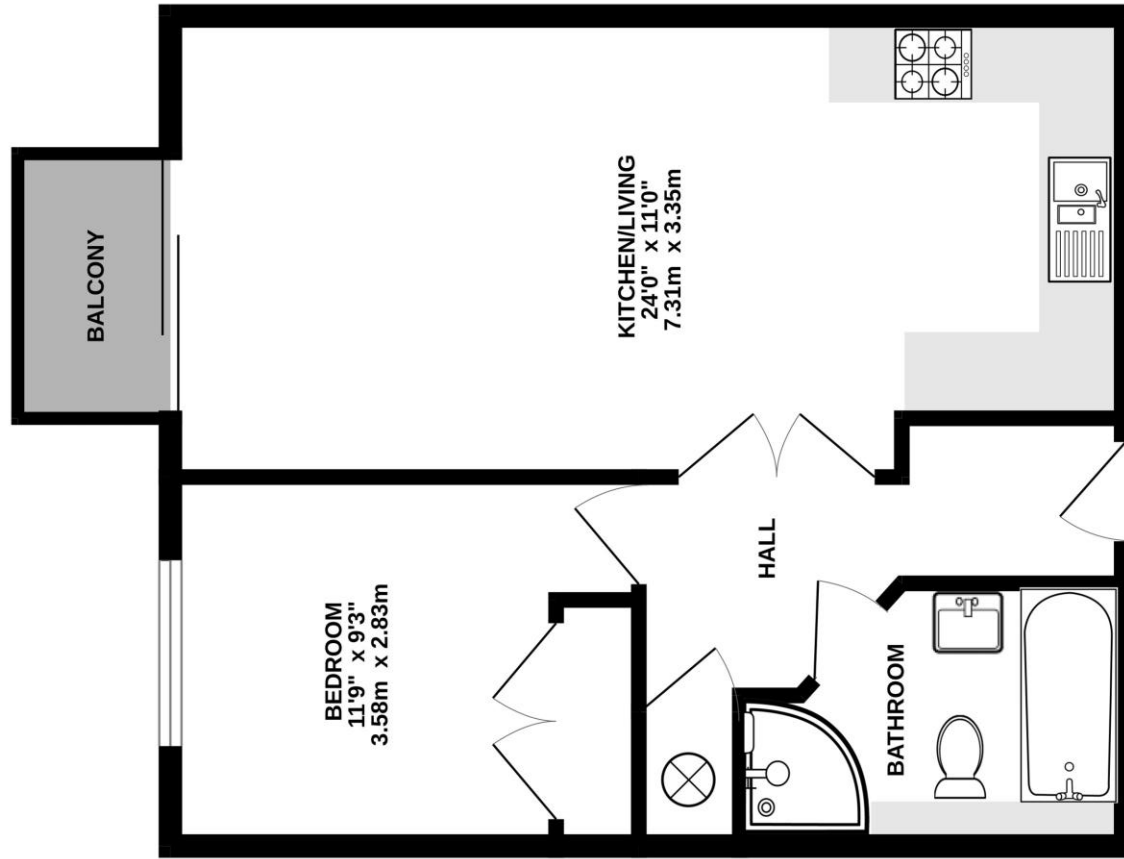
BEDROOM 9' 2" x 11' 8" (2.819m x 3.581m): This well designed bedroom has a lovely large window allowing sun into the room and a view out over the courtyard. There is a fitted wardrobe providing ample storage, and an electric panel radiator.

KITCHEN/LIVING AREA 11' 0" x 23' 11" (3.353m x 7.315m): The kitchen is well equipped with fitted cupboards and appliances. The washing machine and dishwasher are both integrated, as well as the oven/hob being fitted & a free standing fridge/freezer. All will be included with the sale, making this a complete kitchen for the new owner. This beautifully appointed living space has a sliding door opening out onto the balcony, and is heated by electric panel radiators.



Score	Energy rating	Current	Potential
92+	A		
81-91	B		
69-80	C		77 C
55-68	D	66 D	
39-54	E		
21-38	F		
1-20	G		

GROUND FLOOR
511 sq.ft. (47.5 sq.m.) approx.



TOTAL FLOOR AREA: 511 sq.ft. (47.5 sq.m.) approx.

Whilst every attempt has been made to ensure the accuracy of the floorplan contained here, measurements of doors, windows, rooms and any other items are approximate and no responsibility is taken for any error, omission or misstatement. All measurements are taken as shown and are not to be used as a basis for any prospective purchaser. The services, systems and appliances shown have not been tested and no guarantee as to their operability or efficiency can be given.
Made with Metropix ©2023

Martin & Co Oxford

31 Woodins Way • Paradise Street • •OX1 1HD
T: 01865 812110 • E: oxford@martinco.com

01865 812110

<http://www.martinco.com>



Accuracy: References to the Tenure of a Property are based on information supplied by the Seller. The Agent has not had sight of the title documents. A Buyer is advised to obtain verification from their Solicitor. Items shown in photographs including but not limited to carpets, fixtures and fittings are not included unless specifically mentioned within the sales particulars. They may however be available by separate negotiation. Buyers must check the availability of any property and make an appointment to view before embarking on any journey to see a property. No person in the employment of the agent has any authority to make any representation about the property, and accordingly any information given is entirely without responsibility on the part of the agents, sellers(s) or lessors(s). Any property particulars are not an offer or contract, nor form part of one. **Sonic / laser Tape:** Measurements taken using a sonic / laser tape measure may be subject to a small margin of error. **All Measurements:** All Measurements are Approximate. **Services Not tested:** The Agent has not tested any apparatus, equipment, fixtures and fittings or services and so cannot verify that they are in working order or fit for the purpose. A Buyer is advised to obtain verification from their Solicitor or Surveyor.