

To Let



Knoll House, Bury Road, Chingford, London, E4 7QL



## Edwardian Detached Six Bedroom House

£6,000 per calendar month

This beautiful detached house is set behind secure electric gates adjacent to Chingford Golf Course. Surrounded by landscaped gardens and a large driveway, this Edwardian-period property comprises three reception rooms, a large kitchen with a separate dining area, six bedrooms, one family bathroom, two en-suites, and two downstairs toilets.

- Beautiful Period- Edwardian Detached House
- Six Bedrooms
- Triple Garage
- Large Driveway
- Three Bathrooms
- Tree-house
- Five Toilets
- Sat Behind Secure Electronic Gates
- Adjacent to Chingford Gold Course

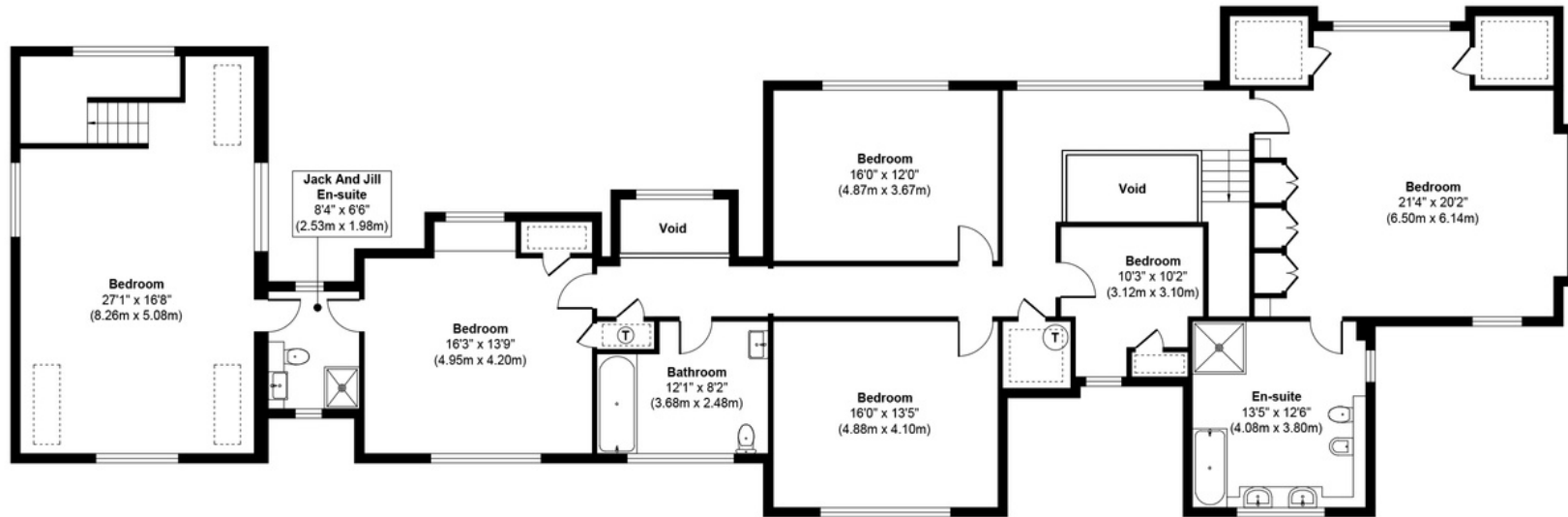
Viewings by appointment only

[info@netlettings.com](mailto:info@netlettings.com)

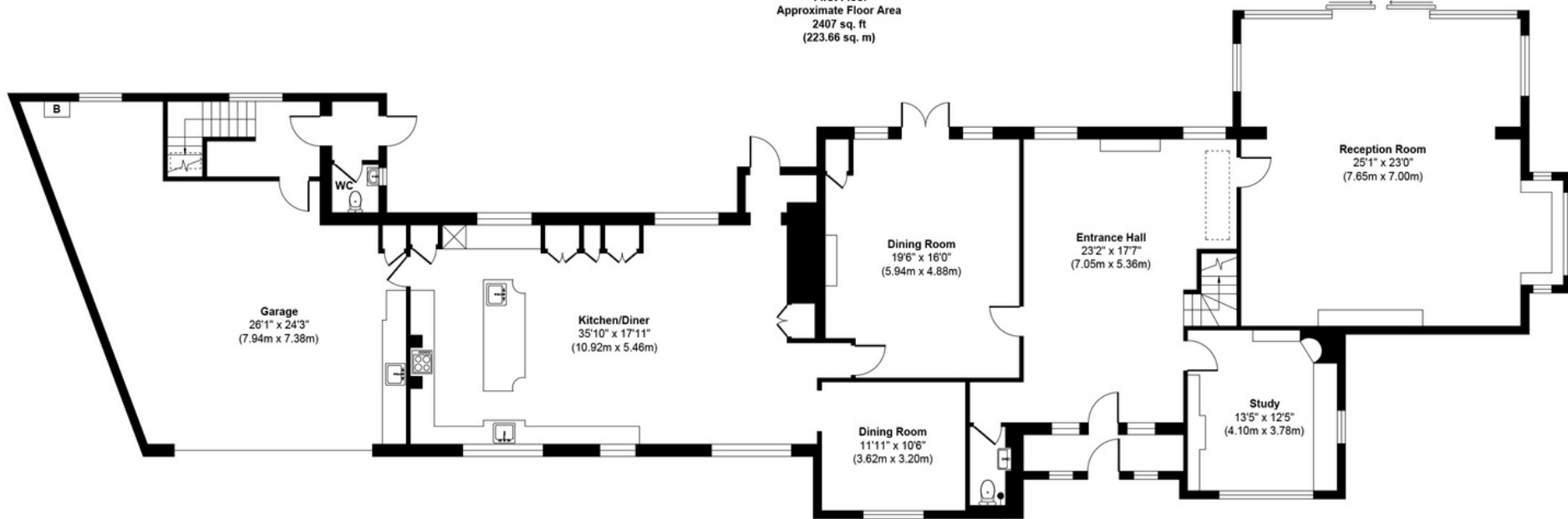
0208 981 5551



# Knoll House



First Floor  
Approximate Floor Area  
2407 sq. ft  
(223.66 sq. m)



Ground Floor  
Approximate Floor Area  
2340 sq. ft  
(217.43 sq. m)

**Approx. Gross Internal Floor Area 4747 sq. ft / 441.09 sq. m**

Illustration for identification purposes only, measurements are approximate, not to scale.

Produced by Elements Property

## Location & Transport

 Chingford Overground - 17 mins walk

ZABETH LINE

# NET LETTINGS .COM



1 hr 6 mins to Canary Wharf  
46 mins to Liverpool Street  
56 mins to Bank







