

VICTORIA ROAD BIDFORD-ON-AVON ALCESTER



A stunning example of a period, semi-detached family home offering tastefully extended accommodation to include, living room with feature open fire, dining room, extended kitchen/diner with quarry tiled flooring and dual aspect windows overlooking the rear garden, utility area, downstairs cloakroom, three first floor bedrooms, first floor bathroom, separate WC and additional second floor bedroom with part exposed chimney breast and window seat area boasting elevated views to the rear elevation. Driveway parking and extensive rear garden, with paved side walkway and housing a substantial home office/gym/studio with power.

£400,000

Burton House, High Street, Alcester, Warwickshire, B49 5AB.
Tel: 01789 766771 E-mail: alcester@sanders-sanders.co.uk

Web: www.sanders-sanders.co.uk

Victoria Road, Bidford-on-Avon, Alcester, B50 4AR

Living Room

12' 10" (3.91m) x 12' 0" (3.66m)



Kitchen/Diner

22' 6" (6.86m) x 10' 6" (3.2m)



Dining Room

16' 9" (5.11m) x 11' 1" (3.38m)





First Floor

Bedroom Two
11' 5" (3.48m) x 11' 1" (3.38m)



Bedroom Three
11' 1" (3.38m) x 10' 2" (3.1m)



Bedroom Four
12' 10" (3.91m) x 8' 10" (2.69m)

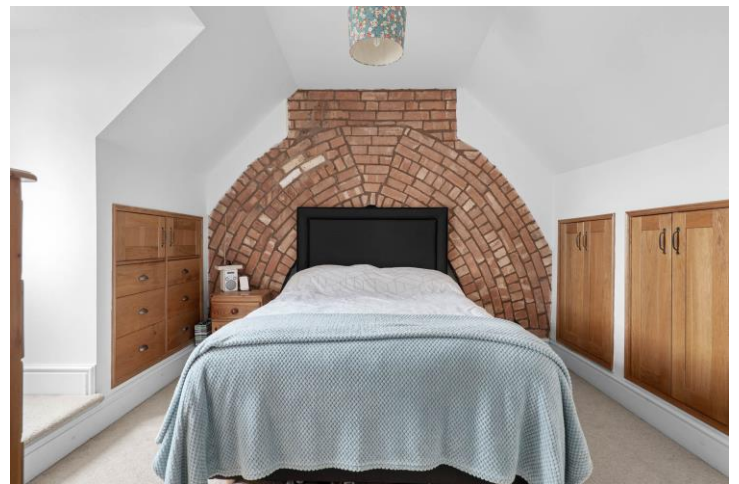


Bathroom



Second Floor

Bedroom One
17' 5" (5.31m) max x 11' 5" (3.48m) max



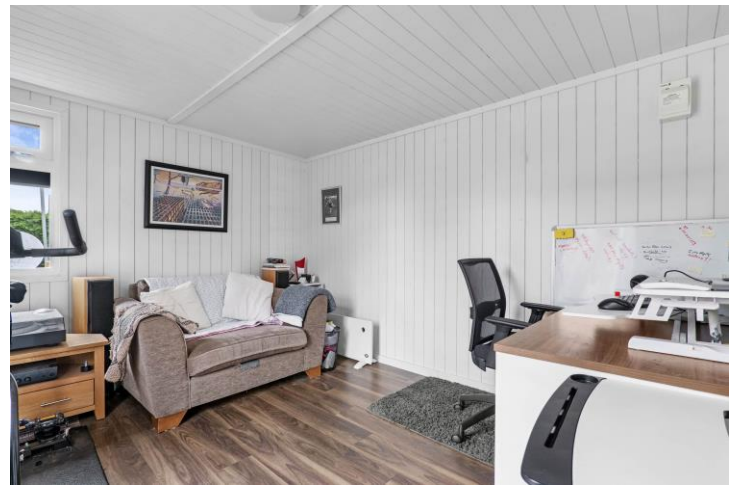
En-Suite



Rear Garden



Home Office/Studio



Floor Plans & Property Details Disclaimer

These floor plans are for identification purposes only in relation to where one room is situated to another. They are not to be relied upon in any way for dimensions, scaling or sq. ft/metres. We will not be held responsible for any loss incurred, due to reliance on these measurements from the floor plans or measurements from the property details. You are advised to confirm all measurements.



Fixtures & Fittings

Please note that the fixtures & fittings shown on the photographs, contained within these property details, do not form part of a fixtures & fittings list. Some items may/may not be included. You are advised to clarify what items are included before entering into any negotiations.