



PHILLIPS & STILL

BLATCHINGTON ROAD, HOVE
GUIDE PRICE £275,000 - £300,000





This delightful and spacious first and second floor maisonette offers generous accommodation and comprises of two bedrooms living room, bathroom and kitchen. It would make an ideal investment, holiday home or first home.

The location is second to none and you're only a stone's throw away from all of the local shops and immunities on Blatchington Road itself. Hove seafront bars/restaurants are all within walking distance and Hove station is also close making it great for someone who wants to commute to London or Gatwick. Bus service are also and offer frequent access to Brighton city centre.

FIRST FLOOR

ENTRANCE HALL

BEDROOM

13' 0" x 11' 10" (3.96m x 3.61m)

KITCHEN

9' 8" x 9' 5" (2.95m x 2.87m)

BATHROOM

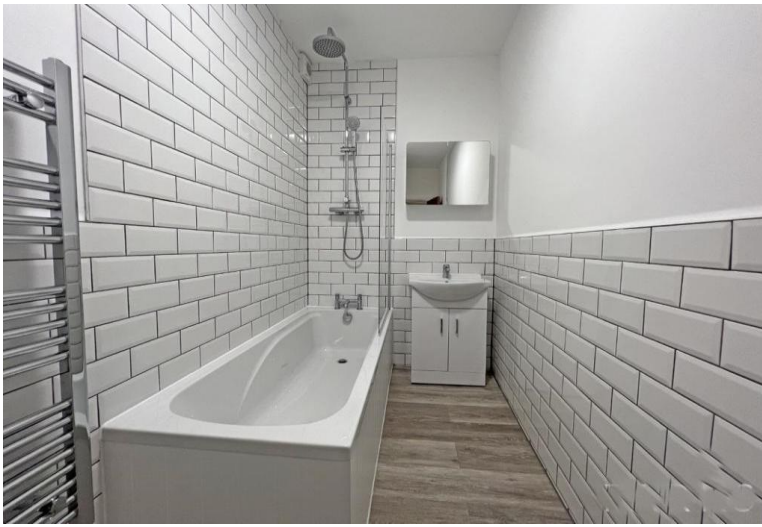
BEDROOM

11' 6" x 7' 3" (3.51m x 2.21m)

SECOND FLOOR

SITTING ROOM

15' 10" x 10' 11" (4.83m x 3.33m)



Blatchington Road, Hove, BN3 3YN

Approximate Gross Internal Area = 72.3 sq m / 778 sq ft



First Floor

Second Floor

Illustration for identification purposes only, measurements are approximate, not to scale. Imageplansurveys @ 2023

Score	Energy rating	Current	Potent
92+	A		
81-91	B		
69-80	C		75
55-68	D	60	
39-54	E		
21-38	F		
1-20	G		

Agents Note: Whilst every care has been taken to prepare these sales particulars, they are for guidance purposes only. All measurements are approximate and for general guidance purposes only and whilst every care has been taken to ensure their accuracy, they should not be relied upon and potential buyers are advised to recheck the measurements

