

Love Homes



Greenfield Road, Flitton, Bedfordshire, MK45 5DR

Available chain free, this well-presented detached bungalow is located on a lovely mature plot enjoying a well maintained south/easterly facing rear garden as well as excellent potential to extend (subject to planning consent). Ideal for those looking for accommodation on one level, the layout briefly comprises; a dual aspect living room, a modern kitchen/breakfast room, a separate dining room, a conservatory/utility, two double bedrooms, a modern shower room and additional cloakroom. Further benefits include double glazed windows, gas central heating and an oversized garage with electric door.



This property is presented by Duncan Stead - a Love Homes property expert with over 25 years' experience.

Find out more about this property by scanning the QR code.



2.0m



2



2



1

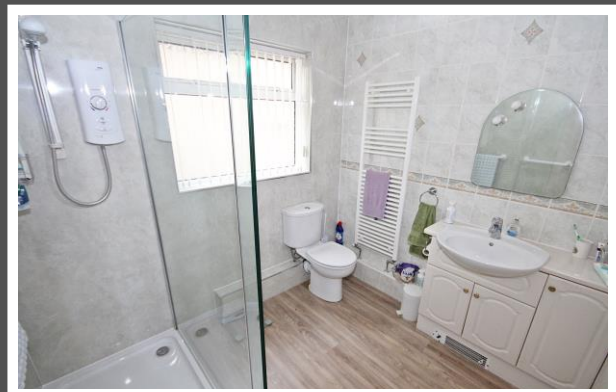
Tenure: Freehold Council Tax Band: E

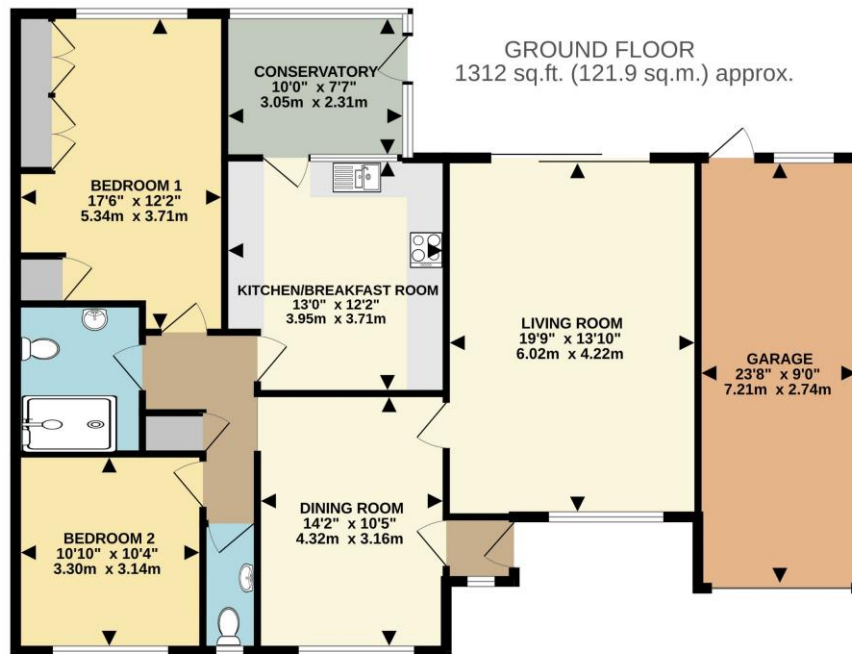


♥

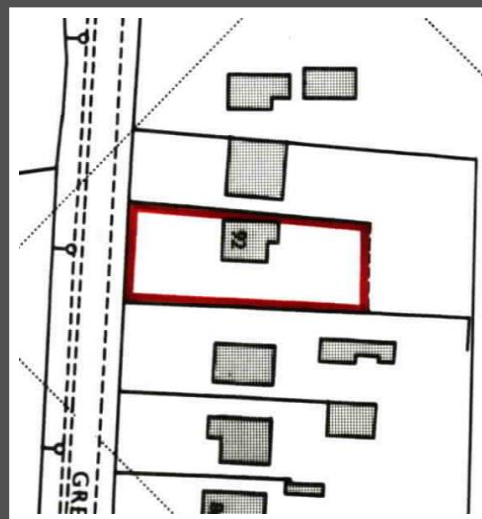
"My parents bought the property in 1986 and were immediately taken by the generous size of each room and the abundance of natural light to flood the space, creating a warm and welcoming atmosphere. They loved being in the garden which has been lovingly maintained and something the whole family has been able to enjoy over the years. The bathroom was updated to a shower room a couple of years ago, the kitchen big enough to accommodate a handy breakfast table and there are plenty of parking for visitors and family and a garage with a modern electric roller door. The bungalow is a fantastic opportunity for anyone looking for a comfortable and spacious home in a peaceful location".

♥





Score	Energy rating	Current	Potential
92+	A		
81-91	B		84 B
69-80	C		
55-68	D	62 D	
39-54	E		
21-38	F		
1-20	G		



These particulars are set out as a general outline in accordance with the Property Misdescriptions Act (1991) only for the guidance of intending purchasers or lessees, and do not constitute any part of an offer or contract. Details are given without any responsibility, and any intending purchasers, lessees or third parties should not rely on them as statements or representations of fact but must satisfy themselves by inspection or otherwise as to the correctness of each of them. We have not carried out a structural survey and the services, appliances and specific fittings have not been tested. All photographs, measurements, floor plans and distances referred to are given as a guide only and should not be relied upon for the purchase of carpets or any other fixtures or fittings. Gardens, roof terraces, balconies, and communal gardens as well as tenure and lease details cannot have their accuracy guaranteed for intending purchasers. Lease details, service ground rent (where applicable) is given as a guide only and should be checked and confirmed by your solicitor prior to exchange of contracts. No person in the employment of Love Homes has any authority to make any representation or warranty whatever in relation to this property. Purchase prices, rents or other prices quoted are correct at the date of publication and, unless otherwise stated, are exclusive of VAT. We retain the copyright in all advertising material used to market this Property.

5 The Russell Centre, Coniston Road, Flitwick, MK45 1QY
 Tel: 01525 713111
 Email: flitwick@lovehomes.uk
www.lovehomes.uk

