

**FOR SALE**



**Oliver Grove, South Norwood**

**1 Bedroom, 1 Bathroom, Big Top Floor Flat**

**Asking Price Of £260,000**





## **Oliver Grove, South Norwood**

**1 Bedroom, 1 Bathroom**

**Asking Price Of £260,000**

LOVELY SPACIOUS APARTMENT in quiet location ONLY A FEW MINUTES WALK from High Street and Norwood Junction Station. Entrance spacious larger than average living/dining room, fitted kitchen big enough for a breakfast table, double bedroom, bathroom/wc, allocated parking space. Benefits from long lease & no chain - CALL NOW!

- Very Large 1 Bedroom Apartment
- Top Floor
- Kitchen Big Enough for Breakfast table
- Gas Central Heating
- Off Road Parking





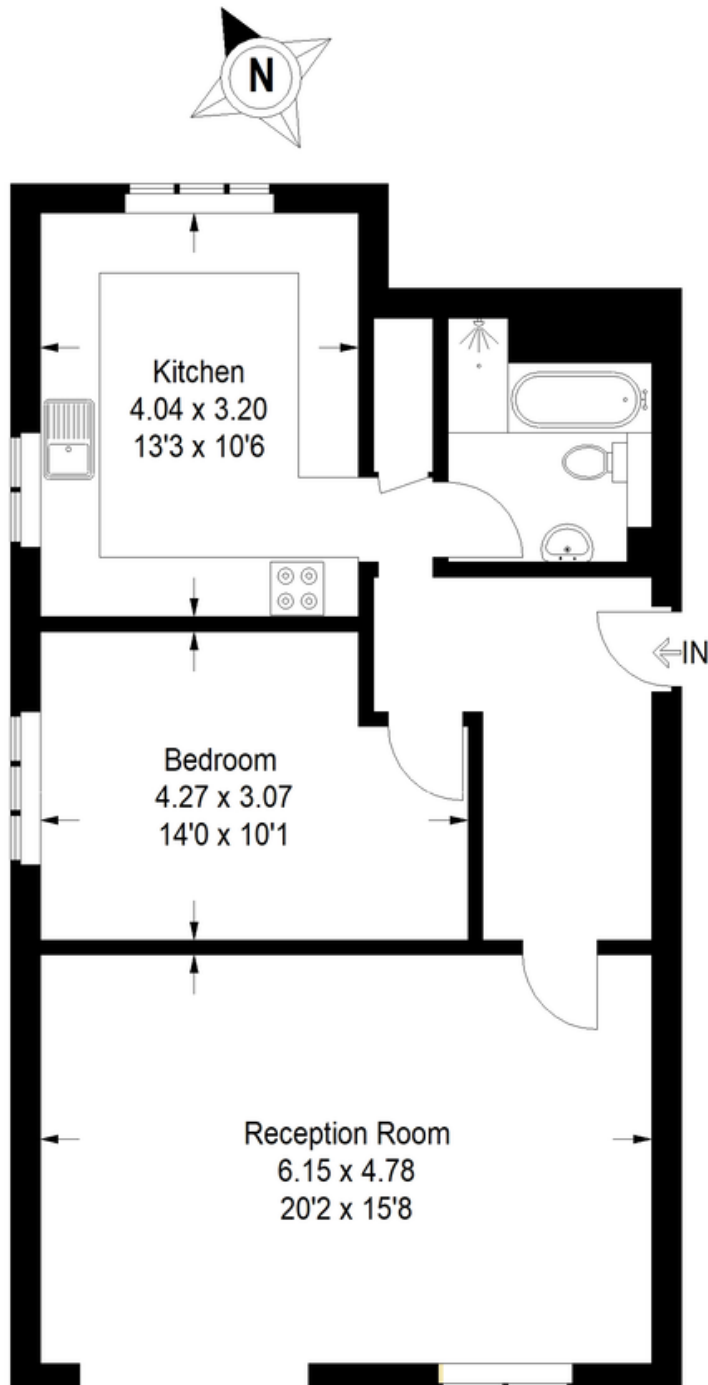


%epcGraph\_c\_1\_441%



# Persia Court, SE25

Approximate Gross Internal Area  
69.7 sq m / 750 sq ft



## Martin & Co Croydon

145 Brighton Road • South Croydon • CR2 6EF  
T: 0208 688 8565 • E: [croydon@martinco.com](mailto:croydon@martinco.com)

# 0208 688 8565

<http://www.martinco.com>



**Accuracy:** References to the Tenure of a Property are based on information supplied by the Seller. The Agent has not had sight of the title documents. A Buyer is advised to obtain verification from their Solicitor. Items shown in photographs including but not limited to carpets, fixtures and fittings are not included unless specifically mentioned within the sales particulars. They may however be available by separate negotiation. Buyers must check the availability of any property and make an appointment to view before embarking on any journey to see a property. No person in the employment of the agent has any authority to make any representation about the property, and accordingly any information given is entirely without responsibility on the part of the agents, sellers(s) or lessors(s). Any property particulars are not an offer or contract, nor for part of one. **Sonic / Laser Tape:** Measurements taken using a sonic / Laser tape measure may be subject to a small margin of error. **All Measurements:** All Measurements are Approximate. **Services Not tested:** The Agent has not tested any apparatus, equipment, fixtures and fittings or services and so cannot verify that they are in working order or fit for the purpose. A Buyer is advised to obtain verification from their Solicitor or Surveyor.