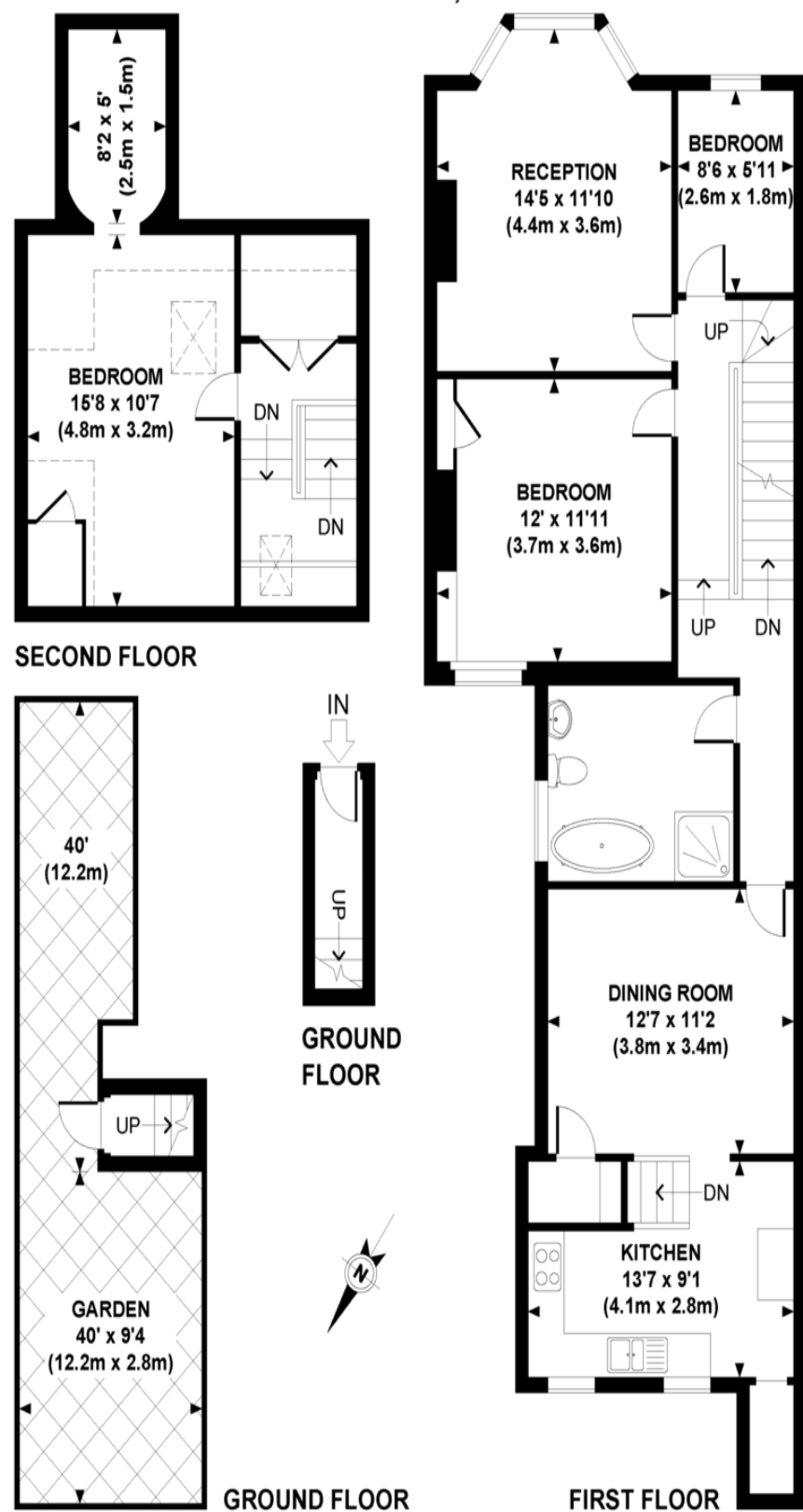


Furness Road, NW10



Whilst every attempt has been made to ensure the accuracy of this floor plan; measurements of door, windows, rooms and all other items are approximate. No responsibility is taken for any error, omission or mis-statement. This floor plan is for illustrative purposes only, and should be treated as such.



Furness Road, London, NW10 4QE

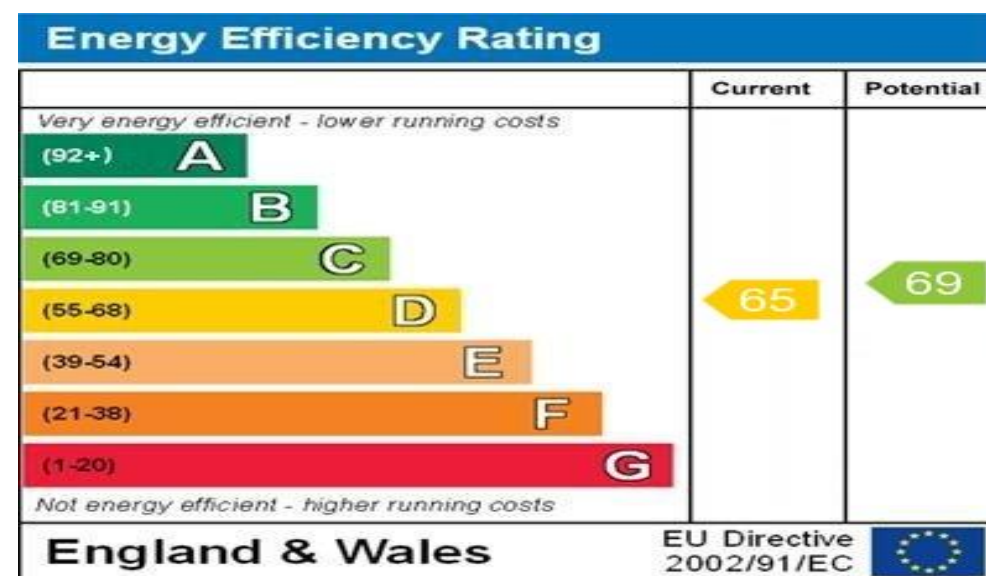
£750,000 Share of Freehold

Key Features

- Three Bedroom Period Apartment
- 1175 sq ft
- Packed With Charm
- Stunning Period Features
- Two Minutes To The Station
- Garden
- Share Of Freehold
- Highly Sought After

Description

We are favoured with sole agency instructions to offer to the open market this simply stunning period apartment which is situated on this highly sought after road only moments from Willesden junction station. This well maintained period home occupies the whole top floor of this handsome period house and is packed with character including a fabulous bay fronted living room with a beautiful fireplace which is flooded with natural light. At just under 1200 sq ft this fabulous property is something that is very rare to the open market. Serious offers for the share of freehold are invited and we urge an early viewing.



WWW.EPC4U.COM