



28 Horse Road, Hilperton Marsh

Trowbridge

Guide Price £300,000



Study

13' 12" x 10' 0" (4.27m x 3.05m)

Double glazed window to front, stairs to first floor and opening to kitchen

Kitchen

11' 6" x 9' 10" (3.51m x 3m)

Double glazed window to rear, range of wall and base units with worksurface, space for white goods. Belfast style sink unit looking onto rear garden. Open to dining area

Dining Room

11' 7" x 9' 5" (3.53m x 2.87m)

Double glazed doors to rear garden, and open to living room

Livign Room

13' 12" x 9' 10" (4.27m x 3m)

Double glazed window to front, wood burning stove

Bedroom 1

13' 12" x 9' 10" (4.27m x 3m)

Double glazed window to front, feature fireplace

Bedroom 2

10' 11" x 10' 0" (3.33m x 3.05m)

Double glazed window to front, feature fireplace

Bedroom 3

10' 0" x 7' 12" (3.05m x 2.44m)

Double glazed window to rear, L shaped - (Max measurements)

Bathroom

Double glazed windows to rear garden, shower cubicle, roll top bath with mixer tap, low level WC and wash hand basin





GARDEN

Rear garden is approx. 150ft long, backing onto fields. The garden is broken into several areas, there is a lovely patio area to enjoy, there is a decked area next to the external garden room (with power and light), and the remainder is laid to lawn and shrubbery

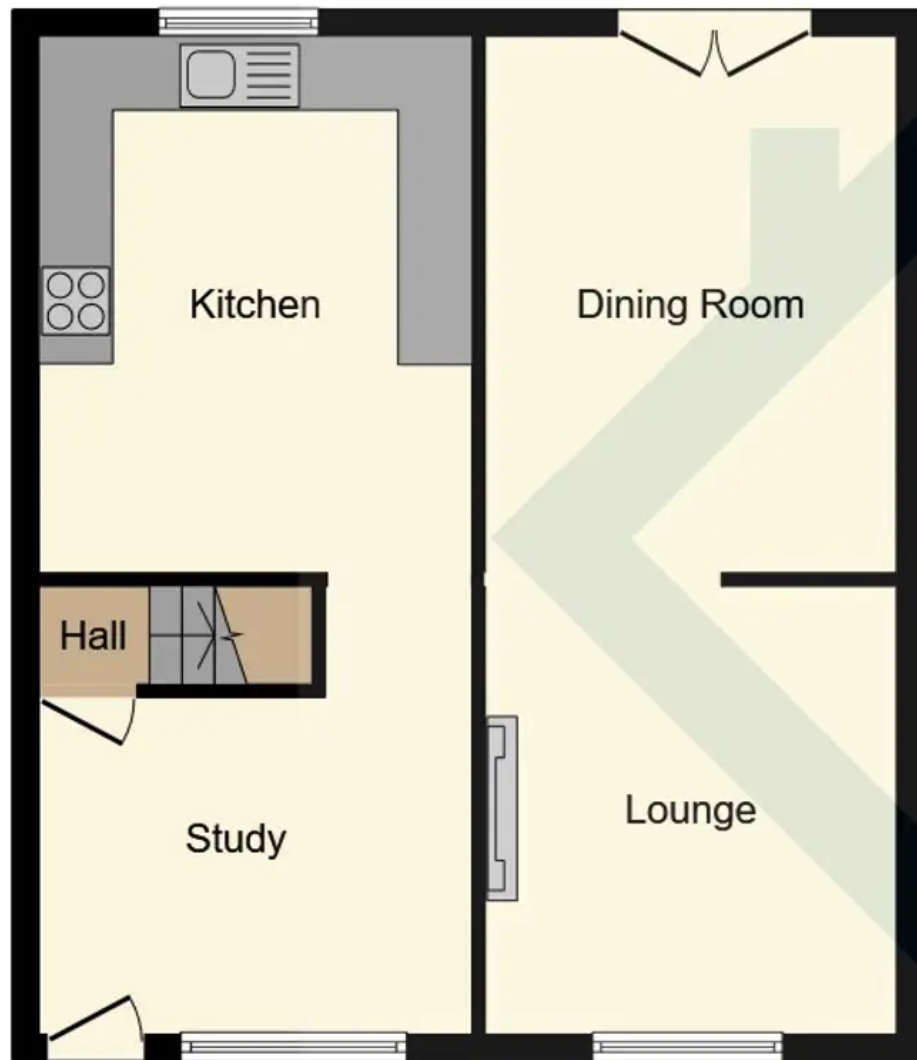
GARAGE

Single Garage

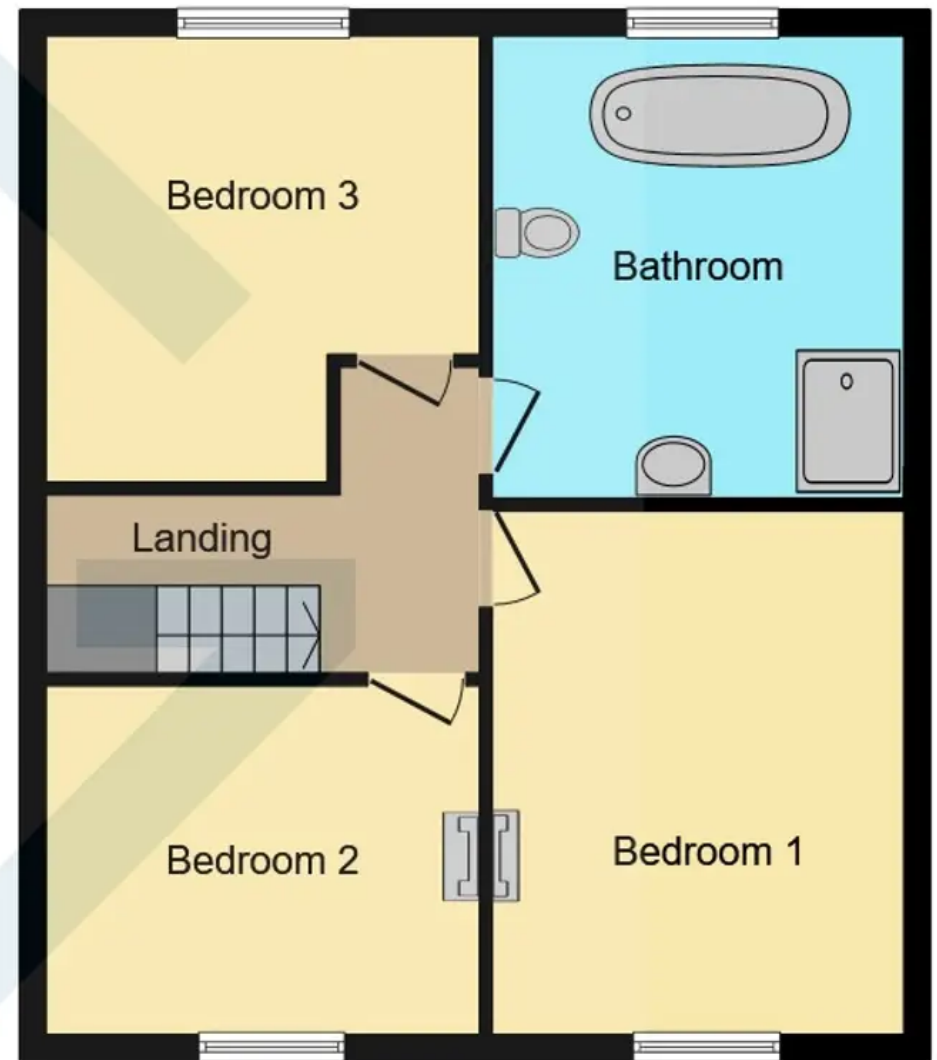
Garage enbloc - no power or light, up and over door.







Ground Floor



First Floor

These are intended as a guide, we have not tested anything – any questions please check with your solicitor or us.