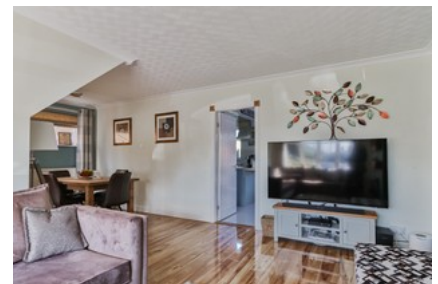




Benningholme Lane, Skirlaugh

INVITING OFFERS BETWEEN £270,000 - £290,000



- ✔ Simply Stunning Recently Modernised & Improved Three Bedroom Detached Property
- ✔ Sought After Location Within The Ever Popular Village Of Skirlaugh
- ✔ No Stone Has Been Left Unturned In Providing A Beautifully Appointed Property In Move-in Condition
- ✔ Off-road Parking & Garage To Front
- ✔ Superb Garden To Rear
- ✔ Freehold
- ✔ Council Tax Band D
- ✔ Epc Rating D

Guide Price **£270,000**

Bedroom 3 Bathroom 1 Reception 1