



Flat 3, Oakley House Yarborough Road, Southsea

Offers in Region of £185,000

 chinneckshaw



Flat 3

Oakley House Yarborough Road, Southsea

In the heart of Southsea, we are delighted to offer this two bed ground floor flat that's ready to move straight into. Close to Castle Road with plenty of local amenities, a 10-minute walk to Southsea Common and easy access to the M275, this flat is in a great location.

On the ground floor, the flat has an intercom entry system. The entrance hall has plenty of storage with cupboards and all rooms are accessed from the hallway. There are two double bedrooms, both benefiting from fitted cupboards, whilst having space for further bedroom furniture. The Lounge is a great size and shape and has access to a gated outside space which is south facing. The perfect place to spend time relaxing!

The bathroom has a white suite with white tiling. This room could be upgraded with new taps, side bath panel and a modern basin. With a window it is a light space. There is also a separate room next to it, originally the toilet, this space has been utilised with space and plumbing for a washing machine and tumble dryer.

Lastly the kitchen whilst compact has everything required. Integrated oven and hob with space for washing machine, tumble dryer and fridge freezer and a pantry cupboard. This space could be redesigned with a new kitchen to make it a stunning modern room. Outside there are communal grounds and permit parking to the front.

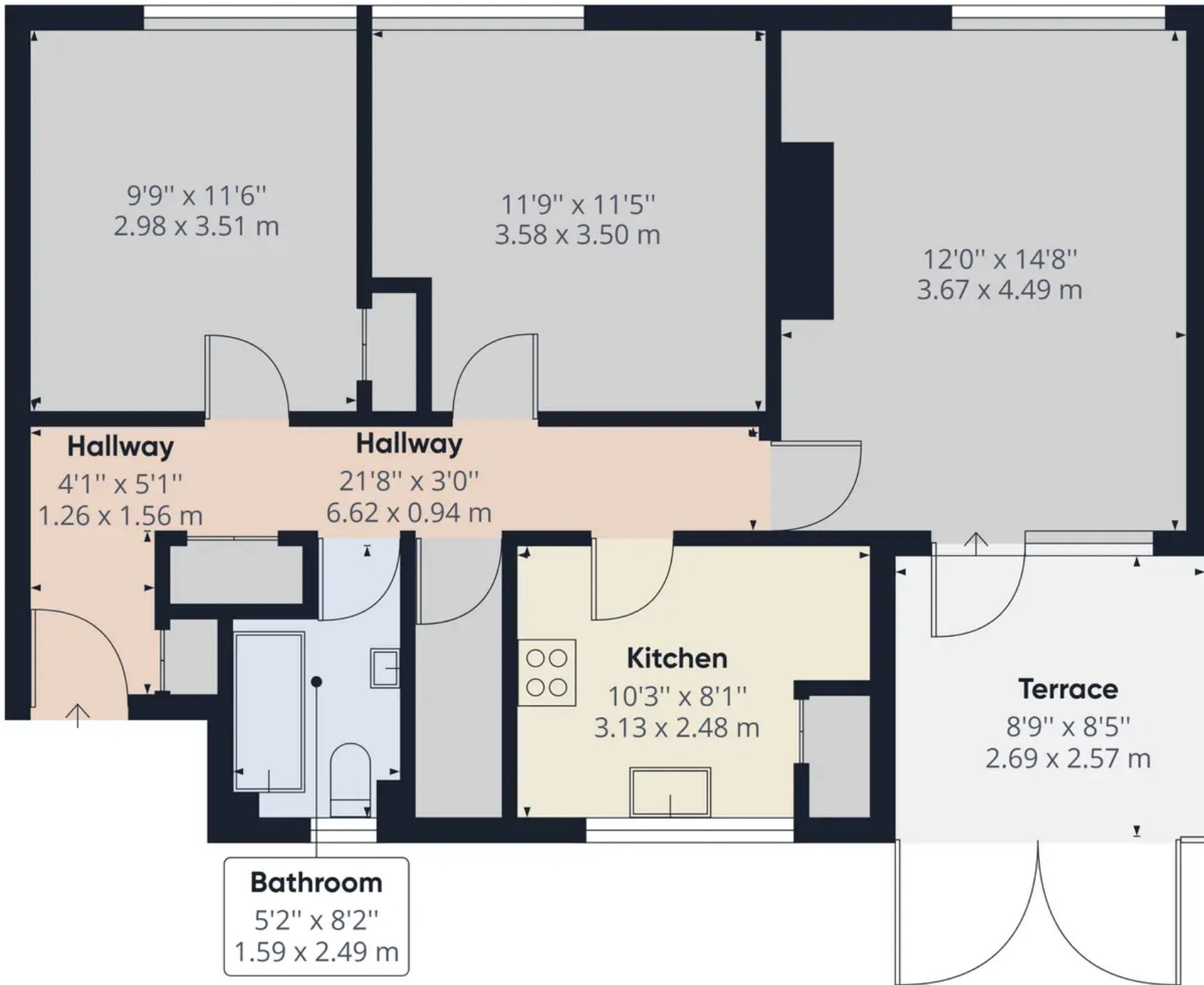
Leasehold remaining - 83 years

Service Charge - Estimated for 2023/2024 is £211.53 pcm including Ground Rent.

Council Tax band: B

Tenure: Leasehold





Approximate total area⁽¹⁾

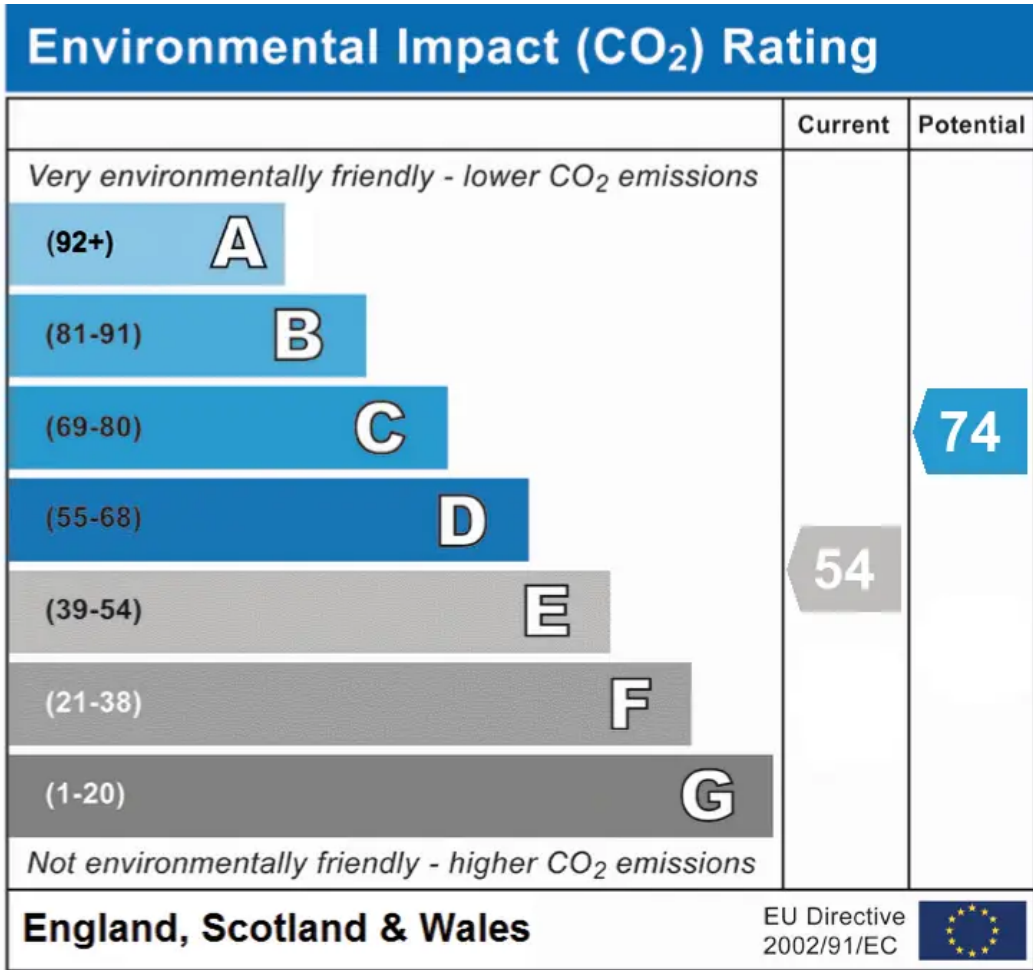
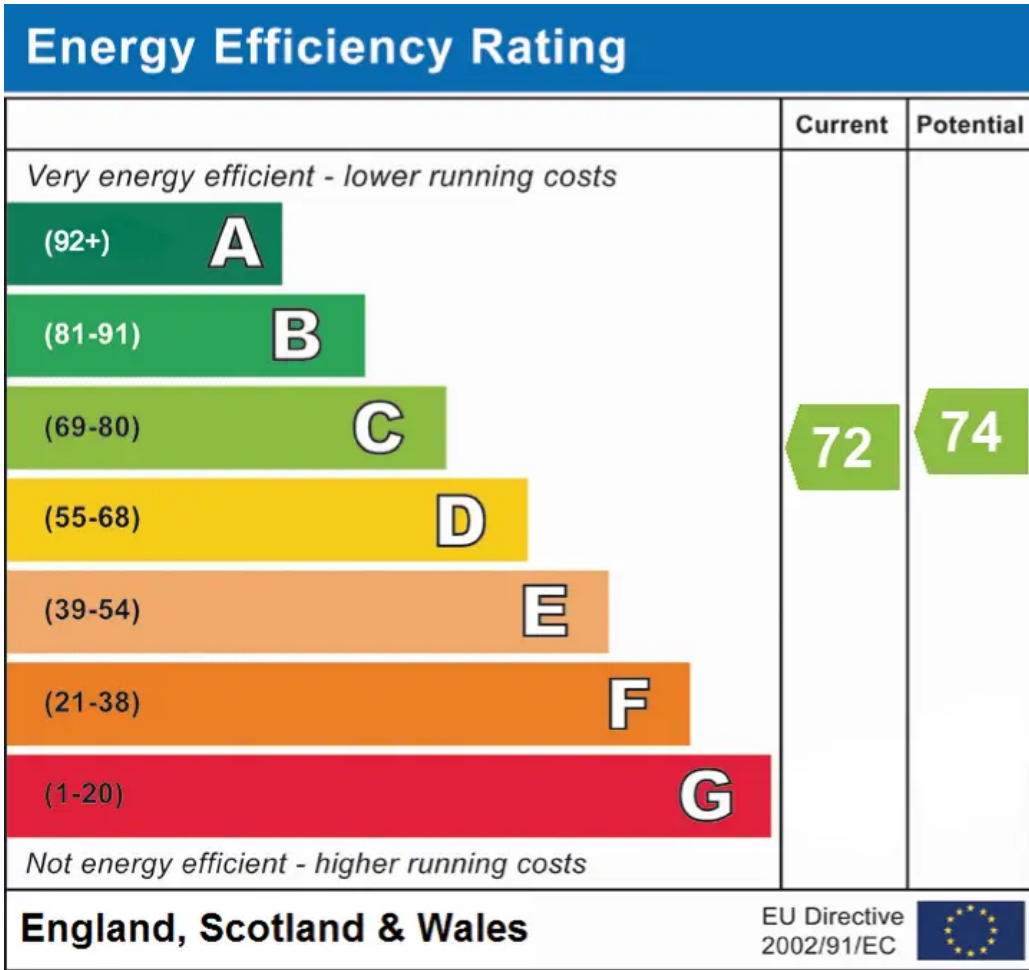
674.90 ft²

62.70 m²

(1) Excluding balconies and terraces

While every attempt has been made to ensure accuracy, all measurements are approximate, not to scale. This floor plan is for illustrative purposes only.

GIRAFFE 360



Chinneck Shaw

Bridge House, Milton Road, Portsmouth – PO3 6AN

023 9282 6731

hello@chinneckshaw.co.uk

www.chinneckshaw.co.uk/

Chinneck Shaw, Bridge House, Milton Road, PO3 6AN Consumer Protection from Unfair Trading Regulations 2008: These details are for guidance only and complete accuracy cannot be guaranteed. If there is any point which is of particular importance, verification should be obtained. The do not constitute a contract or part of a contract. All measurements are approximate. No guarantee can be given with regard to planning permissions or fitness for purpose. No apparatus, equipment, fixture or fitting has been tested. Items shown in the photographs are NOT necessarily included. Interested Parties are advised to check availability and make an appointment to view before travelling to see a property.