

The Chelsea

2 Bedroom semi detached or link
661 sq ft (61 sq m)



Semi or link



1 Double



1 Single



1 Bath

A space to call home

Perfect for first time buyers or a small family, the Chelsea offers 1 double bedroom and 1 single. Features include kitchen with French doors to rear garden, family sized bathroom, walk-in wardrobe to bedroom 1. Available as link or semi.

Beautiful and built to last.



Specification

- Kitchen/dining area with French doors to rear garden
- Downstairs cloakroom
- Oven, hob and extractor fan
- Walk-in wardrobe to bedroom 1
- Family bathroom
- Energy efficient heating system
- NHBC ten year warranty

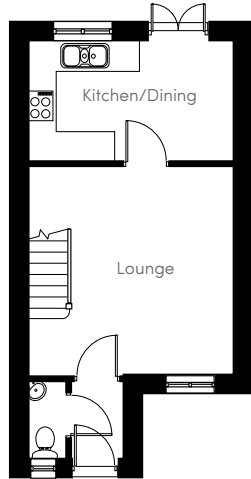
llanmoor-homes.co.uk





THE CHELSEA

Llanmoor Homes

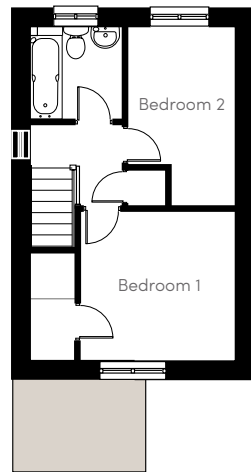


Ground Floor

Lounge
13' 8" (max) x 13' 6"

Cloaks
2' 9" x 5' 3"

Kitchen/Dining
13' 8" x 7' 8"



First Floor

Bedroom 1
10' 4" x 9' 8"

Bathroom
6' 3" x 6' 2"

Bedroom 2
7' 2" x 11' 10" (max)

For current availability
and Sales Office opening
times visit us online

llanmoor-homes.co.uk

Head office **01443 228 413**

llanmoor-homes.co.uk

Follow us    

These particulars are for illustration only. We operate a policy of continuous product development and individual features such as windows, garages and elevational treatment may vary from time to time. Consequently these particulars should be treated as a general guidance only and cannot be relied upon accurately describing any of the Specified Matters prescribed by any Order made under the Property Misdescriptions Act 1991. Nor do they constitute a contract, part of any contract or a warranty.

Llanmoor Development Co. Limited - 63-65 Talbot Road, Talbot Green, Pantyclun, Rhondda Cynon Taff CF72 8AE.

Company Registered in England & Wales. 870710. NHBC Registered No. 08253.

 Virtual Reality tour available for this property on llanmoor-homes.co.uk

