

4 bedroom Victorian house located in central Reigate with off road parking.

Delightful 4 bedroom, 3 bathroom Victorian house located close to Reigate town centre and train station. The property has 2 reception rooms, a fitted kitchen which is open plan onto a lovely breakfast room. On the first floor you will find 2 bedrooms and 2 bathrooms, there is a further bedroom and the impressive master suite on the top floor. Outside there are gardens to the front and rear, the rear garden is laid to lawn and has a timber shed. There is a private parking space to the rear. The property is currently rented out, the photos are prior to the existing tenancy.



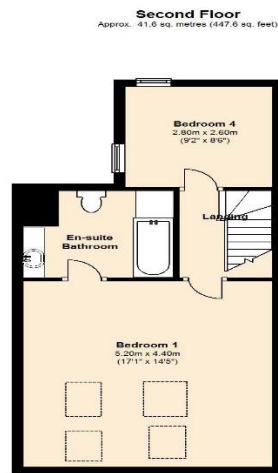
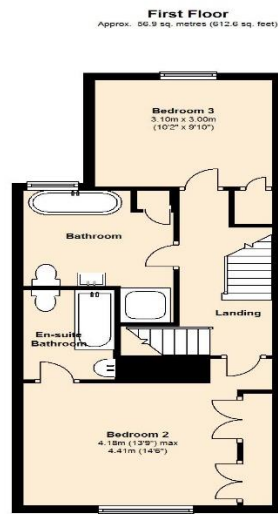
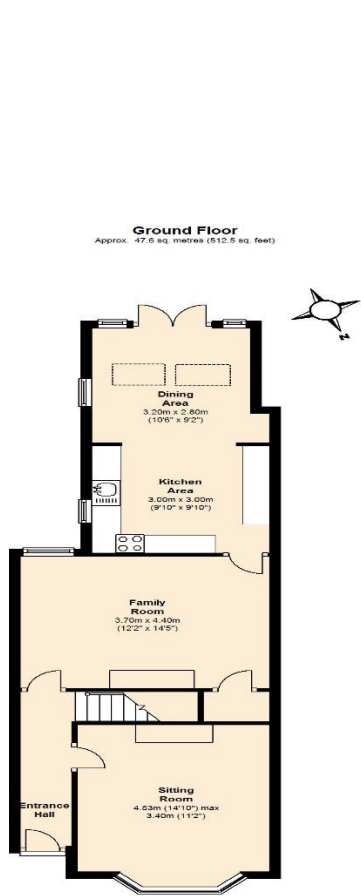
CHAIN FREE

GUIDE PRICE
£825,000

15 York Road, Reigate, Surrey, RH2 9HH



- 4 bedrooms.
- 3 bathrooms.
- 2 reception rooms.
- Fitted kitchen open plan to breakfast room.
- Mature garden with timber shed.
- Gas central heating.
- Walking distance to both Reigate train station and town centre.
- Victorian features throughout.
- Off road parking.
- CHAIN FREE



Total area: approx. 141.5 sq. metres (1523.0 sq. feet)
These drawings are not to scale and are for representational purposes only. Brian Blunden
Plan produced using The Mobile Agent

Council tax band: D

EPC Rating: C



PRS Property Redress Scheme

lewis white

Lewis White Estate Agents Ltd, Somers House, Linkfield Corner, Redhill, RH1 1BB
www.lewiswhite.net info@lewiswhite.net

01737 245779