



♥ 1 Bedroom Ground Floor Apartment Offers Over £110,000

Flat 1 Champion House, Frankel Avenue, Redhouse, Swindon, Wiltshire, SN25 2GY

mcfarlane
property.com

Ground Floor Apartment North Swindon

- POPULAR LOCATION
 - FANTASTIC FIRST TIME BUY / INVESTMENT
 - ALLOCATED PARKING
 - GROUND FLOOR
-

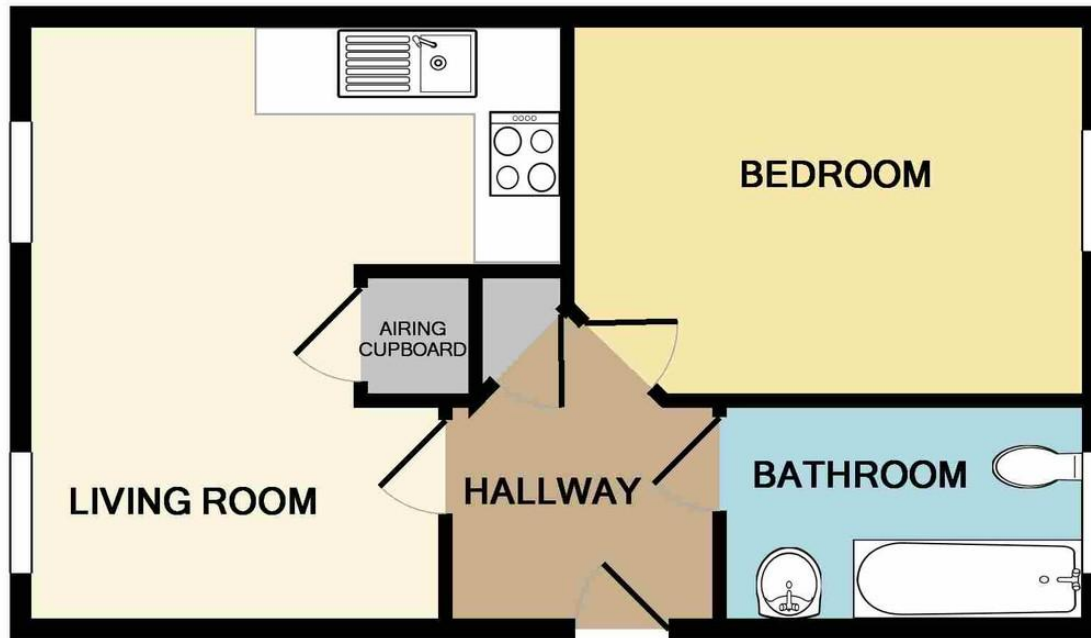
ONE BEDROOM GROUND FLOOR APARTMENT - WELL PRESENTED THROUGHOUT - SEPARATE FITTED KITCHEN - MODERN BATHROOM - ALLOCATED PARKING - INVESTMENT OPPORTUNITY

A ground floor apartment which is located in a sought-after position of Redhouse in North Swindon. The apartment offers well-presented accommodation to include Communal Security Entrance, Apartment Entrance, Lounge, Kitchen,

Outside there is allocated Parking and access to Communal Bike shed. Ideal for first time buyers or investment opportunity. Viewing Essential.



We where you LIVE



Whilst every attempt has been made to ensure the accuracy of the floor plan contained here, measurements of doors, windows, rooms and any other items are approximate and no responsibility is taken for any error, omission, or mis-statement. This plan is for illustrative purposes only and should be used as such by any prospective purchaser. The services, systems and appliances shown have not been tested and no guarantee as to their operability or efficiency can be given
Made with Metropix ©2019

Our team are friendly, experienced and are all local. They know it better than they do their own living rooms and can help you find what you're looking for because **we love where we live.**

We would be delighted to show you around this property.

Because every home needs a personal touch.

If you would like to view this property then please get in touch.

 01793 296600

 swindon@mcfarlaneproperty.com

mcfarlaneproperty.com

mcfarlane
property.com

Cricklade.

102 High Street
Cricklade SN6 6AA

 01793 751044

Marlborough.

106 High Street
Marlborough SN8 1LT

 01672 514380

Old Town.

28-30 Wood Street
Swindon SN1 4AB

 01793 296880

Swindon.

The Village Centre,
Redhouse SN25 2FW

 01793 296600

Agents Note: Whilst every care has been taken to prepare these sales particulars, they are for guidance purposes only. All measurements are approximate are for general guidance purposes only and whilst every care has been taken to ensure their accuracy, they should not be relied upon and potential buyers are advised to recheck the measurements