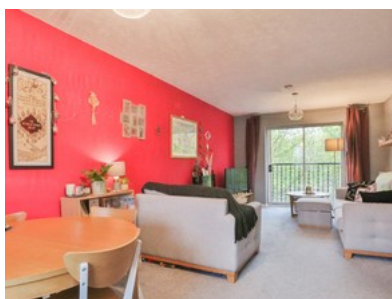


Hartley Bridge

£105,000-£110,000



beercocks
valuing people, not just houses



- ✓ Extremely Well Presented Second Floor Apartment
- ✓ Ideal First Home Or Down Sizer Property
- ✓ Two Bedrooms
- ✓ Allocated Parking
- ✓ Popular Victoria Dock Location Close To City Centre
- ✓ Leasehold
- ✓ Tax Band A
- ✓ Epc D

Bedroom  2 Bathroom  1 Reception  1

Guide Price

£105,000