



Highgate Road, NW5
£920 per week, For long let



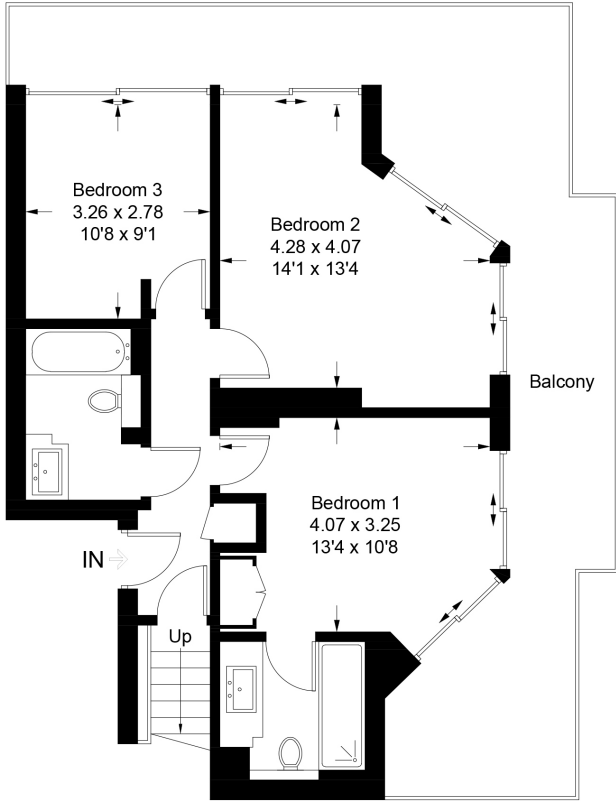
Unbelievable Views! We are delighted to offer this exceptional three double bedroom penthouse apartment arranged over the top two floors of this well maintained building enjoying a superb location close to excellent local schools and transport links



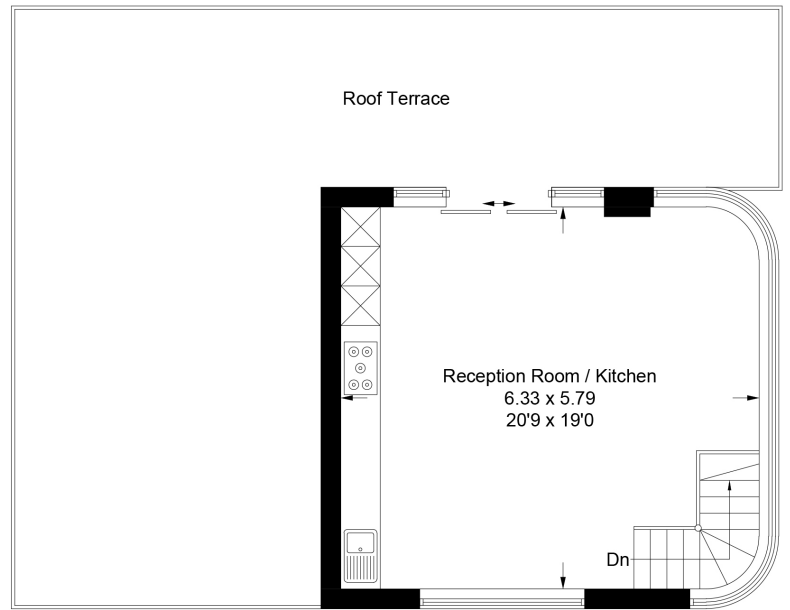


Tally Ho Apartments

Approximate Gross Internal Area = 95.3 sq m / 1026 sq ft



Fourth Floor



Fifth Floor

Illustration for identification purposes only,
measurements are approximate, not to scale.

Salter Rex give notice to anyone reading these particulars that: (i) these particulars do not constitute part of an offer or contract; (ii) these particulars and any pictures or plans represent the opinion of the author and are given in good faith for guidance only and must not be construed as statements of fact; (iii) nothing in the particulars shall be deemed a statement that the property is in good condition otherwise; we have not carried out a structural survey of the property and have not tested the services, appliances or specified fittings.

Long Description

Unbelievable Views! We are delighted to offer this exceptional three double bedroom penthouse apartment with wrap around balcony on the lower floor and a huge roof terrace on the upper floor that enjoys a superb location close to excellent local schools, transport links and the Heath.

Arranged over the top two floors of this well maintained building accommodation briefly comprises: E/hall with storage cupboard, wonderful master bedroom with en-suite and fitted wardrobe, second double bedroom with lovely corner position, third double bedroom and luxury fitted bathroom. All bedrooms have floor to ceiling windows providing access to the wrap around balcony. Upstairs is the fabulous open reception room open plan with a luxurious high end fitted kitchen. This bright space has windows on all sides allowing a wealth of natural light and providing access to the roof terrace which gives unbelievable views over London and Hampstead Heath.

There a range of excellent local schools close by and easy access to the City and West End is provided by the Northern Line and Thameslink at Kentish Town. The open spaces of Hampstead Heath and the excellent leisure options this provides are only a short walk away.

Available Now